



BMA BIOMEDICALS



Peninsula Laboratories

T-5045

Guinea pig anti pTH-related protein (1-34) (human, rat) [UniProt:P12272, P13085]

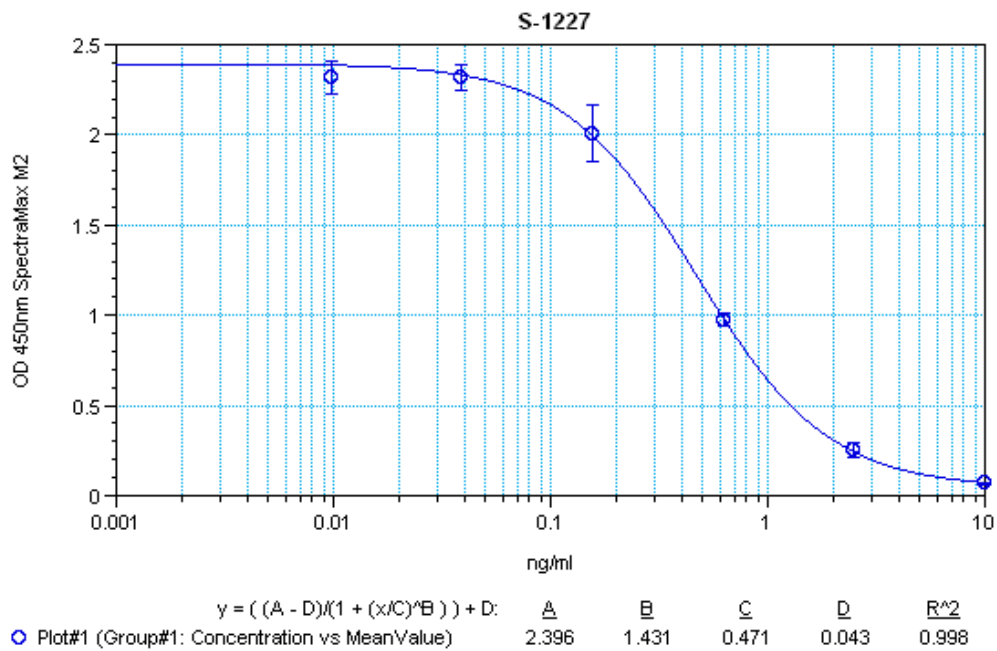
pTH-related protein (1-34), or Parathyroid hormone-related protein, is initially translated as a 177 amino acid protein, which is then cleaved into pTH-related protein (1-34). It contains two helical domains spanning sequence, 13-18 and 20-34, and it is encoded by the pTHLH gene in human. An excessive production of pTH-related protein can cause malignancy-associated hypercalcemia

This antibody was generated by immunization of guinea pigs with pTH-related protein (1-34) coupled to a carrier protein.

TECHNICAL AND ANALYTICAL CHARACTERISTICS

Lot number:	030724-1
Host species:	Guinea pig
Quantity:	50µl
Format:	Neat undiluted antiserum, lyophilized, packaged under nitrogen. Reconstitute by adding 50µl distilled water. This will give the equivalent of undiluted antiserum.
Stability:	Original vial: at least one year at 4° - 8°C from date of delivery. Minimize repeated thawing and freezing of the antiserum by freezing aliquots at -20°C or below.
Applications:	This antibody has been tested and validated in ELISA against pTH-related protein (1-34). Other applications like immunohistochemistry (IHC), FACS or Western Blot may work as well. Optimal dilutions should be determined by the end user. Please see www.bma.ch for protocols and general information.
Immunogen:	Synthetic peptide H-Ala-Val-Ser-Glu-His-Gln-Leu-Leu-His-Asp-Lys-Gly-Lys-Ser-Ile-Gln-Asp-Leu-Arg-Arg-Arg-Phe-Phe-Leu-His-His-Leu-Ile-Ala-Glu-Ile-His-Thr-Ala-OH (Disulfide bond) coupled to carrier protein.

Typical titration curve of pTH-related protein (1-34) in a competitive ELISA with this antibody:



Related Products: T-4511: anti pTH-related protein (34), diluted antiserum (hu, ms, rt)
 S-1227: ELISA, high sensitivity for extracted samples (34)
 T-4513: anti pTH-related protein (34), neat antiserum (hu, ms, rt)
 T-4512: anti pTH-related protein (34), purified IgG (hu, ms, rt)

This product contains no preservative and is intended for laboratory use and research purposes only. Purchase of this product does not include authorization to use it in diagnostic or therapeutic applications.

T-5045

neat antiserum

20.10.2020