



BMA BIOMEDICALS



Peninsula Laboratories

---

## T-4833

### Rabbit anti BAGE-1,-2,-3,-4,-5,-6,-7 (human) [UniProt: Q13072, Q86Y30, Q86Y29, Q86Y28, Q86Y27]

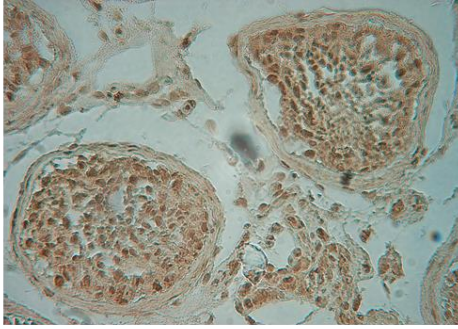
The ancestral BAGE was generated by juxtacentromeric reshuffling of the KMT2C/MLL3 gene. The BAGE family was expanded by juxtacentromeric movement and/or acrocentric exchanges and it is composed of expressed genes that map to the juxtacentromeric regions of chromosomes 13 and 21 as well as of unexpressed gene fragments that scattered in the juxtacentromeric regions of several chromosomes, including chromosomes 9, 13, 18 and 21. BAGE-1 encodes a human tumor antigen recognized by autologous cytolytic T lymphocyte BAGE-2 is an RNA gene and is affiliated with the ncRNA class. Diseases associated with BAGE-2 include Melanoma. BAGE-3,-4,-5,-6 and -7 are Protein Coding genes. Diseases associated with BAGE-3,-4,-5,-6 and -7 include Melanoma.

This antibody was generated by immunization of rabbits with BAGE-1,-2,-3,-4,-5,-6,-7 coupled to a carrier protein.

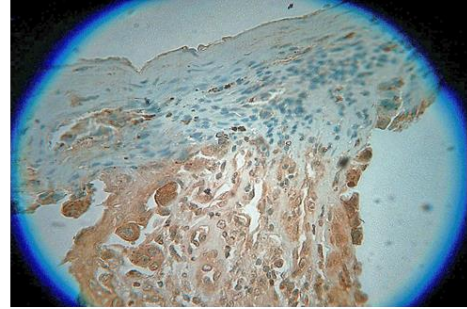
---

## TECHNICAL AND ANALYTICAL CHARACTERISTICS

<b>Lot number:</b>	n/a
<b>Host species:</b>	Rabbit IgG
<b>Quantity:</b>	50µl
<b>Format:</b>	Neat undiluted antiserum, lyophilized, packaged under nitrogen. Reconstitute by adding 50µl distilled water. This will give the equivalent of undiluted antiserum.
<b>Stability:</b>	Original vial: at least one year at 4° - 8°C from date of delivery. Minimize repeated thawing and freezing of the antiserum by freezing aliquots at -20°C or below.
<b>Applications:</b>	This antibody has been tested and validated in ELISA against BAGE-1,-2,-3,-4,-5,-6,-7. Other applications like immunohistochemistry (IHC), FACS or Western Blot may work as well. Optimal dilutions should be determined by the end user. Please see <a href="http://www.bma.ch">www.bma.ch</a> for protocols and general information.
<b>Immunogen:</b>	Synthetic peptide H-Met-Ala-Ala-Gly-Val-Val-Phe-Leu-Ala-Leu-Ser-Ala-Gln-Leu-Leu-Gln-Ala-Arg-Leu-Met-Lys-Glu-Glu-Ser-Pro-Val-Val-coupled to carrier protein.



Tissues used: Normal human adult testis  
Dilution: 1:1000  
Incubation time: 3 hours at 37°C  
Pre-treatment: 0.01M Citrate buffer pH 6.0  
Secondary antibody: poly-HRP



Tissues used: Human skin melanoma  
Dilution: 1:1000  
Incubation time: 3 hours at 37°C  
Pre-treatment: 0.01M Citrate buffer pH 6.0  
Secondary antibody: poly-HRP

Related Products: T-4832: Rabbit anti BAGE-1 CTL – epitope (hu), neat antiserum

---

This product contains no preservative and is intended for laboratory use and research purposes only. Purchase of this product does not include authorization to use it in diagnostic or therapeutic applications.

T-4833

neat antiserum

15.12.2020