



BMA BIOMEDICALS



Peninsula Laboratories

T-4832

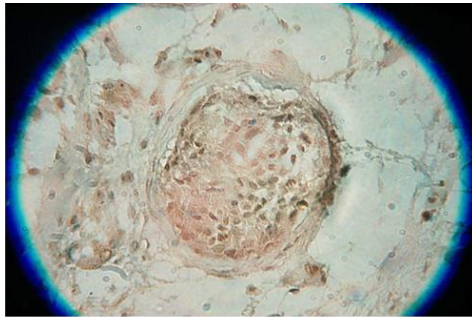
Rabbit anti BAGE-1 CTL-epitope (human) [UniProt: Q13072]

B melanoma antigen 1 (BAGE-1) encodes a human tumor antigen recognized by autologous cytolytic T lymphocyte. The ancestral BAGE was generated by juxtacentromeric reshuffling of the KMT2C/MLL3 gene. The BAGE family was expanded by juxtacentromeric movement and/or acrocentric exchanges and it is composed of expressed genes that map to the juxtacentromeric regions of chromosomes 13 and 21 as well as of unexpressed gene fragments that scattered in the juxtacentromeric regions of several chromosomes, including chromosomes 9, 13, 18 and 21. BAGE-1 CTL-epitope is not expressed in normal tissues, except in testis. It is expressed with significant proportion in melanomas, but also in tumors of various histological origins, such as bladder carcinomas, head and neck squamous cell carcinomas, lung and breast carcinomas.

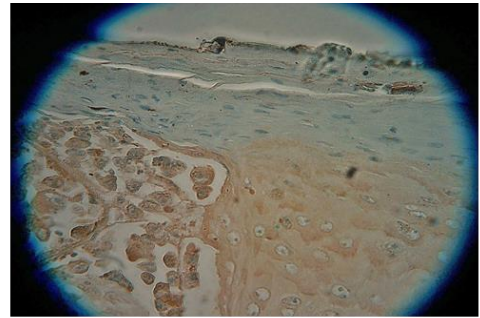
This antibody was generated by immunization of rabbits with BAGE-1 CTL-epitope coupled to a carrier protein.

TECHNICAL AND ANALYTICAL CHARACTERISTICS

Lot number:	n/a
Host species:	Rabbit IgG
Quantity:	50µl
Format:	Neat undiluted antiserum, lyophilized, packaged under nitrogen. Reconstitute by adding 50µl distilled water. This will give the equivalent of undiluted antiserum.
Stability:	Original vial: at least one year at 4° - 8°C from date of delivery. Minimize repeated thawing and freezing of the antiserum by freezing aliquots at -20°C or below.
Applications:	This antibody has been tested and validated in ELISA against BAGE-1 CTL-epitope. Other applications like immunohistochemistry (IHC), FACS or Western Blot may work as well. Optimal dilutions should be determined by the end user. Please see www.bma.ch for protocols and general information.



Tissues used: Normal human adult testis
Dilution: 1:1000
Incubation time: 3 hours at 37°C
Pre-treatment: 0.01M Citrate buffer pH 6.0
Secondary antibody: poly-HRP



Tissues used: Human skin melanoma
Dilution: 1:1000
Incubation time: 3 hours at 37°C
Pre-treatment: 0.01M Citrate buffer pH 6.0
Secondary antibody: poly-HRP

Related Products: T-4833: Rabbit anti BAGE-1,-2,-3,-4,-5,-6,-7 (hu), neat antiserum

This product contains no preservative and is intended for laboratory use and research purposes only. Purchase of this product does not include authorization to use it in diagnostic or therapeutic applications.

T-4832

neat serum

1.3.2021