



BMA BIOMEDICALS

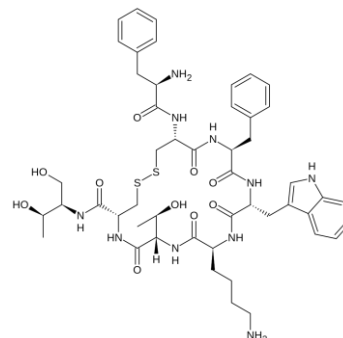


Peninsula Laboratories

T-4590 Rabbit anti Octreotide

Octreotide (brand name **Sandostatin**, among others) is an octapeptide that mimics natural somatostatin pharmacologically, though it is a more potent inhibitor of growth hormone, glucagon, and insulin than the natural hormone [Wikipedia]. Somatostatin (STT) analogs are important active pharmaceutical ingredients for the treatment of various tumors, and endocrine and digestive diseases. STT is one of the main inhibitors of endocrine and exocrine hormone secretion in humans.

This antibody was generated by immunization of rabbits with Octreotide coupled to a carrier protein.



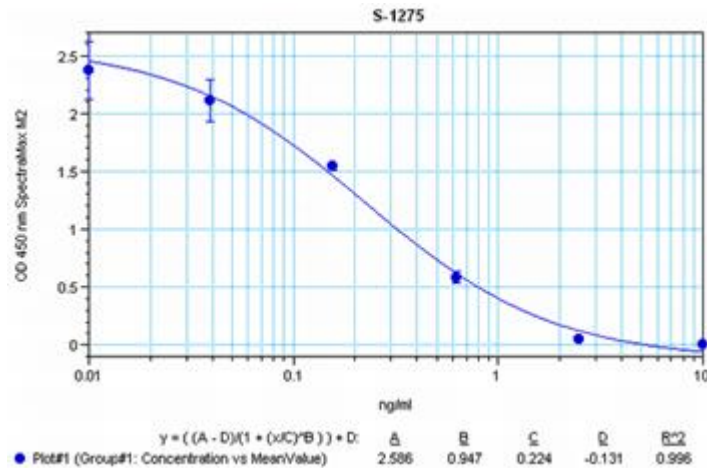
TECHNICAL AND ANALYTICAL CHARACTERISTICS

- Lot number:** A15789
- Host species:** Rabbit IgG
- Quantity:** 500µl
- Format:** Diluted antiserum, lyophilized, packaged under nitrogen. Reconstitute by adding 50ml RIA buffer. This will give enough diluted antiserum for 500 RIA tubes. Upon reconstitution to 50ml total volume, the solution contains 0.1M sodium phosphate buffer pH 7.4, 0.05M NaCl, 0.1% BSA, 0.01% NaN₃, and 0.1% Triton X-100. Store at 4°C.
- Stability:** Original vial: at least one year at 4° - 8°C from date of delivery. After reconstitution with RIA buffer, store solution at 4° - 8°C for up to one month.
- Applications:** This antibody has been tested and validated in ELISA and RIA against Octreotide. Other applications like immunohistochemistry (IHC), FACS or Western Blot may work as well. Optimal dilutions should be determined by the end user. Please see www.bma.ch for protocols and general information.
- Immunogen:** Synthetic peptide H-D-Phe-Cys-Phe-D-Trp-Lys-Thr-Cys-L-threoninol (disulfide bond) coupled to carrier protein.

Cross Reactivity:

Peptide:	%:
Octreotide	100
Somatostatin-14	0
Somatostatin-28	0
Somatostatin Analog, RC-160	0
Somatostatin Analog, (CTOP)	0

Typical titration curve of Octreotide in a competitive ELISA with this antibody:



Related Products:

- T-4582: neat antiserum
- T-4874: purified IgG
- S-1275: ELISA, high sensitivity for extracted samples
- S-1341: ELISA, extraction-free for human samples
- S-1342: ELISA, extraction-free for rat samples

This product contains sodium azide as a preservative and is intended for laboratory use and research purposes only. Purchase of this product does not include authorization to use it in diagnostic or therapeutic applications.

T-4590

diluted antiserum

19.5.2020