



BMA BIOMEDICALS



Peninsula Laboratories

---

## T-4563

### Rabbit anti (Arg<sup>8</sup>)-Vasopressin

(Arg<sup>8</sup>)-Vasopressin or argipressin is an antidiuretic peptide hormone that plays a key role in maintaining plasma osmolality. The peptide released from the posterior pituitary gland promotes renal tubular reabsorption of water. In high concentration, it also raises blood pressure by inducing moderate vasoconstriction. Argipressin is involved in the control of circadian rhythm, thermoregulation, and ACTH release in the brain.

This antibody was generated by immunization of rabbits with (Arg<sup>8</sup>)-Vasopressin coupled to a carrier protein.

---

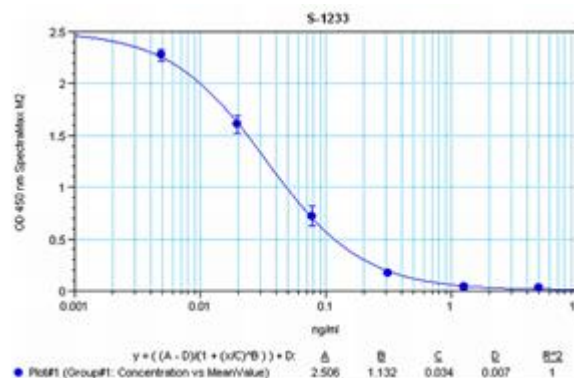
#### TECHNICAL AND ANALYTICAL CHARACTERISTICS

<b>Lot number:</b>	A15684
<b>Host species:</b>	Rabbit IgG
<b>Quantity:</b>	50µl
<b>Format:</b>	Neat undiluted antiserum, lyophilized, packaged under nitrogen. Reconstitute by adding 50µl distilled water. This will give the equivalent of undiluted antiserum; does not contain any preservative.
<b>Stability:</b>	Original vial: at least one year at 4° - 8°C from date of delivery. Minimize repeated thawing and freezing of the stock solution by freezing aliquots of the stock solution at -20°C or below.
<b>Applications:</b>	This antibody has been tested and validated in ELISA against (Arg <sup>8</sup> )-Vasopressin. Other applications like immunohistochemistry (IHC), FACS or Western Blot may work as well. Optimal dilutions should be determined by the end user. Please see <a href="http://www.bma.ch">www.bma.ch</a> for protocols and general information.
<b>Immunogen:</b>	Synthetic peptide H-Cys-Tyr-Phe-Gln-Asn-Cys-Pro-Arg-Gly-NH <sub>2</sub> , (disulfide bond) coupled to carrier protein.

## Cross-Reactivity:

Peptide:	%:
[Arg <sup>8</sup> ]-Vasopressin	100
[[D(CH <sub>2</sub> ) <sub>5</sub> <sup>1</sup> , D-Ile <sup>2</sup> , Ile <sup>4</sup> , Arg <sup>8</sup> ]-Vasopressin	100
[Arg <sup>8</sup> ]-Vasotocin	100
[Lys <sup>8</sup> ]-Vasopressin	38
[Desamino-Cys <sup>1</sup> , D-Arg <sup>8</sup> ]-Vasopressin	0.8
Vasopressin	0
Pressinoic Acid	0
ANF (1-28) (human)	0
Oxytocin	0
ACTH (1-39) (human)	0
LHRH	0
Met-Enkephalin	0
PACAP 38 (human, mouse, ovine, porcine, rat)	0
PACAP 27 (human, mouse, ovine, porcine, rat)	0

Typical titration curve of (Arg8)-Vasopressin in a competitive ELISA with this antibody:



Related Products:

- T-4562: purified IgG
- T-5048: neat antiserum, host: guinea pig
- S-1233: ELISA, high sensitivity for extracted samples
- S-1357: ELISA, extraction-free for human samples
- S-1358: ELISA, extraction-free for rat samples

This product contains no preservative and is intended for laboratory use and research purposes only. Purchase of this product does not include authorization to use it in diagnostic or therapeutic applications.

T-4563

neat antiserum

26.5.2020