



BMA BIOMEDICALS



Peninsula Laboratories

T-4145

Rabbit anti Amylin (mouse, rat) [UniProt: P12968]

Amylin (also known as islet amyloid polypeptide (IAPP)) is a 37 amino acid peptide hormone with a disulfide bridge between Cys² and Cys⁷. Both the amidated C-terminus and the disulfide bridge are necessary for the full biological activity of Amylin. It is co-secreted with insulin from the pancreatic β -cells and plays an important role in the glycemic control, regulating it by slowing gastric emptying and promoting satiety. It is also involved in bone metabolism, along with the related peptides calcitonin and calcitonin gene related peptide.

This antibody was generated by immunization of rabbits with Amylin coupled to a carrier protein.

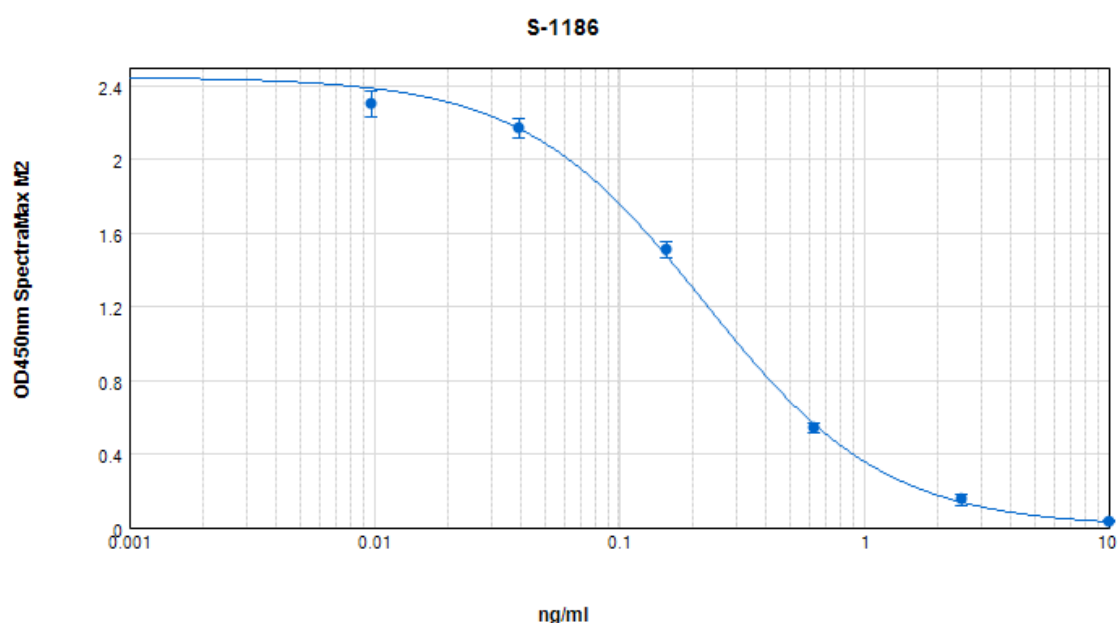
TECHNICAL AND ANALYTICAL CHARACTERISTICS

Lot number:	A17721
Host species:	Rabbit IgG
Quantity:	400 μ g
Format:	Protein A affinity purified from antiserum, lyophilized, packaged under nitrogen. Reconstitute by adding 0.2ml distilled water. This stock solution contains 2mg/ml IgG, phosphate buffered saline pH 7.4 (PBS), and 0.02% (w/v) Thimerosal as a preservative.
Stability:	Original vial: at least one year at 4° - 8°C from date of delivery. Minimize repeated thawing and freezing of the antiserum by freezing aliquots at -20°C or below.
Applications:	This antibody has been tested and validated in ELISA against Amylin. Other applications like immunohistochemistry (IHC), FACS or Western Blot may work as well. Optimal dilutions should be determined by the end user. Please see www.bma.ch for protocols and general information.
Immunogen:	Synthetic peptide H-Lys-Cys-Asn-Thr-Ala-Thr-Cys-Ala-Thr-Gln-Arg-Leu-Ala-Asn-Phe-Leu-Val-Arg-Ser-Ser-Asn-Asn-Leu-Gly-Pro-Val-Leu-Pro-Pro-Thr-Asn-Val-Gly-Ser-Asn-Thr-Tyr-NH ₂ , (Disulfide bond) coupled to carrier protein.

Cross-Reactivity:

PEPTIDE:	%:
Amylin (25-37)	100
Amylin (human)	100
Amylin (rat)	100
Amylin (free acid) (human)	0.35
Amylin (1-13) (human)	0
Amylin (14-24) (human)	0
α -CGRP (human)	0
Glucagon (1-29) (human, bovine, porcine)	0

Typical titration curve of mouse / rat Amylin in a competitive ELISA with this antibody:



Related Products: S-1186: ELISA, high sensitivity for extracted samples (ms, rt)
S-1187: ELISA, high sensitivity for extracted samples (human)
S-1420: ELISA, extraction-free for human serum and plasma samples
T-4146: neat antiserum (ms, rt)

This product contains Thimerosal as a preservative and is intended for laboratory use and research purposes only. Purchase of this product does not include authorization to use it in diagnostic or therapeutic applications.

T-4145

rabbit IgG – ms, rt

25.6.2020