



BMA BIOMEDICALS



Peninsula Laboratories

T-4142

Rabbit anti Amylin (cat) [UniProt: P12967]

Amylin (also known as islet amyloid polypeptide (IAPP)) is a 37-amino acid peptide hormone with a disulfide bridge between cysteine residue 2 and 7. Both the amidated C-terminus and the disulfide bridge are necessary for the full biological activity of Amylin. It is co-secreted with insulin from the pancreatic β -cells and plays an important role in the glycemic control, regulating it by slowing gastric emptying and promoting satiety. It is also involved in bone metabolism, along with the related peptides calcitonin and calcitonin gene related peptide

This antibody was generated by immunization of rabbits with Amylin coupled to a carrier protein.

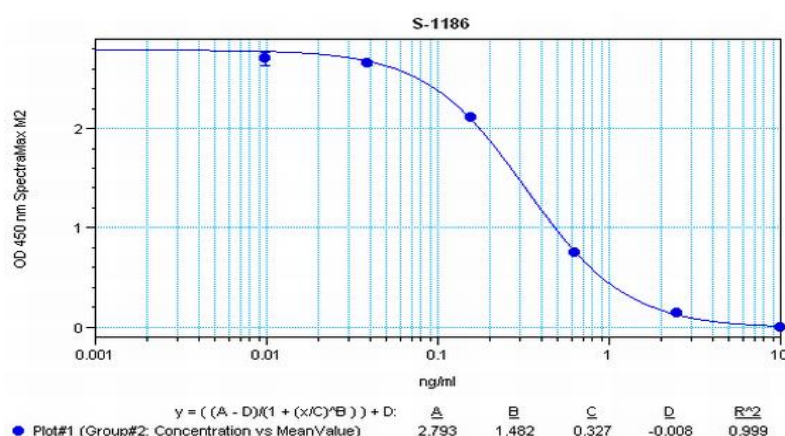
TECHNICAL AND ANALYTICAL CHARACTERISTICS

| | |
|----------------------|---|
| Lot number: | A14727 |
| Host species: | Rabbit IgG |
| Quantity: | 50 μ l |
| Format: | Neat undiluted antiserum, lyophilized, packaged under nitrogen. Reconstitute by adding 50 μ l distilled water. This will give the equivalent of undiluted antiserum. |
| Stability: | Original vial: at least one year at 4 $^{\circ}$ - 8 $^{\circ}$ C from date of delivery. Minimize repeated thawing and freezing of the antiserum by freezing aliquots at -20 $^{\circ}$ C or below. |
| Applications: | This antibody has been tested and validated in ELISA against Amylin. Other applications like immunohistochemistry (IHC), FACS or Western Blot may work as well. Optimal dilutions should be determined by the end user. Please see www.bma.ch for protocols and general information. |
| Immunogen: | Synthetic peptide H-Lys-Cys-Asn-Thr-Ala-Thr-Cys-Ala-Thr-Gln-Arg-Leu-Ala-Asn-Phe-Leu-Val-Arg-Ser-Ser-Asn-Asn-Leu-Gly-Pro-Val-Leu-Pro-Pro-Thr-Asn-Val-Gly-Ser-Asn-Thr-Tyr-NH ₂ , (Disulfide bond) coupled to carrier protein. |

Cross-Reactivity:

| PEPTIDE: | %: |
|--|-------|
| Amylin (mouse, rat) | 100 |
| Amylin (feline) | 100 |
| Amylin (human) | 10 |
| Amylin (free acid) (human) | 0 |
| Insulin (human) | 0 |
| Proinsulin | 0 |
| Glucagon (1-29) (human, bovine, porcine) | 0 |
| Somatostatin-28 | 0 |
| Pancreatic Polypeptide (human) | 0 |
| VIP (human, bovine, rat, porcine) | 0 |
| NPY (porcine) | 0 |
| α -CGRP (human) | <0.01 |
| α -CGRP (rat) | <0.01 |
| β -CGRP (human) | <0.01 |
| β -CGRP (rat) | <0.01 |

Typical titration curve of Amylin in a competitive ELISA with this antibody:



Related Products: S-1186: ELISA, high sensitivity for extracted samples (ms, rt)
 S-1413: ELISA, extraction-free for rat serum and plasma samples
 T-4141: anti Amylin (cat), purified IgG, host: rabbit
 T-4144: anti Amylin (ms, rt), diluted antiserum, host: rabbit
 T-4140: anti Amylin (cat), diluted antiserum, host: rabbit

This product contains no preservative and is intended for laboratory use and research purposes only. Purchase of this product does not include authorization to use it in diagnostic or therapeutic applications.

T-4142

neat antiserum – cat

8.9.2020