



BMA BIOMEDICALS



Peninsula Laboratories

T- 4122

Rabbit anti Adrenocorticotrophic Hormone (1-24)

Adrenocorticotrophic Hormone (ACTH) (1-24) (also known as Tetracosactide or Cosyntropin) is a synthetic peptide that is identical to the 24-amino acid segment at the N-terminal of adrenocorticotrophic hormone. ACTH (1-24) contains the biological activity that stimulates the production of corticosteroids in the adrenal cortex. It exhibits the same activity as natural ACTH with regard to all its biological activities.

This antibody was generated by immunization of rabbits with Adrenocorticotrophic Hormone (1-24) coupled to a carrier protein.

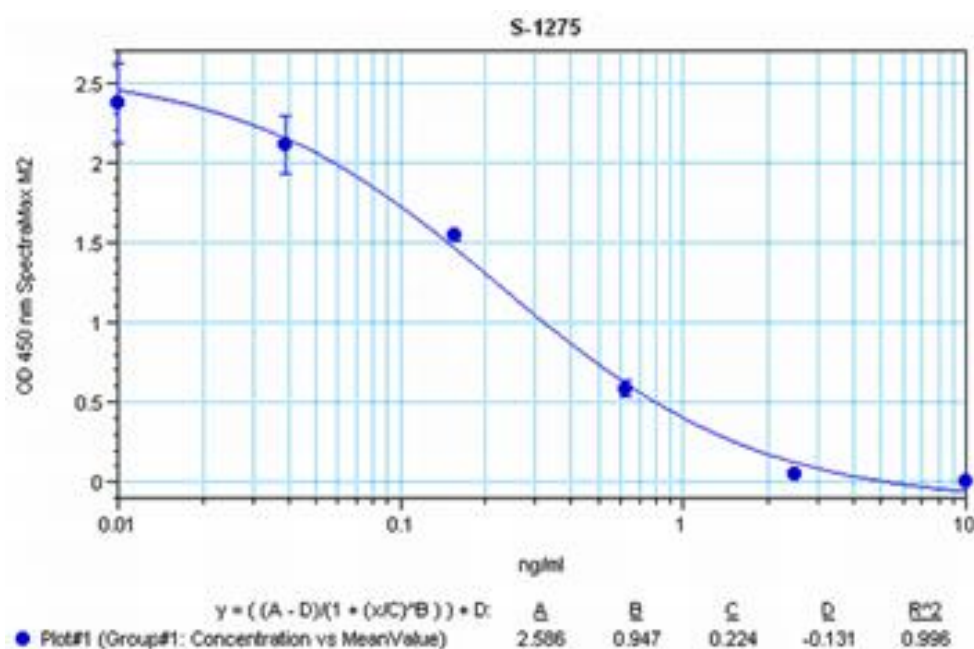
TECHNICAL AND ANALYTICAL CHARACTERISTICS

Lot number:	A22631
Host species:	Rabbit IgG
Quantity:	400µg
Format:	Protein A affinity purified from antiserum, lyophilized, packaged under nitrogen. Reconstitute by adding 0.2ml distilled water. This stock solution contains 2mg/ml IgG, phosphate buffer saline pH 7.4 (PBS), and 0.02% (w/v) Thimerosal as a preservative.
Stability:	Original vial: at least one year at 4° - 8°C from date of delivery. Minimize repeated thawing and freezing of the antiserum by freezing aliquots at -20°C or below.
Applications:	This antibody has been tested and validated in ELISA against Adrenocorticotrophic Hormone (1-24). Other applications like immunohistochemistry (IHC), FACS or Western Blot may work as well. Optical dilutions should be determined by the end user. Please see www.bma.ch for protocols and general information.
Immunogen:	Synthetic peptide H-Ser-Tyr-Ser-Met-Glu-His-Phe-Arg-Trp-Gly-Lys-Pro-Val-Gly-Lys-Lys-Arg-Arg-Pro-Val-Lys-Val-Tyr-Pro-Asn-Val-Ala-Glu-Asn-Glu-Ser-Ala-Glu-Ala-Phe-Pro-Leu-Glu-Phe-OH (Disulfide bond) coupled to carrier protein.

Cross Reactivity:

Peptide:	%:
ACTH (1-39) (mouse, rat)	100
ACTH (1-39) (human)	100
ACTH (1-24) (human)	100
ACTH (7-38) (human)	31.2
ACTH (18-39) (human)	0
α -MSH	0
LH-RH	0
PACAP-38 (human, mouse, ovine, porcine, rat)	0
β -Endorphin (rat)	0

Typical titration curve of Adrenocorticotrophic Hormone (1-24) in a competitive ELISA with this antibody:



Related Products:

- T-4119: neat antiserum
- S-1130: ELISA, high sensitivity for extracted samples
- S-1184: ELISA, high sensitivity for extracted samples
- S-1376: ELISA, extraction-free for human samples

This product contains Thimerosal as a preservative and is intended for laboratory use and research purposes only. Purchase of this product does not include authorization to use it in diagnostic or therapeutic applications.

T-4122

rabbit IgG

25.5.2020