



BMA BIOMEDICALS



Peninsula Laboratories

---

## T-4094

### Rabbit anti Peptide YY (canine, mouse, porcine, rat) [Uniprot: P68004, Q9EPS2, P68005, P10631]

Peptide YY, also known as peptide tyrosine tyrosine, is a 36-amino acid peptide related to the pancreatic peptide family, by having 18 of its 36 amino acids located in the same positions as pancreatic peptide. The two major forms of peptide YY are PYY<sub>1-36</sub> and PYY<sub>3-36</sub>, which have PP fold structural motifs. It is released from cells in the ileum and colon in response to feeding and exerts its action through NPY receptors. It is shown to reduce appetite and may suppress pancreatic secretion.

This antibody was generated by immunization of rabbits with Peptide YY coupled to a carrier protein.

---

#### TECHNICAL AND ANALYTICAL CHARACTERISTICS

<b>Lot number:</b>	A16474
<b>Host species:</b>	Rabbit IgG
<b>Quantity:</b>	50µl
<b>Format:</b>	Neat undiluted antiserum, lyophilized, packaged under nitrogen. Reconstitute by adding 50µl distilled water. This will give the equivalent of undiluted antiserum.
<b>Stability:</b>	Original vial: at least one year at 4° - 8°C from date of delivery. Minimize repeated thawing and freezing of the antiserum by freezing aliquots at -20°C or below.
<b>Applications:</b>	This antibody has been tested and validated in ELISA against Peptide YY. Other applications like immunohistochemistry (IHC), FACS or Western Blot may work as well. Optimal dilutions should be determined by the end user. Please see <a href="http://www.bma.ch">www.bma.ch</a> for protocols and general information.
<b>Immunogen:</b>	Synthetic peptide H-Tyr-Pro-Ala-Lys-Pro-Glu-Ala-Pro-Gly-Glu-Asp-Ala-Ser-Pro-Glu-Glu-Leu-Ser-Arg-Tyr-Tyr-Ala-Ser-Leu-Arg-His-Tyr-Leu-Asn-Leu-Val-Thr-Arg-Gln-Arg-Tyr-NH <sub>2</sub> coupled to a carrier protein.

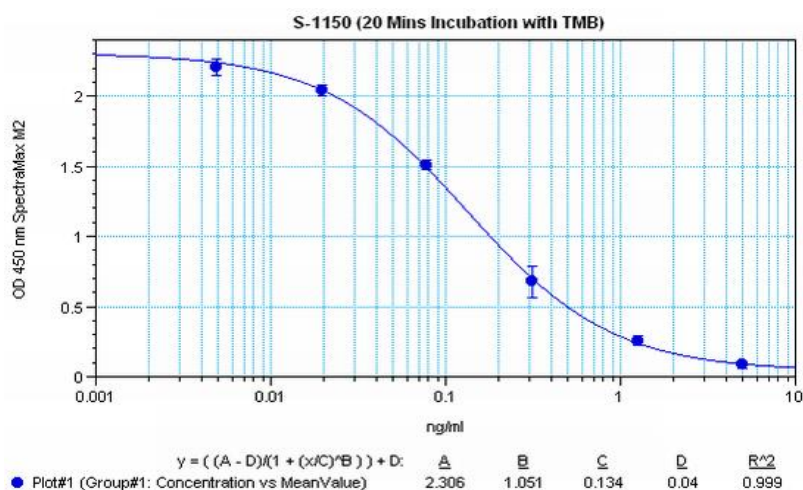
#### Cross-Reactivity:

PEPTIDE:	%:
PYY (canine, mouse, porcine, rat)	100
PYY (13-36) (canine, mouse, porcine, rat)	100
PYY (human)	9
PYY (3-36) (human)	7

## Cross-Reactivity (continued):

PEPTIDE:	%:
NPY (human, rat)	0.1
Pancreatic Polypeptide (human)	0.01
Pancreatic Polypeptide (avian)	0
Met-Enkephalin	0
Galanin (human)	0
Glucagon (1-29) (human, bovine, porcine)	0
Secretin (porcine)	0
Substance P	0
VIP (human, bovine, porcine, rat)	0

Typical titration curve of Peptide YY in a competitive ELISA with this antibody:



### Related Products:

- T-4092: anti Peptide YY, diluted antiserum (ca, ms, po, rt)
- T-4093: anti Peptide YY, purified IgG (ca, ms, po, rt)
- S-1274: ELISA, extraction-free for serum and plasma samples
- S-1150: ELISA, ELISA, high sensitivity for extracted samples

---

This product contains no preservative and is intended for laboratory use and research purposes only. Purchase of this product does not include authorization to use it in diagnostic or therapeutic applications.

T-4094

neat antiserum

20.10.2020