



BMA BIOMEDICALS



Peninsula Laboratories

T-4088

Rabbit anti human Pancreatic Polypeptide [UniProt: P01298]

Pancreatic Polypeptide (PP) is a 36 amino acid anorexigenic peptide hormone secreted by the PP cells in the endocrine pancreas. The function of Pancreatic Polypeptide is to self-regulate pancreatic secretion activities such as endocrine and exocrine. It also has effects on hepatic glycogen levels and gastrointestinal secretions. Secretion of Pancreatic Polypeptide can be accomplished through electrical stimulation of the vagus nerve. Pancreatic Polypeptide is related to Peptide YY and Neuropeptide Y (NPY).

This antibody was generated by immunization of rabbits with Pancreatic Polypeptide coupled to a carrier protein.

TECHNICAL AND ANALYTICAL CHARACTERISTICS

Lot number:	A16206
Host species:	Rabbit IgG
Quantity:	50µl
Format:	Neat undiluted antiserum, lyophilized, packaged under nitrogen. Reconstitute by adding 50µl distilled water. This will give the equivalent of undiluted antiserum.
Stability:	Original vial: at least one year at 4° - 8°C from date of delivery. Minimize repeated thawing and freezing of the antiserum by freezing aliquots at -20°C or below.
Applications:	This antibody has been tested and validated in ELISA against Pancreatic Polypeptide. Other applications like immunohistochemistry (IHC), FACS or Western Blot may work as well. Optimal dilutions should be determined by the end user. Please see www.bma.ch for protocols and general information.
Immunogen:	Synthetic peptide H-Ala-Pro-Leu-Glu-Pro-Val-Tyr-Pro-Gly-Asp-Asn-Ala-Thr-Pro-Glu-Gln-Met-Ala-Gln-Tyr-Ala-Ala-Asp-Leu-Arg-Arg-Tyr-Ile-Asn-Met-Leu-Thr-Arg-Pro-Arg-Tyr-NH ₂ coupled to carrier protein.

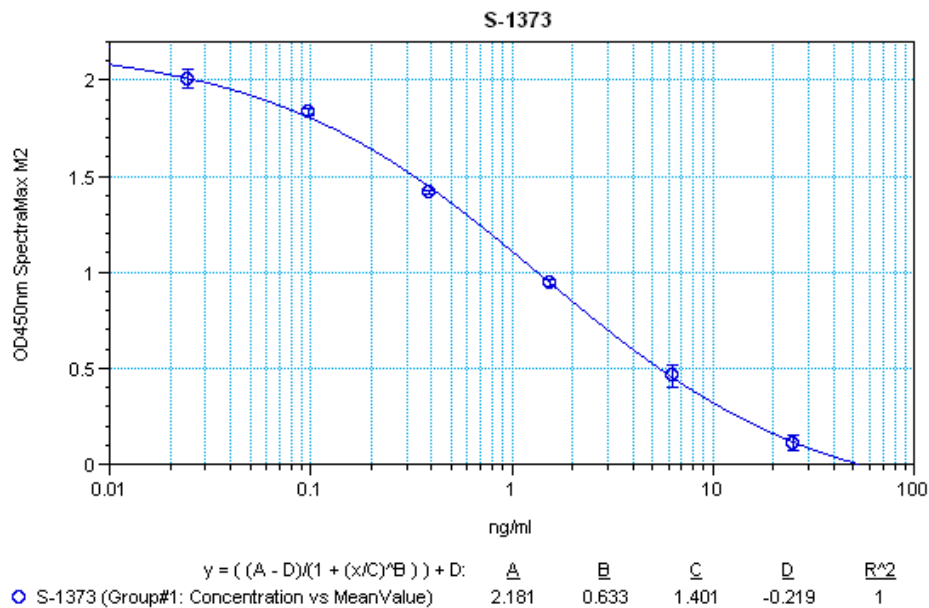
Cross-Reactivity:

PEPTIDE:	%:
Pancreatic Polypeptide (human)	100
Pancreatic Polypeptide (rat)	100
Pancreatic Polypeptide (avian)	0

Cross-Reactivity (continued):

PEPTIDE:	%:
Pancreatic Polypeptide (salmon)	0
Amylin (free acid) (rat)	0
Amylin (human)	0
α -CGRP (human)	0
Glucagon (1-29) (human, bovine, porcine)	0
Insulin (human)	0
NPY (human, rat)	0
PYY (human)	0

Typical titration curve of anti human Pancreatic Polypeptide in a competitive ELISA with this antibody:



Related Products:

- S-1177: ELISA (human), high sensitivity for extracted samples
- S-1373: ELISA (human), extraction-free for human samples
- T-4086: diluted rabbit anti human Pancreatic Polypeptide antiserum
- T-4087: purified rabbit IgG anti human Pancreatic Polypeptide
- T-4488: anti avian Pancreatic Polypeptide, purified rabbit IgG
- T-4489: anti avian Pancreatic Polypeptide, neat rabbit antiserum

This product contains no preservative and is intended for laboratory use and research purposes only. Purchase of this product does not include authorization to use it in diagnostic or therapeutic applications.

T-4088

neat antiserum

17.8.2020