



BMA BIOMEDICALS



Peninsula Laboratories

T-4023

Rabbit anti human BNP-32 [UniProt: P16860]

The natriuretic peptide family consists of three biologically active peptides: atrial natriuretic peptide (ANP), brain (or B-type) natriuretic peptide (BNP), and C-type natriuretic peptide (CNP). Among these, ANP and BNP are secreted by the heart and act as cardiac hormones. Both ANP and BNP preferentially bind to natriuretic peptide receptor-A (NPR-A) and exert similar effects. Expression and secretion of ANP and BNP are stimulated by various factors and are regulated via multiple signaling pathways. The human BNP precursor proBNP is proteolytically processed to BNP₁₋₃₂ and N-terminal proBNP (NT-proBNP) within ventricular myocytes. Uncleaved proBNP as well as mature BNP₁₋₃₂ and NT-proBNP is secreted from the heart, and its secretion is increased in patients with heart failure.

This antibody was generated by immunization of rabbits with BNP-32 coupled to a carrier protein.

TECHNICAL AND ANALYTICAL CHARACTERISTICS

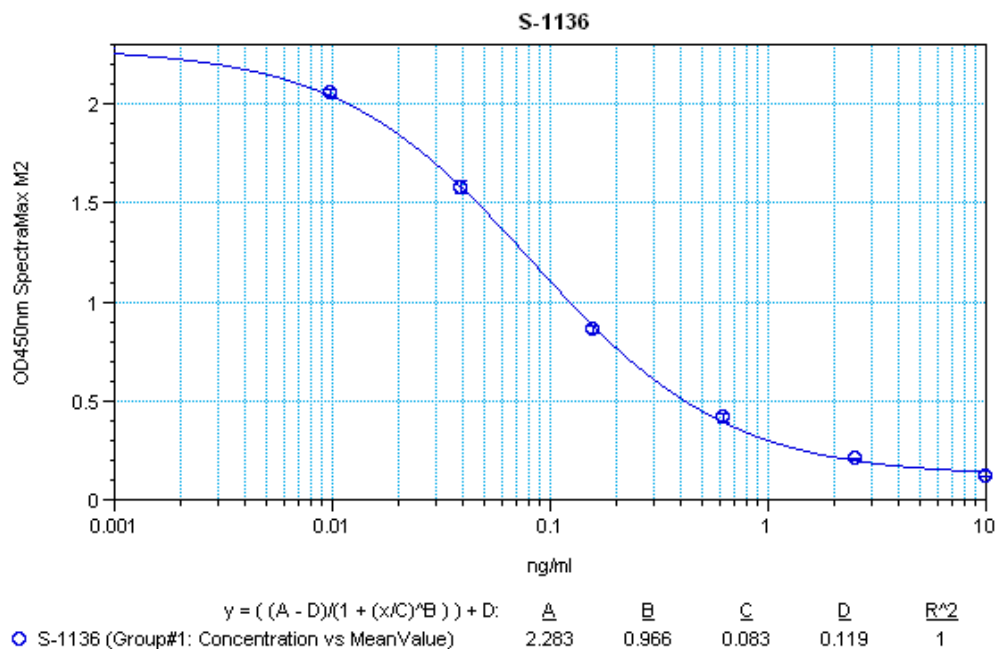
Lot number:	061541
Host species:	Rabbit IgG
Quantity:	50µl
Format:	Neat undiluted antiserum, lyophilized, packaged under nitrogen. Reconstitute by adding 50µl distilled water. This will give the equivalent of undiluted antiserum; does not contain any preservative.
Stability:	Original vial: at least one year at 4° - 8°C from date of delivery. Minimize repeated thawing and freezing of the antiserum by freezing aliquots at -20°C or below.
Applications:	This antibody has been tested and validated in ELISA against human BNP-32. Other applications like immunohistochemistry (IHC), FACS or Western Blot may work as well. Optimal dilutions should be determined by the end user. Please see www.bma.ch for protocols and general information.
Immunogen:	Synthetic peptide H-Ser-Pro-Lys-Met-Val-Gln-Gly-Ser-Gly-Cys-Phe-Gly-Arg-Lys-Met-Asp-Arg-Ile-Ser-Ser-Ser-Ser-Gly-Leu-Gly-Cys-Lys-Val-Leu-Arg-Arg-His-OH, (Disulfide bond) coupled to carrier protein.

Cross Reactivity:

PEPTIDE	%
BNP-32 (human)	100
BNP-32 (rat)	0.04
BNP-45 (rat)	0
BNP-26 (porcine)	0
ANF (1-28) (human)	0
Endothelin-1 (human, canine, porcine, rat, mouse, bovine)	0
Angiotensin II (human)	0
VIP (human, bovine, porcine, rat)	0

Cross reactivity data is based on corresponding RIA kit S-2168

Typical titration curve of BNP-32 in a competitive ELISA with this antibody:



Related Products: S-1136: human BNP-32 ELISA, high sensitivity for extracted samples
S-1194: human BNP-32 ELISA, extraction-free, for human samples
T-4022: anti human BNP-32, purified rabbit IgG

This product contains no preservative and is intended for laboratory use and research purposes only. Purchase of this product does not include authorization to use it in diagnostic or therapeutic applications.

T-4023

neat antiserum

20.7.2020