



BMA BIOMEDICALS



Peninsula Laboratories

S-1522

MOTS-c (rat) ELISA

MOTS-c (mitochondrial ORF of the twelve S c) is a mitochondrial-derived peptide (MDP) of sixteen amino acids with distinct biological activities. MOTS-c has been shown to target the skeletal muscle and enhance glucose metabolism. As such, MOTS-c has implications in the regulation of obesity, diabetes, exercise, and longevity.

This ELISA was developed with serum from rabbits immunized with MOTS-c coupled to a carrier protein.

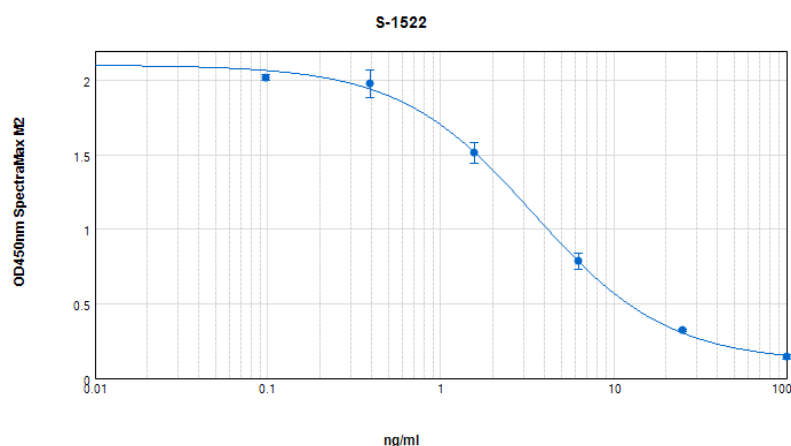
TECHNICAL AND ANALYTICAL CHARACTERISTICS

Lot number:	A18172
Host species:	Rabbit IgG
Quantity:	96 tests
Format:	Extraction-free kit for rat serum or plasma (EIAS type).
Shelf-life:	One year from production date. Store refrigerated at 4° - 8°C.
Applications:	This ELISA has been validated with the included reagents. It is intended to be used with samples of rat origin (original protocol V, Ab1hr.Std2hr.BtOH). For research use only. Please see www.bma.ch for protocols and general information.
Range:	0-100ng/ml
Average IC50:	3ng/ml
Immunogen:	Synthetic peptide H-Met-Lys-Arg-Lys-Glu-Met-Gly-Tyr-Ile-Phe-Phe-Ser-Gln-Arg-Thr-Leu-Arg-Asn-Pro-Leu-OH coupled to carrier protein.

Cross-Reactivity:

PEPTIDE:	%:
MOTS-c (rat)	100
MOTS-c (mouse)	0
MOTS-c (human)	0

Typical titration curve of MOTS-c in a competitive ELISA with this antibody:



Suggested Preparation of Standards		
	ng/ml	Range: 0.10 to 100ng/ml
Stock	1000	
S1	100.00	Add 100µl Stock + 900µl diluent
S2	25.00	Add 200µl S1 + 600µl diluent
S3	6.25	Add 200µl S2 + 600µl diluent
S4	1.56	Add 200µl S3 + 600µl diluent
S5	0.39	Add 200µl S4 + 600µl diluent
S6	0.10	Add 200µl S5 + 600µl diluent
S0	0.00	500µl diluent

Related Products:

- T-4978: anti (hu), lyophilized antiserum for ELISA
- S-1524: ELISA, high sensitivity for extracted samples (hu)
- S-1526: ELISA, extraction-free for serum and plasma samples (hu)
- S-1524: ELISA, high sensitivity for extracted samples (ms)
- S-1519: ELISA, high sensitivity for extracted samples (rt)
- S-1521: ELISA, extraction-free for serum and plasma samples(ms)

This product contains Thimerosal as a preservative and is intended for laboratory use and research purposes only. Purchase of this product does not include authorization to use it in diagnostic or therapeutic applications.

S-1522

EIAS – rt

30.7.2020

BMA BIOMEDICALS, Rheinstrasse 28-32, CH-4302 Augst (Switzerland)
 Phone: +41 61 811 6222, Fax: +41 61 811 6006, info@bma.ch, www.bma.ch