



BMA BIOMEDICALS



Peninsula Laboratories

---

## S-1518 MOTS-c (mouse) ELISA

MOTS-c (mitochondrial ORF of the twelve S c) is a mitochondrial-derived peptide (MDP) of sixteen amino acids with distinct biological activities. MOTS-c has been shown to target the skeletal muscle and enhance glucose metabolism. As such, MOTS-c has implications in the regulation of obesity, diabetes, exercise, and longevity.

This ELISA was developed with serum from rabbits immunized with MOTS-c coupled to a carrier protein.

---

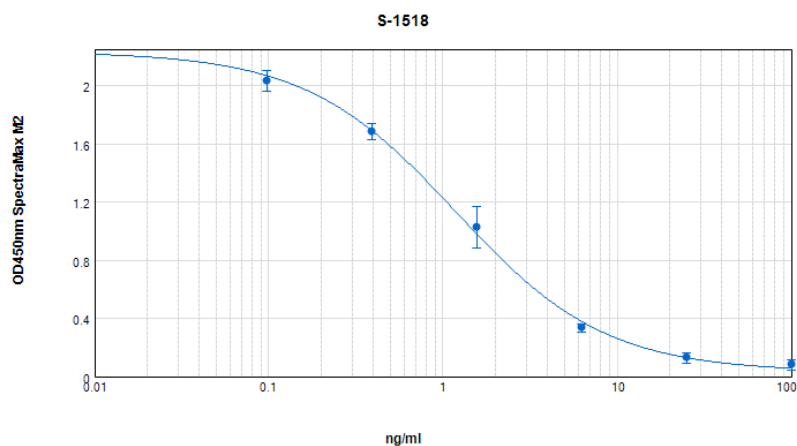
### TECHNICAL AND ANALYTICAL CHARACTERISTICS

<b>Lot number:</b>	A17876
<b>Host species:</b>	Rabbit IgG
<b>Quantity:</b>	96 tests
<b>Format:</b>	Formulated for extracted samples (EIAH type).
<b>Shelf-life:</b>	One year from production date. Store refrigerated at 4° - 8°C.
<b>Applications:</b>	This ELISA has been validated with the included reagents. It is intended to be used with appropriately extracted samples (original protocol III, Std.Ab1hr.Bt). For research use only. Please see <a href="http://www.bma.ch">www.bma.ch</a> for protocols and general information.
<b>Range:</b>	0 – 100ng/ml
<b>Average IC50:</b>	1.25ng/ml
<b>Immunogen:</b>	Synthetic peptide H- Met-Lys-Trp-Glu-Glu-Met-Gly-Tyr-Ile-Phe-Leu -OH coupled to carrier protein.

#### Cross-Reactivity:

Peptide:	%:
MOTS-c (mouse)	100
MOTS-c (rat)	0

Typical titration curve of MOTS-c in a competitive ELISA with this antibody:



Suggested Preparation of Standards		
	ng/ml	Range: 0.10 to 100ng/ml
<b>Stock</b>	1000	
<b>S1</b>	100.00	Add 100µl Stock + 900µl diluent
<b>S2</b>	25.00	Add 200µl S1 + 600µl diluent
<b>S3</b>	6.25	Add 200µl S2 + 600µl diluent
<b>S4</b>	1.56	Add 200µl S3 + 600µl diluent
<b>S5</b>	0.39	Add 200µl S4 + 600µl diluent
<b>S6</b>	0.10	Add 200µl S5 + 600µl diluent
<b>S0</b>	0.00	500µl diluent

Related Products:

- S-1519: MOTS-c (rat) ELISA, high sensitivity for extracted samples
- S-1524: MOTS-c (human) ELISA, high sensitivity for extracted samples
- S-1521: MOTS-c (mouse) ELISA, extraction-free for mouse samples
- S-1522: MOTS-c (rat) ELISA, extraction-free for rat samples
- S-1526: MOTS-c (human) ELISA, extraction-free for human samples.
- S-1188: ELISA, high sensitivity for extracted samples (1-10)
- S-1344: ELISA, high sensitivity for extracted samples (1-12), rat
- T-4978: anti human MOTS-c, rabbit polyclonal antiserum.

---

This product contains Thimerosal as a preservative and is intended for laboratory use and research purposes only. Purchase of this product does not include authorization to use it in diagnostic or therapeutic applications.

S-1518

EIAH - mouse

23.7.2020

---

BMA BIOMEDICALS, Rheinstrasse 28-32, CH-4302 Augst (Switzerland)  
 Phone: +41 61 811 6222, Fax: +41 61 811 6006, info@bma.ch, www.bma.ch