



BMA BIOMEDICALS



Peninsula Laboratories

---

## S-1517

### Adropin (34-76) (human, mouse, rat) ELISA [UniProt: Q6UWT2, Q8K1D8, D3ZUG5]

Adropin is a secreted factor involved in energy homeostasis and lipid metabolism. It is encoded by the energy homeostasis associated gene (Enho) and is expressed in liver and brain. In diet-induced obesity (DIO) mice Adropin (34-76) attenuated hepatosteatosis and insulin resistance independently of adiposity or food intake. Additionally, adropin could be a regulator of endothelial function.

This ELISA was developed with serum from rabbits immunized with Adropin (34-76) to a carrier protein.

---

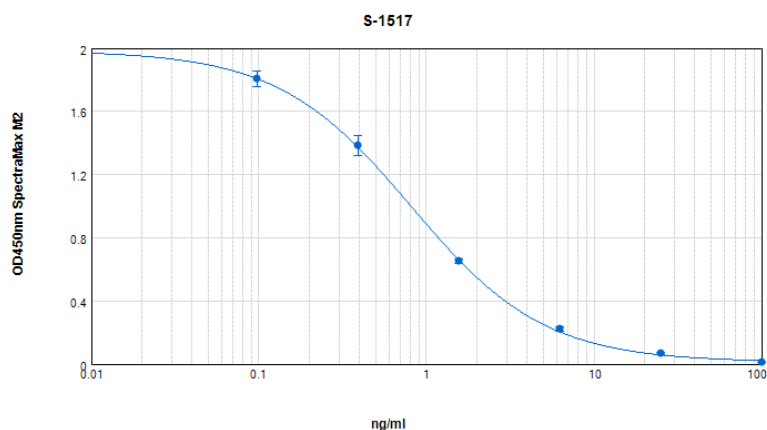
#### TECHNICAL AND ANALYTICAL CHARACTERISTICS

<b>Lot number:</b>	A18162
<b>Host species:</b>	Rabbit IgG
<b>Quantity:</b>	96 tests
<b>Format:</b>	Extraction-free kit for mouse serum or plasma (EIAS type).
<b>Shelf-life:</b>	One year from production date. Store refrigerated at 4° - 8°C.
<b>Applications:</b>	This ELISA has been validated with the included reagents. It is intended to be used with samples of mouse origin (original protocol V, Ab1hr.Std2hr.BtON). For research use only. Please see <a href="http://www.bma.ch">www.bma.ch</a> for protocols and general information.
<b>Range:</b>	0-100ng/ml
<b>Average IC50:</b>	0.8ng/ml
<b>Immunogen:</b>	Synthetic peptide H-Cys-His-Ser-Arg-Ser-Ala-Asp-Val-Asp-Ser-Leu-Ser-Glu-Ser-Ser-Pro-Asn-Ser-Ser-Pro-Gly-Pro-Cys-Pro-Glu-Lys-Ala-Pro-Pro-Pro-Gln-Lys-Pro-Ser-His-Glu-Gly-Ser-Tyr-Leu-Leu-Gln-Pro-OH; Disulfide bond Cys34 - Cys56 coupled to a carrier protein.

#### Cross-Reactivity:

PEPTIDE:	%:
Adropin (34-76) (human mouse, rat)	100

Typical titration curve of Adropin (34-76) in a competitive ELISA with this antibody:



<b>Suggested Preparation of Standards</b>		
	<b>ng/ml</b>	Range: 0.10 to 100ng/ml
<b>Stock</b>	1000	
<b>S1</b>	100.00	Add 100µl Stock + 900µl diluent
<b>S2</b>	25.00	Add 200µl S1 + 600µl diluent
<b>S3</b>	6.25	Add 200µl S2 + 600µl diluent
<b>S4</b>	1.56	Add 200µl S3 + 600µl diluent
<b>S5</b>	0.39	Add 200µl S4 + 600µl diluent
<b>S6</b>	0.10	Add 200µl S5 + 600µl diluent
<b>S0</b>	0.00	500µl diluent

Related Products: S-1437: ELISA, extraction-free for serum and plasma samples  
S-1385: ELISA, high sensitivity for extracted samples

---

This product contains Thimerosal as a preservative and is intended for laboratory use and research purposes only. Purchase of this product does not include authorization to use it in diagnostic or therapeutic applications.

S-1517

EIAS

1.3.2021