



BMA BIOMEDICALS



Peninsula Laboratories

---

## S-1516

### Limostatin (Lst-15) (*Drosophila*) ELISA [UniProt: A0A0B4K762]

Limostatin is a 15-amino acid peptide hormone found in *Drosophila melanogaster* and is induced by carbohydrate restriction from endocrine cells associated with the gut. It suppresses insulin production and release by insulin-producing cells. Limostatin is important in adaptation to starvation conditions, and represents a mechanism by which insulin is negatively regulated.

This ELISA was developed with serum from rabbits immunized with Limostatin coupled to a carrier protein.

---

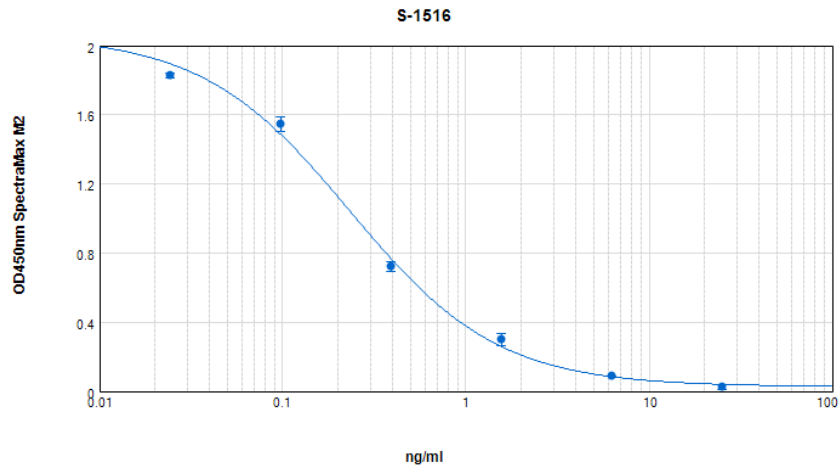
#### TECHNICAL AND ANALYTICAL CHARACTERISTICS

<b>Lot number:</b>	A16135
<b>Host species:</b>	Rabbit IgG
<b>Quantity:</b>	96 tests
<b>Format:</b>	Formulated for extracted samples (EIAH type).
<b>Shelf-life:</b>	One year from production date. Store refrigerated at 4° - 8°C.
<b>Applications:</b>	This ELISA has been validated with the included reagents. It is intended to be used with appropriately extracted samples (original protocol III, Std.Ab1hr.Bt). For research use only. Please see <a href="http://www.bma.ch">www.bma.ch</a> for protocols and general information.
<b>Range:</b>	0-25ng/ml
<b>Average IC50:</b>	0.3ng/ml
<b>Immunogen:</b>	Synthetic peptide H-Ala-Ile-Val-Phe-Arg-Pro-Leu-Phe-Val-Tyr-Lys-Gln-Gln-Asp-Ile-NH <sub>2</sub> coupled to carrier protein.

#### Cross-Reactivity:

PEPTIDE:	%:
Limostatin (Lst-15) ( <i>Drosophila</i> )	100

Typical titration curve of Limostatin in a competitive ELISA with this antibody:



<b>Suggested Preparation of Standards</b>		
	<b>ng/ml</b>	Range: 0.02 to 25ng/ml
<b>Stock</b>	1000	
<b>S1</b>	25.00	Add 25µl Stock + 975µl diluent
<b>S2</b>	6.25	Add 200µl S1 + 600µl diluent
<b>S3</b>	1.56	Add 200µl S2 + 600µl diluent
<b>S4</b>	0.39	Add 200µl S3 + 600µl diluent
<b>S5</b>	0.10	Add 200µl S4 + 600µl diluent
<b>S6</b>	0.02	Add 200µl S5 + 600µl diluent
<b>S0</b>	0.00	500µl diluent

Related Products: T-4974: Rabbit anti Limostatin, Lyophilized Antiserum for ELISA

---

This product contains Thimerosal as a preservative and is intended for laboratory use and research purposes only. Purchase of this product does not include authorization to use it in diagnostic or therapeutic applications.

S-1516

EIAH

1.3.2021

---

BMA BIOMEDICALS, Rheinstrasse 28-32, CH-4302 Augst (Switzerland)  
 Phone: +41 61 811 6222, Fax: +41 61 811 6006, info@bma.ch, www.bma.ch