



BMA BIOMEDICALS



Peninsula Laboratories

S-1515

Prostate-Specific Antigen (243-261) ELISA

Prostate-specific antigen (PSA), also known as gamma-seminoprotein or kallikrein-3 (KLK3), is a glycoprotein enzyme encoded in humans by the KLK3 gene. PSA is a member of the kallikrein-related peptidase family and is secreted by the epithelial cells of the prostate gland.

This ELISA was developed with serum from rabbits immunized with Prostate-Specific Antigen (243-261) coupled to a carrier protein.

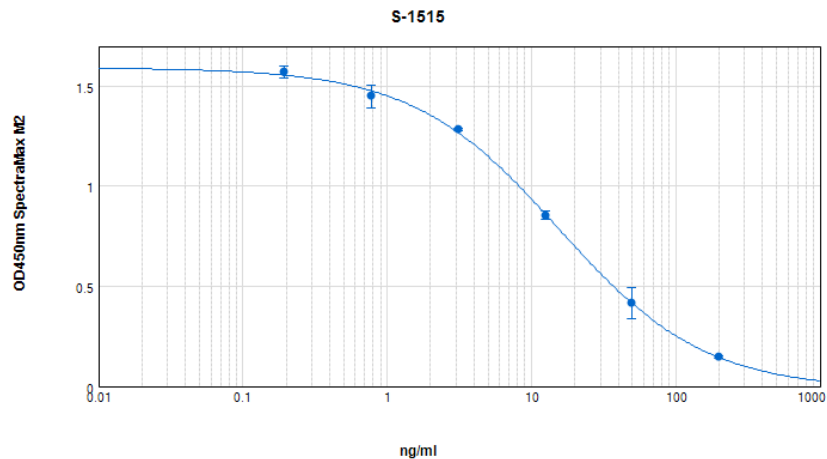
TECHNICAL AND ANALYTICAL CHARACTERISTICS

- Lot number:** n/a
- Host species:** Rabbit IgG
- Quantity:** 96 tests
- Format:** Extraction-free kit for human serum or plasma (EIAS type).
- Shelf-life:** One year from production date. Store refrigerated at 4° - 8°C.
- Applications:** This ELISA has been validated with the included reagents. It is intended to be used with samples of human origin (original protocol V, Ab1hr.Std2hr.BtON). For research use only.
Please see www.bma.ch for protocols and general information.
- Range:** 0-200ng/ml
- Average IC50:** 15ng/ml
- Immunogen:** Synthetic peptide H-Tyr-Thr-Lys-Val-Val-His-Tyr-Arg-Lys-Trp-Ile-Lys-Asp-Thr-Ile-Val-Ala-Asn-Pro-OH coupled to a carrier protein.

Cross-Reactivity:

PEPTIDE:	%:
Prostate-Specific Antigen (PSA) (243-261)	100
Beta-Casomorphin-5	0
Beta-Casomorphin-7	0

Typical titration curve of Prostate-Specific Antigen (243-261) in a competitive ELISA with this antibody:



Suggested Preparation of Standards		
	ng/ml	Range: 0.20 to 200ng/ml
Stock	1000	
S1	200.00	Add 200µl Stock + 800µl diluent
S2	50.00	Add 200µl S1 + 600µl diluent
S3	12.50	Add 200µl S2 + 600µl diluent
S4	3.13	Add 200µl S3 + 600µl diluent
S5	0.78	Add 200µl S4 + 600µl diluent
S6	0.20	Add 200µl S5 + 600µl diluent
S0	0.00	500µl diluent

Related Products: S-1514: ELISA, high sensitivity for extracted samples
T-4872: Rabbit anti Prostate-Specific Antigen (243-261)

This product contains Thimerosal as a preservative and is intended for laboratory use and research purposes only. Purchase of this product does not include authorization to use it in diagnostic or therapeutic applications.

S-1515

EIAS

1.3.2021