



BMA BIOMEDICALS



Peninsula Laboratories

S-1507

Lactoferricin B25 (bovine) ELISA

The antimicrobial peptide lactoferricin B25 is a fragment of cow's milk protein lactoferrin. The peptide exhibits potent dose-dependent and time-dependent anticancer activity against human stomach cancer cell cultures via apoptosis and autophagy. LFcInB25 is expected to yield novel anticancer drugs

This ELISA was developed with serum from rabbits immunized with Lactoferricin B25 coupled to a carrier protein.

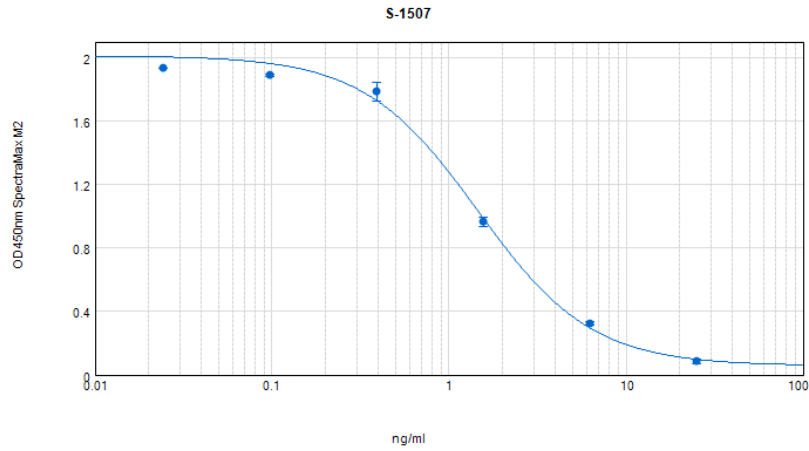
TECHNICAL AND ANALYTICAL CHARACTERISTICS

Lot number:	A16078
Host species:	Rabbit IgG
Quantity:	96 tests
Format:	Formulated for extracted samples (EIAH type).
Shelf-life:	One year from production date. Store refrigerated at 4° - 8°C.
Applications:	This ELISA has been validated with the included reagents. It is intended to be used with appropriately extracted samples (original protocol III, Std.Ab1hr.Bt). For research use only. Please see www.bma.ch for protocols and general information.
Range:	0-25ng/ml
Average IC50:	1.5ng/ml
Immunogen:	Synthetic peptide H-Phe-Lys-Cys-Arg-Arg-Trp-Gln-Trp-Arg-Met-Lys-Lys-Leu-Gly-Ala-Pro-Ser-Ile-Thr-Cys-Val-Arg-Arg-Ala-Phe-OH coupled to carrier protein.

Cross-Reactivity:

PEPTIDE:	%:
Lactoferricin B25 (bovine)	100
Beta Casomorphin-5 (bovine)	0
Beta Casomorphin-7 (bovine)	0

Typical titration curve of Lactoferricin B25 in a competitive ELISA with this antibody:



Suggested Preparation of Standards		
	ng/ml	Range: 0.02 to 25ng/ml
Stock	1000	
S1	25.00	Add 25µl Stock + 975µl diluent
S2	6.25	Add 200µl S1 + 600µl diluent
S3	1.56	Add 200µl S2 + 600µl diluent
S4	0.39	Add 200µl S3 + 600µl diluent
S5	0.10	Add 200µl S4 + 600µl diluent
S6	0.02	Add 200µl S5 + 600µl diluent
S0	0.00	500µl diluent

This product contains Thimerosal as a preservative and is intended for laboratory use and research purposes only. Purchase of this product does not include authorization to use it in diagnostic or therapeutic applications.

S-1507

EIAH

1.3.2021