



BMA BIOMEDICALS



Peninsula Laboratories

S-1423

Adrenomedullin (rat) ELISA [UniProt: P43145]

Adrenomedullin (ADM or AM) is a vasodilator peptide hormone consisted of 52 amino acids with an intramolecular disulfide bond. It shows a slight homology with the calcitonin gene-related peptide (CGRP). Adrenomedullin was initially isolated from a pheochromocytoma, a tumor of the adrenal medulla. It may function as a hormone in the circulation control because it is found in blood in a considerable concentration.

This ELISA was developed with serum from rabbits immunized with Adrenomedullin coupled to a carrier protein.

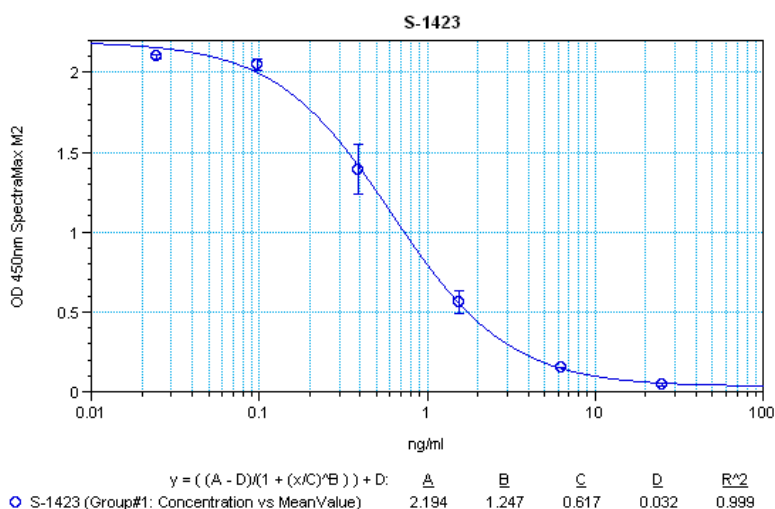
TECHNICAL AND ANALYTICAL CHARACTERISTICS

Lot number:	A07650
Host species:	Rabbit IgG
Quantity:	96 tests
Format:	Formulated for extracted samples (EIAH type).
Shelf-life:	One year from production date. Store refrigerated at 4° - 8°C.
Applications:	This ELISA has been validated with the included reagents. It is intended to be used with appropriately extracted samples (original protocol III, Std.Ab1hr.Bt). For research use only. Please see www.bma.ch for protocols and general information.
Range:	0-25ng/ml
Average IC50:	0.65ng/ml
Immunogen:	Synthetic peptide H-Tyr-Arg-Gln-Ser-Met-Asn-Gln-Gly-Ser-Arg-Ser-Thr-Gly-Cys-Arg-Phe-Gly-Thr-Cys-Thr-Met-Gln-Lys-Leu-Ala-His-Gln-Ile-Tyr-Gln-Phe-Thr-Asp-Lys-Asp-Lys-Asp-Gly-Met-Ala-Pro-Arg-Asn-Lys-Ile-Ser-Pro-Gln-Gly-Tyr-NH ₂ , (Disulfide bond) coupled to carrier protein.

Cross-Reactivity:

PEPTIDE:	%:
Adrenomedullin (rat)	100
Adrenomedullin (human)	0
Proadrenomedullin (1-20) (human)	0
Proadrenomedullin (1-20) (rat)	0
Amylin (free acid) (human)	0
Endothelin-1 (human, porcine, canine, rat, mouse, bovine)	0

Titration curve of Adrenomedullin in a competitive ELISA with this antibody:



Suggested Preparation of Standards		
	ng/ml	Range: 0.02 to 25ng/ml
Stock	1000	
S1	25.00	Add 25µl Stock + 975µl diluent
S2	6.25	Add 200µl S1 + 600µl diluent
S3	1.56	Add 200µl S2 + 600µl diluent
S4	0.39	Add 200µl S3 + 600µl diluent
S5	0.10	Add 200µl S4 + 600µl diluent
S6	0.02	Add 200µl S5 + 600µl diluent
S0	0.00	500µl diluent

Related Products:

- T-4133: Rabbit anti Proadrenomedullin (1-20), diluted antiserum
- T-4134: Rabbit anti Proadrenomedullin (1-20), neat antiserum
- T-4843: Rabbit anti Proadrenomedullin (45-92), purified IgG
- S-1423: ELISA, high sensitivity for extracted samples (rt)
- S-1296: ELISA, high sensitivity for extracted samples (hu)
- T-4130: Rabbit anti Adrenomedullin, purified IgG
- T-4129: Rabbit anti Adrenomedullin (hu), diluted antiserum
- T-4131: Rabbit anti Adrenomedullin (hu), neat antiserum
- T-4136: Rabbit anti Adrenomedullin (rt), diluted antiserum
- T-4138: Rabbit anti Adrenomedullin (rt), neat antiserum

This product contains Thimerosal as a preservative and is intended for laboratory use and research purposes only. Purchase of this product does not include authorization to use it in diagnostic or therapeutic applications.

S-1423

EIAH

1.3.2021

BMA BIOMEDICALS, Rheinstrasse 28-32, CH-4302 Augst (Switzerland)
 Phone: +41 61 811 6222, Fax: +41 61 811 6006, info@bma.ch, www.bma.ch