



BMA BIOMEDICALS



Peninsula Laboratories

---

## S-1353

### Luteinizing Hormone-Releasing Hormone (LHRH) ELISA

Luteinizing hormone-releasing hormone (LHRH), also known as Gonadotropin-Releasing Hormone (GnRH) or Luteinizing Hormone-Releasing Factor (LRF), is a hypothalamic neuropeptide which acts on the pituitary to stimulate the release of luteinizing hormone (LH) and follicle-stimulating hormone (FSH). LHRH may act as a growth modulatory factor in tumors of the reproductive system. The effects of LHRH are mediated by high-affinity G protein-coupled LHRH-receptor (LHRH-R) on pituitary gonadotropes. HRH and LHRH receptors (LHRH-Rs) are expressed in human melanoma cells and LHRH-Rs are found in more than 50% of human breast cancers.

This ELISA was developed with serum from rabbits immunized with Luteinizing Hormone-Releasing Hormone coupled to a carrier protein.

---

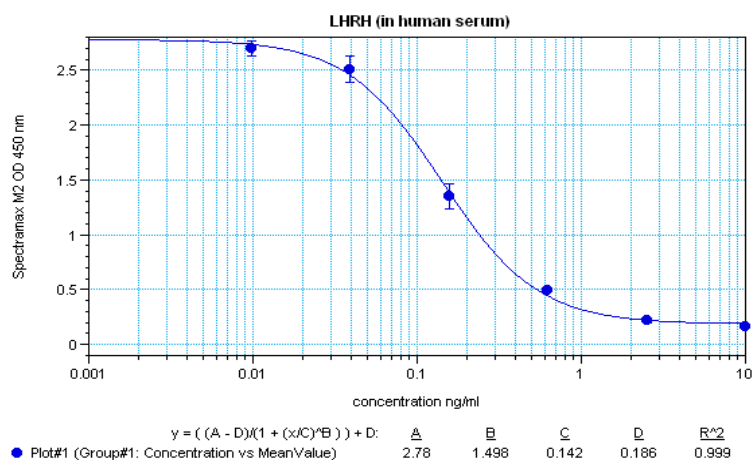
#### TECHNICAL AND ANALYTICAL CHARACTERISTICS

<b>Lot number:</b>	A16732
<b>Host species:</b>	Rabbit IgG
<b>Quantity:</b>	96 tests
<b>Format:</b>	Extraction-free kit for human serum or plasma (EIAS type).
<b>Shelf-life:</b>	One year from production date. Store refrigerated at 4° - 8°C.
<b>Applications:</b>	This ELISA has been validated with the included reagents. It is intended to be used with samples of human origin (original protocol V, Ab1hr.Std2hr.BtON). For research use only. Please see <a href="http://www.bma.ch">www.bma.ch</a> for protocols and general information.
<b>Range:</b>	0-10ng/ml
<b>Average IC50:</b>	0.14ng/ml
<b>Immunogen:</b>	Synthetic peptide Pyr-His-Trp-Ser-Tyr-Gly-Leu-Arg-Pro-Gly-NH <sub>2</sub> coupled to carrier protein.

#### Cross-Reactivity:

PEPTIDE:	%:
LHRH	100
LHRH (lamprey)	0.1
[D-Trp <sup>6</sup> , Des-Gly <sup>10</sup> ]-LHRH Ethylamide	0.1
LHRH (salmon)	0.002
[D-Ala <sup>6</sup> , Des-Gly <sup>10</sup> ]-LHRH Ethylamide	0.001
GnRH Precursor Peptide (14-69) (human)	0
GRF (human)	0
ACTH (1-39) (human)	0

Typical titration curve of Luteinizing Hormone-Releasing Hormone in a competitive ELISA with this antibody:



Suggested Preparation of Standards		
	ng/ml	Range: 0.01 to 10ng/ml
<b>Stock</b>	1000	
<b>S1</b>	10.00	Add 10µl Stock + 990µl diluent
<b>S2</b>	2.50	Add 200µl S1 + 600µl diluent
<b>S3</b>	0.63	Add 200µl S2 + 600µl diluent
<b>S4</b>	0.16	Add 200µl S3 + 600µl diluent
<b>S5</b>	0.04	Add 200µl S4 + 600µl diluent
<b>S6</b>	0.01	Add 200µl S5 + 600µl diluent
<b>S0</b>	0.00	500µl diluent

Related Products: T-4426: anti LHRH (hu), neat antiserum  
 T-4425: anti LHRH (hu), purified IgG  
 T-4424: anti LHRH (hu), diluted antiserum  
 S-1217: ELISA, high sensitivity for extracted samples

S-1353

EIAS – hu

22.9.2020