



BMA BIOMEDICALS



Peninsula Laboratories

S-1351

Luteinizing Hormone-Releasing Hormone (LHRH) ELISA

Luteinizing hormone-releasing hormone (LHRH), also known as Gonadotropin-Releasing Hormone (GnRH) or Luteinizing Hormone-Releasing Factor (LRF), is a hypothalamic neuropeptide which acts on the pituitary to stimulate the release of luteinizing hormone (LH) and follicle-stimulating hormone (FSH). LHRH may act as a growth modulatory factor in tumors of the reproductive system. The effects of LHRH are mediated by high-affinity G protein-coupled LHRH-receptor (LHRH-R) on pituitary gonadotropes. HRH and LHRH receptors (LHRH-Rs) are expressed in human melanoma cells and LHRH-Rs are found in more than 50% of human breast cancers.

This ELISA was developed with serum from rabbits immunized with Luteinizing Hormone-Releasing Hormone coupled to a carrier protein.

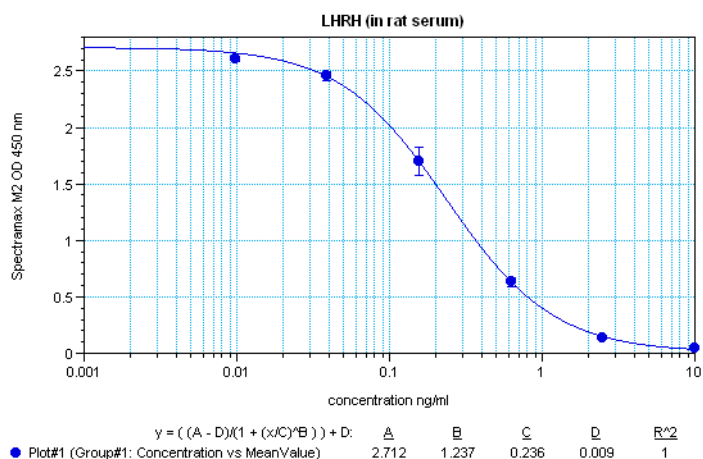
TECHNICAL AND ANALYTICAL CHARACTERISTICS

Lot number:	A16483
Host species:	Rabbit IgG
Quantity:	96 tests
Format:	Extraction-free kit for rat serum or plasma (EIAS type).
Shelf-life:	One year from production date. Store refrigerated at 4° - 8°C.
Applications:	This ELISA has been validated with the included reagents. It is intended to be used with samples of rat origin (original protocol V, Ab1hr.Std2hr.BtON). For research use only. Please see www.bma.ch for protocols and general information.
Range:	0-10ng/ml
Average IC50:	0.25ng/ml
Immunogen:	Synthetic peptide Pyr-His-Trp-Ser-Tyr-Gly-Leu-Arg-Pro-Gly-NH ₂ coupled to carrier protein.

Cross-Reactivity:

PEPTIDE:	%:
LHRH	100
LHRH (lamprey)	0.1
[D-Trp ⁶ , Des-Gly ¹⁰]-LHRH Ethylamide	0.1
LHRH (salmon)	0.002
[D-Ala ⁶ , Des-Gly ¹⁰]-LHRH Ethylamide	0.001
GnRH Precursor Peptide (14-69) (human)	0
GRF (human)	0
ACTH (1-39) (human)	0

Typical titration curve of Luteinizing Hormone-Releasing Hormone in a competitive ELISA with this antibody:



Suggested Preparation of Standards		
	ng/ml	Range: 0.01 to 10ng/ml
Stock	1000	
S1	10.00	Add 10µl Stock + 990µl diluent
S2	2.50	Add 200µl S1 + 600µl diluent
S3	0.63	Add 200µl S2 + 600µl diluent
S4	0.16	Add 200µl S3 + 600µl diluent
S5	0.04	Add 200µl S4 + 600µl diluent
S6	0.01	Add 200µl S5 + 600µl diluent
S0	0.00	500µl diluent

Related Products: T-4426: anti LHRH (hu), neat antiserum
 T-4425: anti LHRH (hu), purified IgG
 T-4424: anti LHRH (hu), diluted antiserum
 S-1217: ELISA, high sensitivity for extracted samples

This product contains Thimerosal as a preservative and is intended for laboratory use and research purposes only. Purchase of this product does not include authorization to use it in diagnostic or therapeutic applications.

S-1351

EIAS – rt

1.3.2021