



BMA BIOMEDICALS

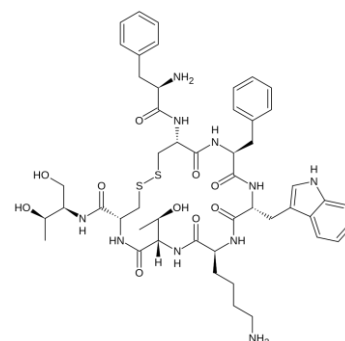


Peninsula Laboratories

## S-1342 Octreotide ELISA

**Octreotide** (brand name **Sandostatin**, among others) is an octapeptide that mimics natural somatostatin pharmacologically, though it is a more potent inhibitor of growth hormone, glucagon, and insulin than the natural hormone [Wikipedia]. Somatostatin (STT) analogs are important active pharmaceutical ingredients for the treatment of various tumors, and endocrine and digestive diseases. STT is one of the main inhibitors of endocrine and exocrine hormone secretion in humans.

This ELISA was developed with serum from rabbits immunized with Octreotide coupled to a carrier protein.



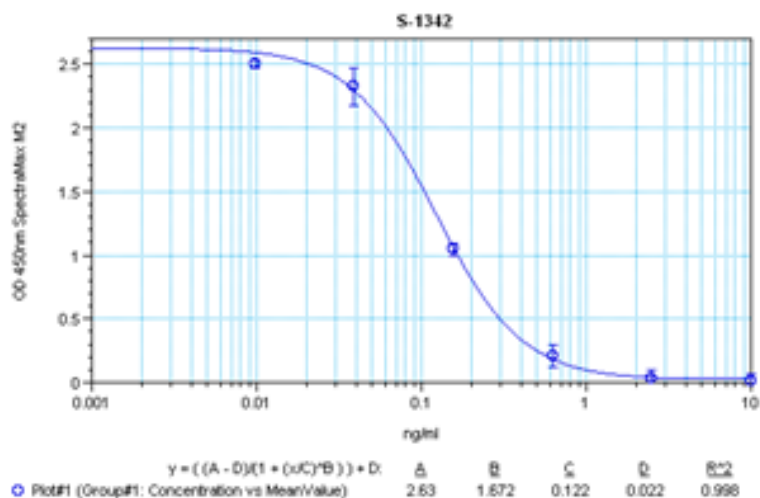
### TECHNICAL AND ANALYTICAL CHARACTERISTICS

- Lot number:** A18150
- Host species:** Rabbit IgG
- Quantity:** 96 tests
- Format:** Extraction-free kit for rat serum or plasma (EIAS type).
- Shelf-life:** One year from production date. Store refrigerated at 4° - 8°C.
- Applications:** This ELISA has been validated with the included reagents. It is intended to be used with samples of rat origin (original protocol V, Ab1hr.Std2hr.BtON). For research use only. Please see [www.bma.ch](http://www.bma.ch) for protocols and general information.
- Range:** 0 – 10ng/ml
- Average IC<sub>50</sub>:** 0.13ng/ml
- Immunogen:** Synthetic peptide H-D-Phe-Cys-Phe-D-Trp-Lys-Thr-Cys-L-threoninol (disulfide bond) coupled to carrier protein.

#### Cross Reactivity:

| Peptide:                    | %:         |
|-----------------------------|------------|
| <b>Octreotide</b>           | <b>100</b> |
| Somatostatin-14             | 0          |
| Somatostatin-28             | 0          |
| Somatostatin Analog, RC-160 | 0          |
| Somatostatin Analog, (CTOP) | 0          |

Typical titration curve of Octreotide in a competitive ELISA with this antibody:



| Suggested Preparation of Standards |       |                                |
|------------------------------------|-------|--------------------------------|
|                                    | ng/ml | Range: 0.01 to 10ng/ml         |
| <b>Stock</b>                       | 1000  |                                |
| <b>S1</b>                          | 10.00 | Add 10µl Stock + 990µl diluent |
| <b>S2</b>                          | 2.50  | Add 200µl S1 + 600µl diluent   |
| <b>S3</b>                          | 0.63  | Add 200µl S2 + 600µl diluent   |
| <b>S4</b>                          | 0.16  | Add 200µl S3 + 600µl diluent   |
| <b>S5</b>                          | 0.04  | Add 200µl S4 + 600µl diluent   |
| <b>S6</b>                          | 0.01  | Add 200µl S5 + 600µl diluent   |
| <b>S0</b>                          | 0.00  | 500µl diluent                  |

Related Products:

- T-4582: neat antiserum
- T-4590: diluted antiserum
- T-4874: purified IgG
- S-1275: ELISA, high sensitivity for extracted samples
- S-1341: ELISA, extraction-free for human samples

This product contains Thimerosal as a preservative and is intended for laboratory use and research purposes only. Purchase of this product does not include authorization to use it in diagnostic or therapeutic applications.

S-1342

EIAS - rat

22.5.2020