



BMA BIOMEDICALS



Peninsula Laboratories

---

## S-1318

### LL-37 ELISA

LL-37 is an antimicrobial peptide that belongs to the cathelicidin family of peptides. This peptide corresponds to the sequence of the first amphipathic alpha-helical peptide isolated from human. LL-37 plays an important role in the first line of defense against local infection and systemic invasion of pathogens at sites of inflammation and wounds. Also, LL-37 is significantly resistant to proteolytic degradation in solution.

This ELISA was developed with serum from rabbits immunized with LL-37 coupled to a carrier protein.

---

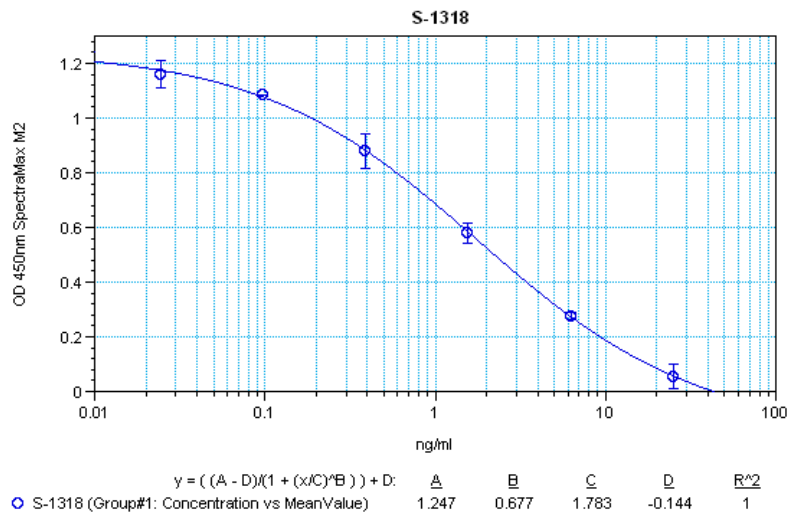
#### TECHNICAL AND ANALYTICAL CHARACTERISTICS

<b>Lot number:</b>	A17472
<b>Host species:</b>	Rabbit IgG
<b>Quantity:</b>	96 tests
<b>Format:</b>	Formulated for extracted samples (EIAH type).
<b>Shelf-life:</b>	One year from production date. Store refrigerated at 4° - 8°C.
<b>Applications:</b>	This ELISA has been validated with the included reagents. It is intended to be used with appropriately extracted samples (original protocol III, Std.Ab1hr.Bt). For research use only. Please see <a href="http://www.bma.ch">www.bma.ch</a> for protocols and general information.
<b>Range:</b>	0-25ng/ml
<b>Average IC50:</b>	1.8ng/ml
<b>Immunogen:</b>	Synthetic peptide H-Leu-Leu-Gly-Asp-Phe-Phe-Arg-Lys-Ser-Lys-Glu-Lys-Ile-Gly-Lys-Glu-Phe-Lys-Arg-Ile-Val-Gln-Arg-Ile-Lys-Asp-Phe-Leu-Arg-Asn-Leu-Val-Pro-Arg-Thr-Glu-Ser-NH <sub>2</sub> coupled to carrier protein.

#### Cross-Reactivity:

PEPTIDE:	%:
LL-37	100
Thymosin $\beta$ 4	0
Thymosin $\alpha$ 1	0

Typical titration curve of LL-37 in a competitive ELISA with this antibody:



Suggested Preparation of Standards		
	ng/ml	Range: 0.02 to 25ng/ml
<b>Stock</b>	1000	
<b>S1</b>	25.00	Add 25µl Stock + 975µl diluent
<b>S2</b>	6.25	Add 200µl S1 + 600µl diluent
<b>S3</b>	1.56	Add 200µl S2 + 600µl diluent
<b>S4</b>	0.39	Add 200µl S3 + 600µl diluent
<b>S5</b>	0.10	Add 200µl S4 + 600µl diluent
<b>S6</b>	0.02	Add 200µl S5 + 600µl diluent
<b>S0</b>	0.00	500µl diluent

Related Products: T-4859: Rabbit anti LL-37, purified IgG

This product contains Thimerosal as a preservative and is intended for laboratory use and research purposes only. Purchase of this product does not include authorization to use it in diagnostic or therapeutic applications.

S-1318

EIAH

1.3.2021