



BMA BIOMEDICALS



Peninsula Laboratories

S-1310

Exendin-4 (human) ELISA

Exendin-4 is a 39 amino acid peptide amide known to be a long-acting agonist of the glucagon-like peptide 1 receptor (GLP-1). It is involved in glucose-dependent enhancement of insulin secretion, reduction of hyperglycemia, and glucose-dependent suppression of high glucagon secretion. Exendin-4 is used as active component of Byetta[®] (exenatide) injection, which may improve glycemic control in people with type 2 diabetes mellitus.

This ELISA was developed with serum from rabbits immunized with Exendin-4 coupled to a carrier protein.

TECHNICAL AND ANALYTICAL CHARACTERISTICS

Lot number:	A17027
Host species:	Rabbit IgG
Quantity:	96 tests
Format:	Extraction-free kit for human serum or plasma (EIAS type).
Shelf-life:	One year from production date. Store refrigerated at 4° - 8°C.
Applications:	This ELISA has been validated with the included reagents. It is intended to be used with samples of human origin (original protocol V, Ab1hr.Std2hr.BtON). For research use only. Please see www.bma.ch for protocols and general information.
Range:	0-25ng/ml
Average IC50:	0.7ng/ml
Immunogen:	Synthetic peptide H-His-Gly-Glu-Gly-Thr-Phe-Thr-Ser-Asp-Leu-Ser-Lys-Gln-Met-Glu-Glu-Glu-Ala-Val-Arg-Leu-Phe-Ile-Glu-Trp-Leu-Lys-Asn-Gly-Gly-Pro-Ser-Ser-Gly-Ala-Pro-Pro-Pro-Ser-NH ₂ coupled to carrier protein.

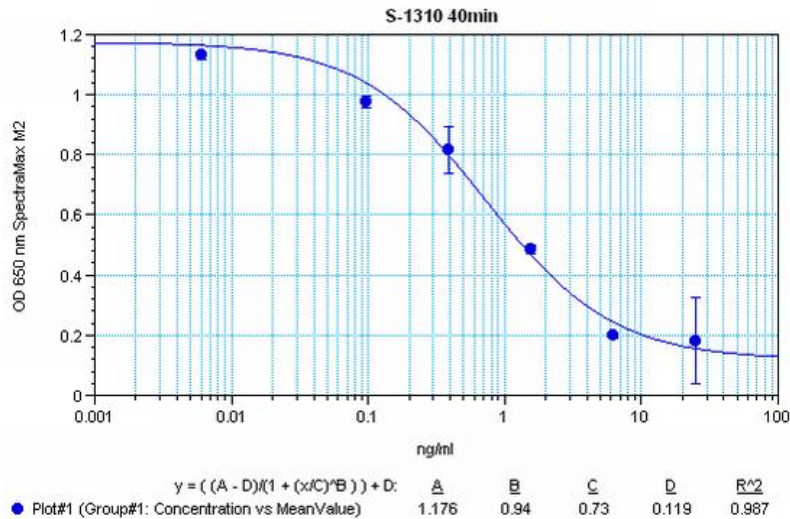
Cross-Reactivity:

PEPTIDE:	%:
Exendin-4	100
Exendin-3	100
Exendin-4 (3-39)	100
Exendin-4 (9-39)	100
GLP-1 (7-36) amide (human, rat, mouse, bovine, guinea pig)	0
GLP-1 (7-37) (human, rat, mouse, bovine, guinea pig)	0
GLP-1 (1-37) (human, rat, mouse, bovine, guinea pig)	0

Cross-Reactivity (continued):

PEPTIDE:	%:
GLP-2 (1-34) (human)	0
Glucagon (1-29) (human)	0

Typical titration curve of Exendin-4 in a competitive ELISA with this antibody:



Suggested Preparation of Standards		
	ng/ml	Range: 0.02 to 25ng/ml
Stock	1000	
S1	25.00	Add 25µl Stock + 975µl diluent
S2	6.25	Add 200µl S1 + 600µl diluent
S3	1.56	Add 200µl S2 + 600µl diluent
S4	0.39	Add 200µl S3 + 600µl diluent
S5	0.10	Add 200µl S4 + 600µl diluent
S6	0.02	Add 200µl S5 + 600µl diluent
S0	0.00	500µl diluent

Related Products: S-1311: ELISA, extraction-free for rat serum and plasma samples
 S-1297: ELISA, high sensitivity for extracted samples
 T-4844: anti Exendin-4, purified IgG, host: rabbit

This product contains Thimerosal as a preservative and is intended for laboratory use and research purposes only. Purchase of this product does not include authorization to use it in diagnostic or therapeutic applications.

S-1310

EIAS - hu

16.9.2020