



BMA BIOMEDICALS



Peninsula Laboratories

---

**S-1297**

**Exendin-4 ELISA [UniProt P26349]**

Exendin-4 is a 39 amino acid peptide amide known to be a long-acting agonist of the glucagon-like peptide 1 receptor (GLP-1). It is involved in glucose-dependent enhancement of insulin secretion, reduction of hyperglycemia, and glucose-dependent suppression of high glucagon secretion. Exendin-4 is used as active component of Byetta® (exenatide) injection, which may improve glycemic control in people with type 2 diabetes mellitus.

This ELISA was developed with serum from rabbits immunized with Exendin-4 coupled to a carrier protein.

---

**TECHNICAL AND ANALYTICAL CHARACTERISTICS**

<b>Lot number:</b>	A18029
<b>Host species:</b>	Rabbit IgG
<b>Quantity:</b>	96 tests
<b>Format:</b>	Formulated for extracted samples (EIAH type).
<b>Shelf-life:</b>	One year from production date. Store refrigerated at 4° - 8°C.
<b>Applications:</b>	This ELISA has been validated with the included reagents. It is intended to be used with appropriately extracted samples (original protocol III, Std.Ab1hr.Bt). For research use only. Please see <a href="http://www.bma.ch">www.bma.ch</a> for protocols and general information.
<b>Range:</b>	0 - 25ng/ml
<b>Average IC50:</b>	0.9ng/ml
<b>Immunogen:</b>	Synthetic peptide H-His-Gly-Glu-Gly-Thr-Phe-Thr-Ser-Asp-Leu-Ser-Lys-Gln-Met-Glu-Glu-Glu-Ala-Val-Arg-Leu-Phe-Ile-Glu-Trp-Leu-Lys-Asn-Gly-Gly-Pro-Ser-Ser-Gly-Ala-Pro-Pro-Pro-Ser-NH <sub>2</sub> coupled to carrier protein.

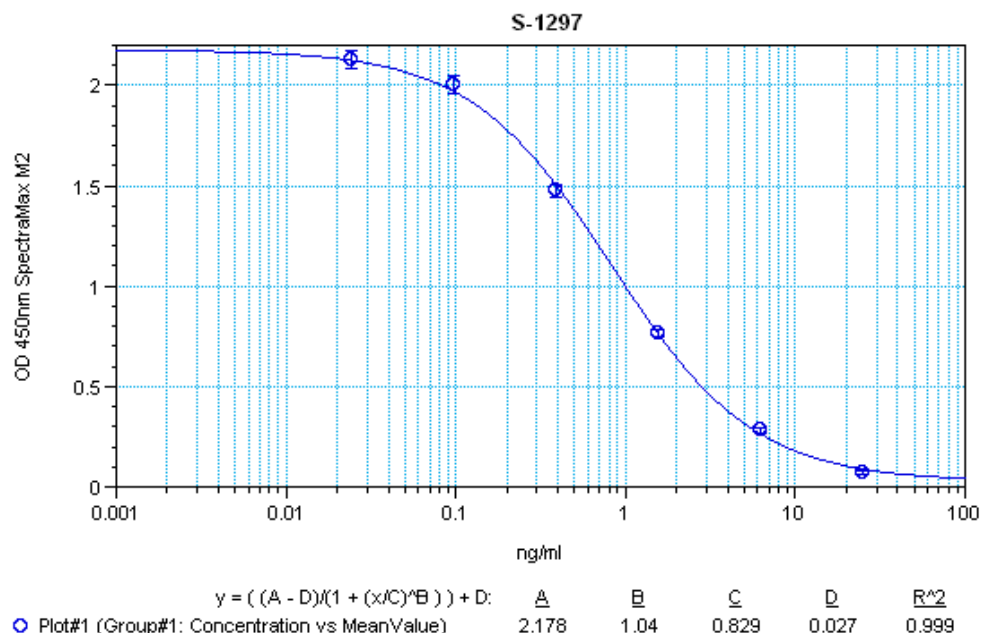
**Cross-Reactivity:**

<b>PEPTIDE:</b>	<b>%:</b>
Exendin-4	100
Exendin-3	100
Exendin-4 (3-39)	100
Exendin-4 (9-39)	100
GLP-1 (7-36) amide (human, rat, mouse, bovine, guinea pig)	0
GLP-1 (7-37) (human, rat, mouse, bovine, guinea pig)	0

## Cross-Reactivity (continued):

PEPTIDE:	%:
GLP-1 (1-37) (human, rat, mouse, bovine, guinea pig)	0
GLP-2 (1-34) (human)	0
Glucagon (1-29) (human)	0

Typical titration curve of Exendin-4 in a competitive ELISA with this antibody:



Suggested Preparation of Standards		
	ng/ml	Range: 0.02 to 25ng/ml
<b>Stock</b>	1000	
<b>S1</b>	25.00	Add 25µl Stock + 975µl diluent
<b>S2</b>	6.25	Add 200µl S1 + 600µl diluent
<b>S3</b>	1.56	Add 200µl S2 + 600µl diluent
<b>S4</b>	0.39	Add 200µl S3 + 600µl diluent
<b>S5</b>	0.10	Add 200µl S4 + 600µl diluent
<b>S6</b>	0.02	Add 200µl S5 + 600µl diluent
<b>S0</b>	0.00	500µl diluent

Related Products: S-1310: ELISA, extraction-free for human serum and plasma samples  
 S-1311: ELISA, extraction-free for rat serum and plasma samples  
 T-4844: purified IgG

This product contains Thimerosal as a preservative and is intended for laboratory use and research purposes only. Purchase of this product does not include authorization to use it in diagnostic or therapeutic applications.

S-1297

EIAH

4.6.2020