



BMA BIOMEDICALS

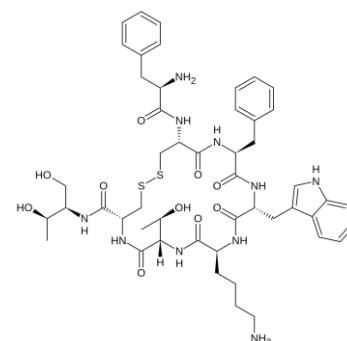


Peninsula Laboratories

S-1275 Octreotide ELISA

Octreotide (brand name **Sandostatin**, among others) is an octapeptide that mimics natural somatostatin pharmacologically, though it is a more potent inhibitor of growth hormone, glucagon, and insulin than the natural hormone [Wikipedia]. Somatostatin (STT) analogs are important active pharmaceutical ingredients for the treatment of various tumors, and endocrine and digestive diseases. STT is one of the main inhibitors of endocrine and exocrine hormone secretion in humans.

This ELISA was developed with serum from rabbits immunized with Octreotide coupled to a carrier protein.



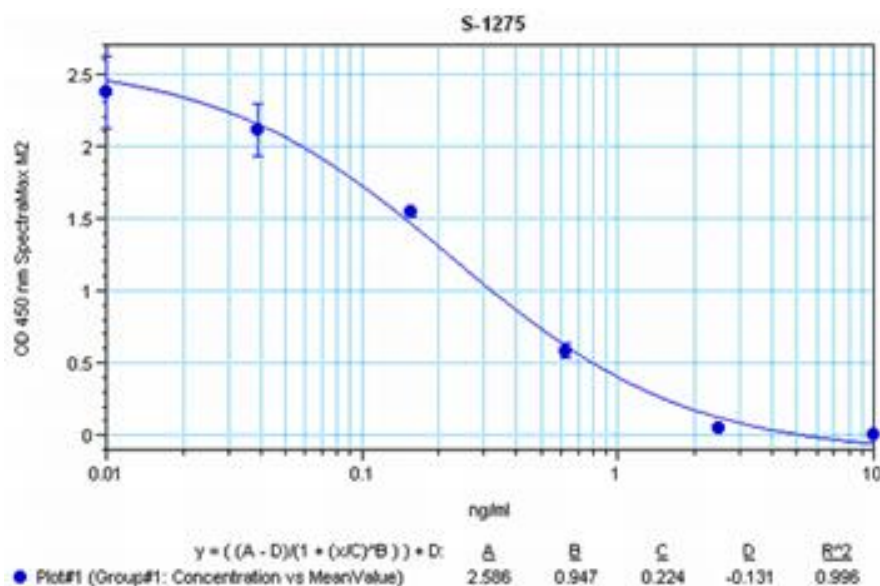
TECHNICAL AND ANALYTICAL CHARACTERISTICS

- Lot number:** A18116
- Host species:** Rabbit IgG
- Quantity:** 96 tests
- Format:** Formulated for extracted samples (EIAH type).
- Shelf-life:** One year from production date. Store refrigerated at 4° - 8°C.
- Applications:** This ELISA has been validated with the included reagents. It is intended to be used with appropriately extracted samples (original protocol I, Std.Ab.Bt). For research use only.
Please see www.bma.ch for protocols and general information.
- Range:** 0-10ng/ml
- Average IC50:** 0.3ng/ml
- Immunogen:** Synthetic peptide H-D-Phe-Cys-Phe-D-Trp-Lys-Thr-Cys-L-threoninol (disulfide bond) coupled to carrier protein.

Cross Reactivity:

Peptide:	%:
Octreotide	100
Somatostatin-14	0
Somatostatin-28	0
Somatostatin Analog, RC-160	0
Somatostatin Analog, (CTOP)	0

Typical titration curve of Octreotide in a competitive ELISA with this antibody:



Suggested Preparation of Standards		
	ng/ml	Range: 0.01 to 10ng/ml
Stock	1000	
S1	10.00	Add 10µl Stock + 990µl diluent
S2	2.50	Add 200µl S1 + 600µl diluent
S3	0.63	Add 200µl S2 + 600µl diluent
S4	0.16	Add 200µl S3 + 600µl diluent
S5	0.04	Add 200µl S4 + 600µl diluent
S6	0.01	Add 200µl S5 + 600µl diluent
S0	0.00	500µl diluent

Related Products:

- T-4582: neat antiserum
- T-4590: diluted antiserum
- T-4874: purified IgG
- S-1341: ELISA, extraction-free for human samples
- S-1342: ELISA, extraction-free for rat samples

This product contains Thimerosal as a preservative and is intended for laboratory use and research purposes only. Purchase of this product does not include authorization to use it in diagnostic or therapeutic applications.

S-1275

EIAH

22.05.2020