



BMA BIOMEDICALS



Peninsula Laboratories

S-1242

C-Peptide (human) ELISA

The connecting peptide, or C-peptide of human proinsulin, is a 31-amino-acid polypeptide that connects insulin's A-chain to its B-chain. In the context of diabetes or hypoglycemia, a measurement of C-peptide blood serum levels can be used to distinguish between different conditions with similar clinical features. In normal tissues, the antigen is found in pancreatic islet β -cells. C-peptide has been found to be a bioactive peptide in its own right, with effects on microvascular blood flow and tissue health.

This ELISA was developed with serum from rabbits immunized with C-Peptide coupled to a carrier protein.

TECHNICAL AND ANALYTICAL CHARACTERISTICS

Lot number:	A12125
Host species:	Rabbit IgG
Quantity:	96 tests
Format:	Formulated for extracted samples (EIAH type).
Shelf-life:	One year from production date. Store refrigerated at 4° - 8°C.
Applications:	This ELISA has been validated with the included reagents. It is intended to be used with appropriately extracted samples (original protocol III, Std.Ab1hr.Bt). For research use only. Please see www.bma.ch for protocols and general information.
Range:	0-10ng/ml
Average IC50:	0.3ng/ml
Immunogen:	Synthetic peptide H-Glu-Ala-Glu-Asp-Leu-Gln-Val-Gly-Gln-Val-Glu-Leu-Gly-Gly-Gly-Pro-Gly-Ala-Gly-Ser-Leu-Gln-Pro-Leu-Ala-Leu-Glu-Gly-Ser-Leu-Gln-OH coupled to carrier protein.

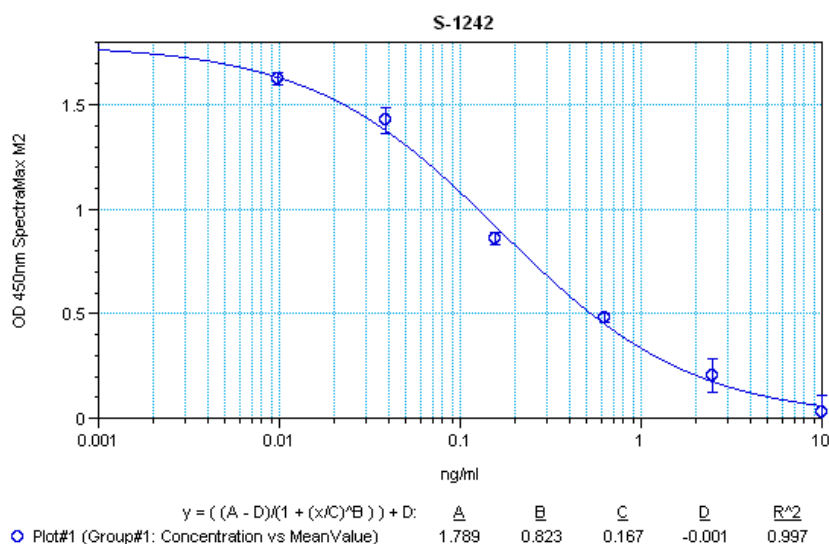
Cross-Reactivity:

PEPTIDE:	%:
C-Peptide (human)	100
Insulin (human)	0
Amylin (free acid) (human)	0
Amylin (free acid) (rat)	0
Amylin (human)	0
α -CGRP (human)	0
α -CGRP (rat)	0
Glucagon (1-29) (human)	0
Pancreatic Polypeptide (rat)	0

Cross-Reactivity (continued):

PEPTIDE:	%:
Somatostatin-14	0
Chromogranin A (264-314) (rat)	0
VIP (human, bovine, porcine, rat)	0

Typical titration curve of C-Peptide in a competitive ELISA with this antibody:



Suggested Preparation of Standards		
	ng/ml	Range: 0.01 to 10ng/ml
Stock	1000	
S1	10.00	Add 10µl Stock + 990µl diluent
S2	2.50	Add 200µl S1 + 600µl diluent
S3	0.63	Add 200µl S2 + 600µl diluent
S4	0.16	Add 200µl S3 + 600µl diluent
S5	0.04	Add 200µl S4 + 600µl diluent
S6	0.01	Add 200µl S5 + 600µl diluent
S0	0.00	500µl diluent

Related Products:

- T-1313: monoclonal mouse anti human C-Peptide
- T-4213: anti C-Peptide (hu), diluted rabbit antiserum
- T-4215: anti C-Peptide (hu), neat rabbit antiserum
- T-5013: anti Insulin (hu), diluted guinea pig antiserum
- T-5014: anti Insulin (hu), purified guinea pig IgG
- T-5015: anti Insulin (hu), neat guinea pig antiserum

This product contains Thimerosal as a preservative and is intended for laboratory use and research purposes only. Purchase of this product does not include authorization to use it in diagnostic or therapeutic applications.

S-1242

EIAH – hu

2.3.2021