



BMA BIOMEDICALS

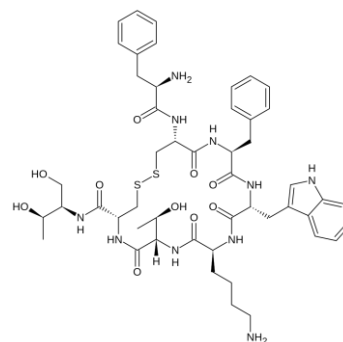


Peninsula Laboratories

T-4874 Rabbit anti Octreotide

Octreotide (brand name **Sandostatin**, among others) is an octapeptide that mimics natural somatostatin pharmacologically, though it is a more potent inhibitor of growth hormone, glucagon, and insulin than the natural hormone [Wikipedia]. Somatostatin (STT) analogs are important active pharmaceutical ingredients for the treatment of various tumors, and endocrine and digestive diseases. STT is one of the main inhibitors of endocrine and exocrine hormone secretion in humans.

This antibody was generated by immunization of rabbits with Octreotide coupled to a carrier protein.



TECHNICAL AND ANALYTICAL CHARACTERISTICS

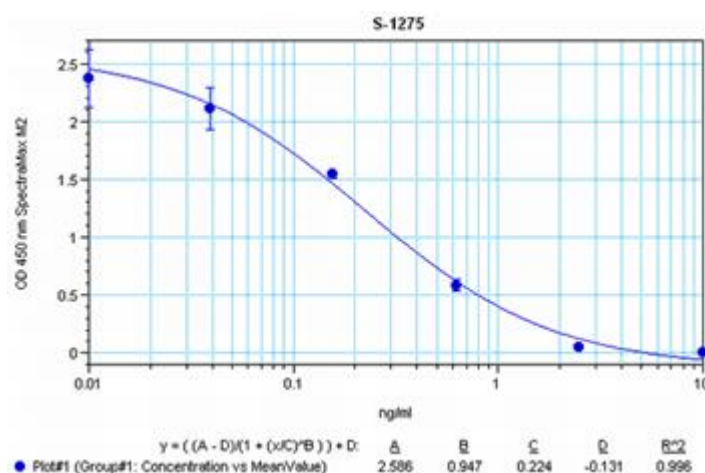
Lot number:	A19PO23048
Host species, isotype:	Rabbit IgG
Quantity:	400µg
Format:	Protein A affinity purified from antiserum, lyophilized, packaged under nitrogen. Reconstitute by adding 0.2ml distilled water. This stock solution contains 2mg/ml IgG, phosphate buffer saline pH 7.4 (PBS), 6mg/ml BSA as a stabilizer, and 0.05% (w/v) ProClin™ 150 as a preservative.
Stability:	Original vial: 1 year at 4° - 8°C from date of delivery. Stock solution and aliquots thereof: at -20°C. Avoid repeated thawing and freezing.
Applications:	Tested in immunohistochemistry (IHC) and in ELISA. Other applications like FACS or Western Blot may work as well. Approximate working dilution for IHC: Paraffin sections: (1:800); Proteinase K pretreatment for antigen retrieval is recommended. Frozen sections: not tested. Optimal dilutions should be determined by the end user. Please see www.bma.ch for protocols and general information.

Immunogen: Synthetic peptide H-Tyr-Pro-Ser-Lys-Pro-Asp-Asn-Pro-Gly-Glu-Asp-AlaPro-Ala-Glu-Asp-Met-Ala-Arg-Tyr-Tyr-Ser-Ala-Leu-Arg-His-Tyr-Ile-AsnLeu-Ile-Thr-Arg-Gln-Arg-Tyr-NH₂ coupled to carrier protein.

Cross Reactivity:

Peptide:	%:
Octreotide	100
Somatostatin-14	0
Somatostatin-28	0
Somatostatin Analog, RC-160	0
Somatostatin Analog, (CTOP)	0

Typical titration curve of Octreotide in a competitive ELISA with this antibody:



Related Products:

- T-4582: anti Octreotide, neat antiserum
- T-4590: anti Octreotide, diluted antiserum
- S-1275: ELISA, high sensitivity for extracted samples
- S-1341: ELISA, extraction-free for human samples
- S-1342: ELISA, extraction-free for rat samples

This product contains ProClin™ 150 as a preservative and is intended for laboratory use and research purposes only. Purchase of this product does not include authorization to use it in diagnostic or therapeutic applications.

T-4874

08.06.2023