



BMA BIOMEDICALS



Peninsula Laboratories

---

## T-4157

### Rabbit anti human Amylin (25-37) [UniProt: P10997]

Amylin (also known as islet amyloid polypeptide, IAPP) in its full length is a 37 amino acid peptide hormone with a disulfide bridge between cysteine residues 2 and 7. Both the amidated C-terminus and the disulfide bridge are necessary for the full biological activity of Amylin. It is co-secreted with insulin from the pancreatic  $\beta$ -cells and plays an important role in the glycemic control, regulating it by slowing gastric emptying and promoting satiety. It is also involved in bone metabolism, along with the related peptides calcitonin and calcitonin gene related peptide, CGRP.

This antibody was generated by immunization of rabbits with Amylin (25-37) coupled to a carrier protein.

---

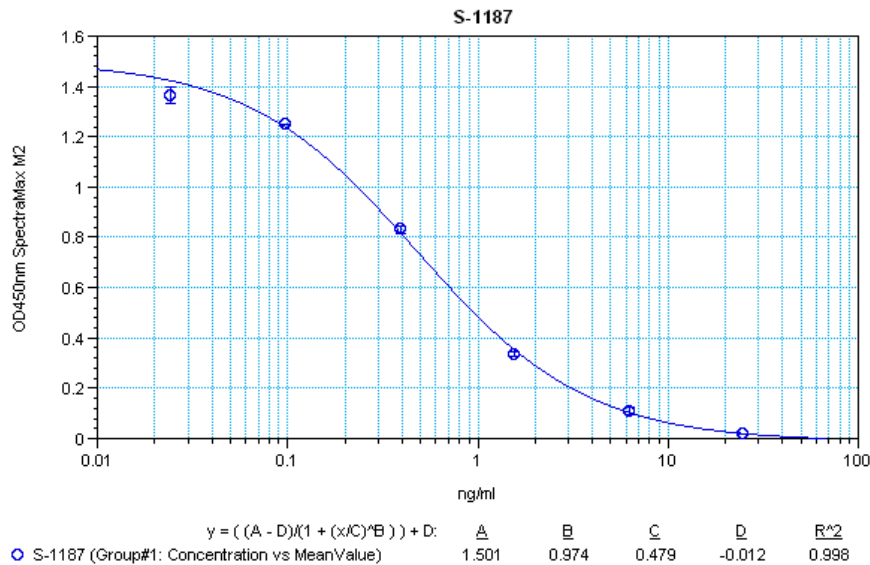
### TECHNICAL AND ANALYTICAL CHARACTERISTICS

<b>Lot number:</b>	A18PO2042
<b>Host species:</b>	Rabbit IgG
<b>Quantity:</b>	400 $\mu$ g
<b>Format:</b>	Protein A affinity purified from antiserum, lyophilized, packaged under nitrogen. Reconstitute by adding 0.4ml distilled water. This stock solution contains 1mg/ml IgG, phosphate buffered saline pH 7.2 (PBS), 6mg/ml bovine serum albumin (BSA) as a stabilizer and 0.05% ProClin 150 as a preservative.
<b>Stability:</b>	Original vial: at least one year at 4 $^{\circ}$ - 8 $^{\circ}$ C from date of delivery. Minimize repeated freezing and thawing by freezing aliquots at -20 $^{\circ}$ C or below.
<b>Applications:</b>	This antibody has been tested and validated in ELISA against Amylin and in immunohistochemistry (IHC). Other applications like FACS or Western Blot may work as well. Optimal dilutions should be determined by the end user. Please see <a href="http://www.bma.ch">www.bma.ch</a> for protocols and general information.
<b>Immunogen:</b>	Synthetic peptide H-Ala-Ile-Leu-Ser-Ser-Thr-Asn-Val-Gly-Ser-Asn-Thr-Tyr-NH <sub>2</sub> coupled to carrier protein.

#### Cross-Reactivity:

PEPTIDE:	%:
Amylin (25-37)	100
Amylin (human)	100
Amylin (rat)	100
Amylin (free acid) (human)	0.35
Amylin (1-13) (human)	0
Amylin (14-24) (human)	0
$\alpha$ -CGRP (human)	0
Glucagon (1-29) (human, bovine, porcine)	0

Typical titration curve of full length human Amylin (ELISA kit S-1187):



Related Products: S-1186: ELISA, high sensitivity for extracted mouse / rat samples.  
 S-1187: ELISA, high sensitivity for extracted human samples.  
 S-1413: ELISA, extraction-free for mouse / rat samples  
 S-1420: ELISA, extraction-free for human serum and plasma samples  
 T-4141: anti cat amylin, purified rabbit IgG.  
 T-4142: anti cat amylin, neat antiserum.  
 T-4145: anti mouse / rat amylin, purified rabbit IgG  
 T-4146: anti mouse / rat amylin, neat antiserum.  
 T-4149: anti human amylin, purified rabbit IgG.  
 T-4150: anti human amylin, neat antiserum.  
 T-4153: anti human amylin (1-13), purified rabbit IgG.  
 T-4154: anti human amylin (1-13), neat antiserum.  
 T-4158: anti human amylin (25-37), neat antiserum.

This product contains ProClin 150 as a preservative and is intended for laboratory use and research purposes only. Purchase of this product does not include authorization to use it in diagnostic or therapeutic applications.

T-4157

rabbit IgG - hu

13.11.2020