



BMA BIOMEDICALS

BMA BIOMEDICALS
Rheinstrasse 28-32
CH-4302 Augst (Switzerland)
Phone: +41 61 811 6222
Fax: +41 61 811 6006
info@bma.ch
www.bma.ch

Monoclonal Antibody to Porcine Albumin

Marker for the major plasma protein; UniProt: P08835

Monoclonal antibody PAL17 reacts specifically with pig albumin, not with albumin from other mammalian species. Albumin has been listed as a stem cell marker for hepatocytes by the U.S. National Institutes of Health.

Serum albumin is a globular non-glycosylated protein of 65-70kDa molecular weight, well water-soluble and heat-intolerant. It mainly functions as a regulator of colloidal osmotic pressure and as a transport protein for molecules that are poorly water-soluble, and for zinc. Serum albumin is the most abundant of all plasma proteins. Albumin consists of three homologous domains that mainly contain alpha-helices, porcine albumin contains seventeen disulfide bonds altogether.

This antibody was produced serum-free, without fetal calf serum.

Product number: T-3534

Clone: PAL17

Lot: 01PO1604

TECHNICAL AND ANALYTICAL CHARACTERISTICS:

Host species, isotype: Mouse IgG1, kappa

Quantity: 0.2mg

Format: Affinity purified from cell culture supernatant, lyophilized.
Reconstitute by adding 0.5ml distilled water. This stock solution contains 0.4mg/ml IgG, phosphate buffered saline pH 7.2 (PBS), 5mg/ml bovine serum albumin (BSA) as a stabilizer and 0.05% (v/v) Kathon CG as a preservative.

Stability: Original vial: 1 year at 4° - 8°C. Avoid repeated thawing and freezing of the reconstituted antibody.

Applications: Tested for immunohistochemistry (IHC), Western Blot and ELISA, other applications not yet tested.

Approximate working dilutions:

IHC, frozen sections: 0.1µg/ml (1:4000)

IHC, paraffin sections: 0.5µg/ml (1:800); microwave pretreatment for antigen retrieval is recommended.

Optimal dilutions should be determined by the end user.

Please see www.bma.ch for protocols and general information.

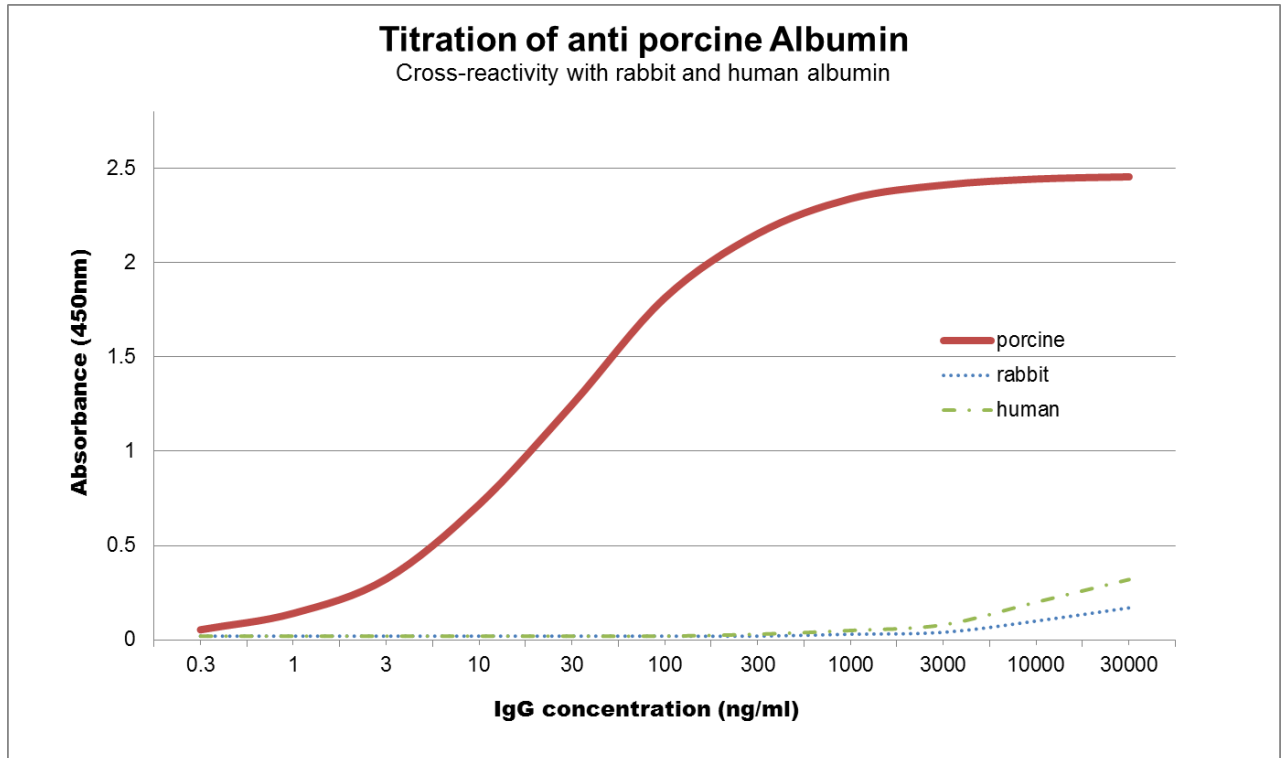
Immunogen: Porcine kidney extract.

Antigen, epitope: Immunoprecipitation and subsequent identification by nanoLC-ESI-MS/MS identified the antigen as porcine albumin. The epitope has not been further characterized.

Antigen distribution: **Tissue sections:** Hepatocytes of the liver are stained positive, and albumin in the blood vessels of all organs.

Specificity: Porcine Albumin

Other species: Western Blot analysis indicates no detectable reactivity with human, horse, rat, goat, bovine, sheep or donkey albumin. Titration of the antibody against purified porcine, human or rabbit albumin confirms minimal cross-reactivity.



This product contains Kathon as a preservative and is intended for *in vitro* laboratory use and research purposes only. Purchase of this product does not include authorization to reverse engineer any part thereof, nor to use it in diagnostic or therapeutic applications.