



BMA

BMA BIOMEDICALS



Peninsula Laboratories

Tirzepatide ELISA

Tirzepatide is a dual active agonist of both Glucagon-like Peptide-1 (GLP-1) and Glucose-dependent Insulinotropic Polypeptide (GIP) receptors. It acts as an incretin hormone with important effects on glycemic control and body weight regulation, particularly relevant in people with Type-II Diabetes (T2D). Tirzepatide is used as active component of Mounjaro®.

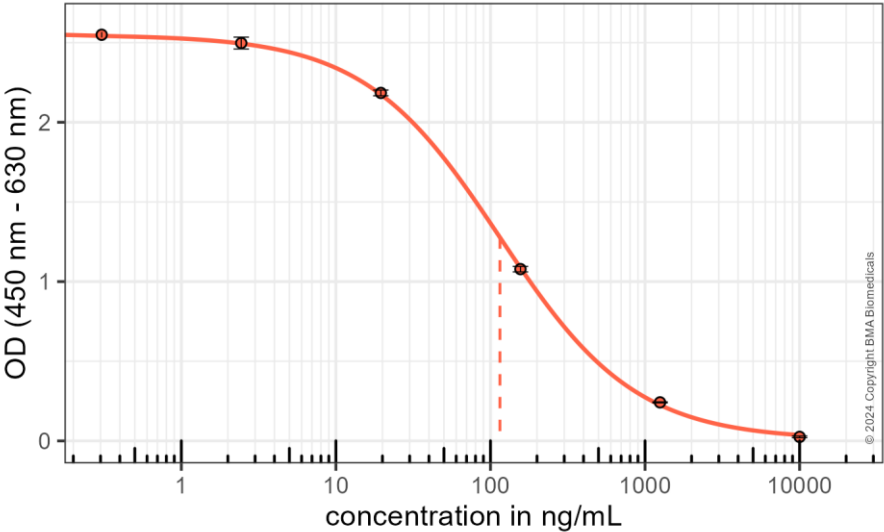
This ELISA was developed with serum from rabbits immunized with Tirzepatide coupled to a carrier protein.

TECHNICAL AND ANALYTICAL CHARACTERISTICS

| | |
|---------------------------------|--|
| Product number: | S-1552 (Lot A18PO24077) |
| Host species: | Rabbit IgG |
| Quantity: | 96 tests |
| Format: | Formulated for extracted samples (EIAH type). |
| Shelf-life: | One year from production date. Store refrigerated at 4° - 8°C. |
| Applications: | This ELISA has been validated with the included reagents. It is intended to be used with appropriately extracted samples. For research use only. Please see www.bma.ch for protocols and general information. |
| Std Range: | 0 - 10 µg/ml |
| Linear Range: | 15 - 1000 ng/ml |
| Lower LOD: | 2.9 ng/ml |
| Average IC₅₀: | 115 ng/ml |
| Immunogen: | Synthetic peptide H-Tyr-{Aib}-Glu-Gly-Thr-Phe-Thr-Ser-Asp-Tyr-Ser-Ile-{Aib}-Leu-Asp-Lys-Ile-Ala-Gln-{diacid-gamma-Glu-(AEEA)2-Lys}-Ala-Phe-Val-Gln-Trp-Leu-Ile-Ala-Gly-Gly-Pro-Ser-Ser-Gly-Ala-Pro-Pro-Pro-Ser-NH ₂ coupled to carrier protein. |
| Protein database: | <u>Tirzepatide</u> |
| Cross-Reactivity: | |
| PEPTIDE: | % |
| Tirzepatide | 100 |
| Semaglutide | 0 |

Typical titration curve of Tirzepatide in a competitive ELISA with this antibody:

S-1552 (10 minutes color reaction)



| Suggested Preparation of Standards | | |
|------------------------------------|----------|--------------------------------|
| | ng/ml | Range: 0.31 - 10'000 ng/ml |
| Stock | 10'000.0 | |
| S1 | 10'000.0 | 1000 µl Stock |
| S2 | 1250.0 | Add 125 µl S1 + 875 µl diluent |
| S3 | 156.25 | Add 125 µl S2 + 875 µl diluent |
| S4 | 19.53 | Add 125 µl S3 + 875 µl diluent |
| S5 | 2.44 | Add 125 µl S4 + 875 µl diluent |
| S6 | 0.31 | Add 125 µl S5 + 875 µl diluent |
| S0 | 0.00 | 1000 µl diluent |

This product contains ProClin™ 150 as a preservative and is intended for laboratory use and research purposes only. Not for diagnostic or therapeutic applications.

S-1552

26.06.2024