



BMA BIOMEDICALS



Peninsula Laboratories

S-1542

D2A-Ala Peptide ELISA

D2A-Ala is a synthetic peptide that has been created by introducing mutations in the original D2A sequence of human urokinase receptor (uPAR). It displays strong anti-tumoural properties *in vitro*, inhibiting EGF-induced chemotaxis, by preventing its phosphorylation. Also, D2A-Ala has a role in the proliferation of a human fibrosarcoma cell line, HT 1080, as well as a human colorectal adenocarcinoma cell line, HT 29.

This ELISA was developed with serum from rabbits immunized with D2A-Ala coupled to a carrier protein.

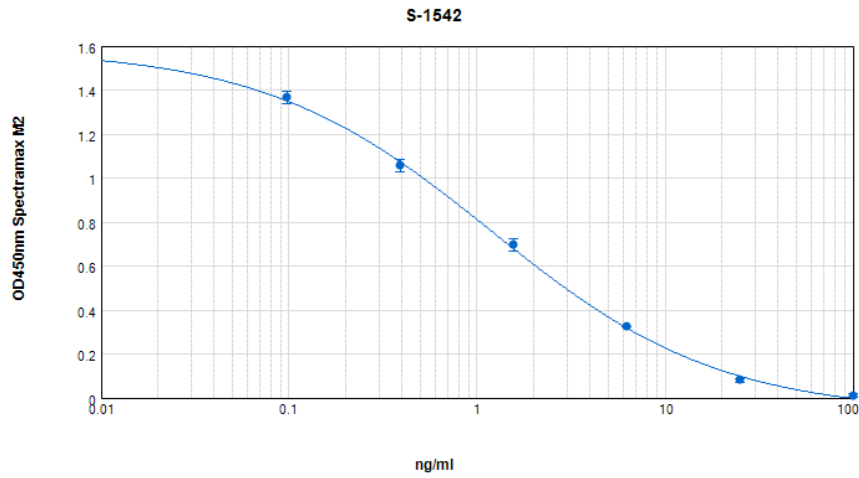
TECHNICAL AND ANALYTICAL CHARACTERISTICS

Lot number:	n/a
Host species:	Rabbit IgG
Quantity:	96 tests
Format:	Formulated for extracted samples (EIAH type).
Shelf-life:	One year from production date. Store refrigerated at 4° - 8°C.
Applications:	This ELISA has been validated with the included reagents. It is intended to be used with appropriately extracted samples (original protocol III, Std.Ab1hr.Bt). For research use only. Please see www.bma.ch for protocols and general information.
Range:	0-100ng/ml
Average IC50:	1.2ng/ml
Immunogen:	Synthetic peptide H-Ile-Gln-Glu-Gly-Ala-Ala-Gly-Arg-Pro-Lys-Asp-Asp-Arg-OH coupled to carrier protein.

Cross-Reactivity:

PEPTIDE:	%:
D2A-Ala Peptide	100

Typical titration curve of D2A-Ala in a competitive ELISA with this antibody:



Suggested Preparation of Standards		
	ng/ml	Range: 0.10 to 100ng/ml
Stock	1000	
S1	100.00	Add 100µl Stock + 900µl diluent
S2	25.00	Add 200µl S1 + 600µl diluent
S3	6.25	Add 200µl S2 + 600µl diluent
S4	1.56	Add 200µl S3 + 600µl diluent
S5	0.39	Add 200µl S4 + 600µl diluent
S6	0.10	Add 200µl S5 + 600µl diluent
S0	0.00	500µl diluent

This product contains Thimerosal as a preservative and is intended for laboratory use and research purposes only. Purchase of this product does not include authorization to use it in diagnostic or therapeutic applications.

S-1542

EIAH

1.03.2021