



BMA BIOMEDICALS



Peninsula Laboratories

---

## S-1540

### Proline-rich peptide 1 (PRP-1) pro-Vasopressin (150-164) (human) ELISA

Human PRP-1 is one of five peptides that belongs to a new family of peptide neurohormones composed of 10-15 amino acid residues. PRPs were discovered and isolated from the neurosecretory granules of the bovine and human neurohypophysis. These peptides contain a high percentage of proline residues and have therefore been designated PRPs (proline-rich peptides). Studies have shown that PRP-1s produced by neurosecretory cells in the hypothalamus have many beneficial biological effects including immunoregulatory, haematopoietic, antimicrobial and anti-neurodegenerative properties.

This ELISA was developed with serum from rabbits immunized with Proline-rich peptide 1 (PRP-1) pro-Vasopressin (150-164) coupled to a carrier protein.

---

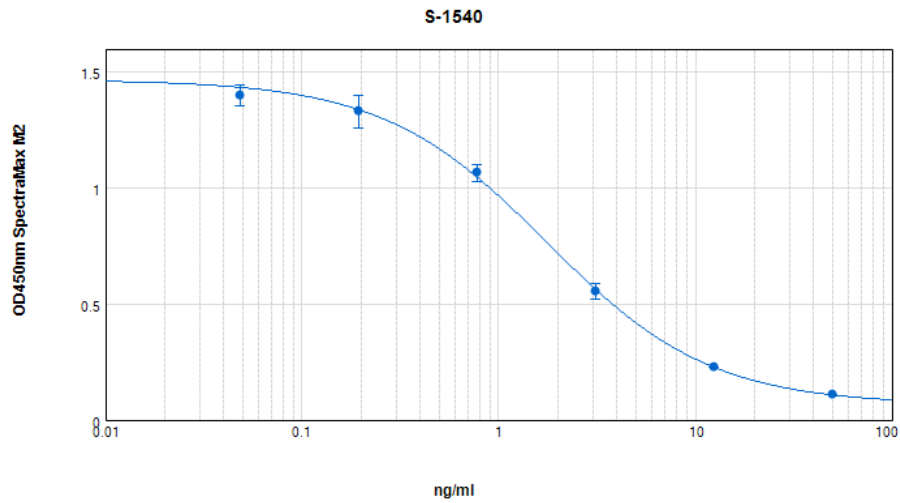
#### TECHNICAL AND ANALYTICAL CHARACTERISTICS

<b>Lot number:</b>	n/a
<b>Host species:</b>	Rabbit IgG
<b>Quantity:</b>	96 tests
<b>Format:</b>	Formulated for extracted samples (EIAH type).
<b>Shelf-life:</b>	One year from production date. Store refrigerated at 4° - 8°C.
<b>Applications:</b>	This ELISA has been validated with the included reagents. It is intended to be used with appropriately extracted samples (original protocol III, Std.Ab1hr.Bt). For research use only. Please see <a href="http://www.bma.ch">www.bma.ch</a> for protocols and general information.
<b>Range:</b>	0-50ng/ml
<b>Average IC50:</b>	2ng/ml
<b>Immunogen:</b>	Synthetic peptide H- Ala-Gly-Ala-Pro-Glu-Pro-Phe-Glu-Pro-Ala-Gln-Pro-Asp-Ala-Tyr-OH coupled to carrier protein.

#### Cross-Reactivity:

PEPTIDE:	%:
Proline-rich peptide 1 (PRP-1) pro-Vasopressin (150-164) (human)	100

Typical titration curve of Proline-rich peptide 1 (PRP-1) pro-Vasopressin (150-164) in a competitive ELISA with this antibody:



<b>Suggested Preparation of Standards</b>		
	<b>ng/ml</b>	Range: 0.05 to 50ng/ml
<b>Stock</b>	1000	
<b>S1</b>	50.00	Add 50µl Stock + 950µl diluent
<b>S2</b>	12.50	Add 200µl S1 + 600µl diluent
<b>S3</b>	3.13	Add 200µl S2 + 600µl diluent
<b>S4</b>	0.78	Add 200µl S3 + 600µl diluent
<b>S5</b>	0.20	Add 200µl S4 + 600µl diluent
<b>S6</b>	0.05	Add 200µl S5 + 600µl diluent
<b>S0</b>	0.00	500µl diluent

---

This product contains Thimerosal as a preservative and is intended for laboratory use and research purposes only. Purchase of this product does not include authorization to use it in diagnostic or therapeutic applications.

S-1540

EIAH

1.03.2021