



BMA BIOMEDICALS



Peninsula Laboratories

---

**S-1535**

## **Angiotensin I (1-9) ELISA**

Angiotensin I (1-9) is produced from proangiotensin by the action of angiotensin converting enzyme 2 (ACE2). It is known to have protective effects on cardiac and vascular remodeling. Angiotensin I (1-9) stimulates the secretion of atrial natriuretic peptide (ANP). This human angiotensin peptide is analogous to horse, sheep, pig, and rat angiotensin.

This ELISA was developed with serum from rabbits immunized with Angiotensin I (1-9) coupled to a carrier protein.

---

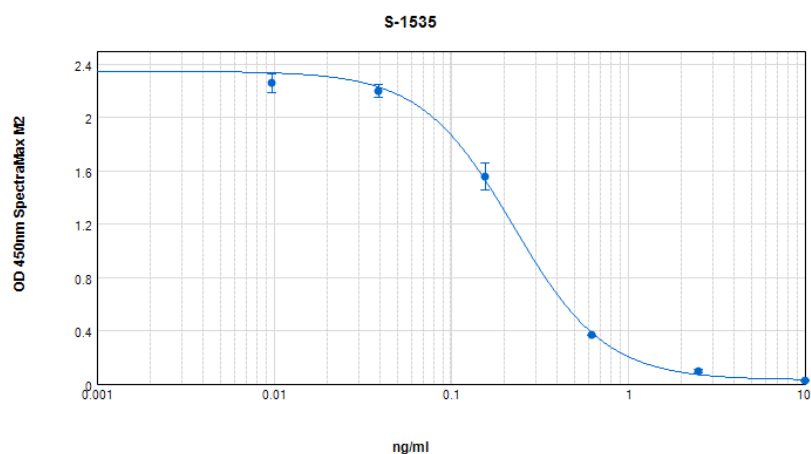
### **TECHNICAL AND ANALYTICAL CHARACTERISTICS**

<b>Lot number:</b>	A16732
<b>Host species:</b>	Rabbit IgG
<b>Quantity:</b>	96 tests
<b>Format:</b>	Formulated for extracted samples (EIAH type).
<b>Shelf-life:</b>	One year from production date. Store refrigerated at 4° - 8°C.
<b>Applications:</b>	This ELISA has been validated with the included reagents. It is intended to be used with appropriately extracted samples (original protocol III, Std.Ab1hr.Bt). For research use only. Please see <a href="http://www.bma.ch">www.bma.ch</a> for protocols and general information.
<b>Range:</b>	0-10ng/ml
<b>Average IC50:</b>	0.2ng/ml
<b>Immunogen:</b>	Synthetic peptide H-Asp-Arg-Val-Tyr-Ile-His-Pro-Phe-His-OH coupled to carrier protein.

#### **Cross Reactivity:**

<b>Peptide:</b>	<b>%:</b>
Angiotensin I (1-9)	100
Angiotensin I	0
Angiotensin II	0
Angiotensin III	0
Angiotensin I/II (1-7)	0
Angiotensin I/II (1-5)	0
Angiotensin A	0
Angiotensin-12 (human)	0
Angiotensin-12 (rat)	0

Typical titration curve of Angiotensin I (1-9) in a competitive ELISA with this antibody:



Suggested Preparation of Standards		
	ng/ml	Range: 0.01 to 10ng/ml
<b>Stock</b>	1000	
<b>S1</b>	10.00	Add 10µl Stock + 990µl diluent
<b>S2</b>	2.50	Add 200µl S1 + 600µl diluent
<b>S3</b>	0.63	Add 200µl S2 + 600µl diluent
<b>S4</b>	0.16	Add 200µl S3 + 600µl diluent
<b>S5</b>	0.04	Add 200µl S4 + 600µl diluent
<b>S6</b>	0.01	Add 200µl S5 + 600µl diluent
<b>S0</b>	0.00	500µl diluent

Related Products: S-1343: ELISA, high sensitivity for extracted samples (1-12)(hu)  
S-1330: ELISA, high sensitivity for extracted samples (1-7)  
S-1188: ELISA, high sensitivity for extracted samples (1-10)  
T-4166: anti Angiotensin I, neat antiserum, host: rabbit  
T-4165: anti Angiotensin I, purified IgG, host: rabbit  
T-4985: anti Angiotensin I (1-9), lyophilized antiserum for ELISA

This product contains Thimerosal as a preservative and is intended for laboratory use and research purposes only. Purchase of this product does not include authorization to use it in diagnostic or therapeutic applications.

S-1535

EIAH

8.9.2020