



BMA BIOMEDICALS



Peninsula Laboratories

---

## S-1531

### Apelin-36 (human) ELISA [UniProt: Q9ULZ1]

Apelin-36 is the full-length mature peptide produced from the translated 77 amino acid prepropeptide. The apelinins act primarily in the peripheral and central nervous system, playing important roles in regulating cardiovascular function, fluid homeostasis, hypertension, and insulin sensitivity.<sup>2</sup> Apelin-36 is a less potent agonist of APJ system than either apelin-17 or apelin-13. Apelin-36 potentially inhibits HIV-1 entry into cells expressing APJ and CD4, limiting HIV infection.

This ELISA was developed with serum from rabbits immunized with Apelin-36 coupled to a carrier protein.

---

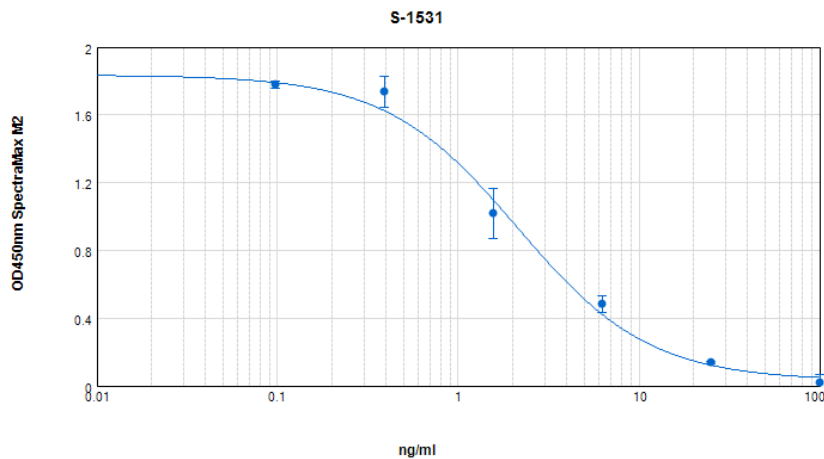
#### TECHNICAL AND ANALYTICAL CHARACTERISTICS

<b>Lot number:</b>	A16585
<b>Host species:</b>	Rabbit IgG
<b>Quantity:</b>	96 tests
<b>Format:</b>	Formulated for extracted samples (EIAH type).
<b>Shelf-life:</b>	One year from production date. Store refrigerated at 4° - 8°C.
<b>Applications:</b>	This ELISA has been validated with the included reagents. It is intended to be used with appropriately extracted samples (original protocol III, Std.Ab1hr.Bt). For research use only. Please see <a href="http://www.bma.ch">www.bma.ch</a> for protocols and general information.
<b>Range:</b>	0-100ng/ml
<b>Average IC50:</b>	2.0ng/ml
<b>Immunogen:</b>	Synthetic peptide H-Leu-Val-Gln-Pro-Arg-Gly-Ser-Arg-Asn-Gly-Pro-Gly-Pro-Trp-Gln-Gly-Gly-Arg-Arg-Lys-Phe-Arg-Arg-Gln-Arg-Pro-Arg-Leu-Ser-His-Lys-Gly-Pro-Met-Pro-Phe-OHcoupled to carrier protein.

#### Cross-Reactivity:

PEPTIDE:	%:
Apelin-36 (human)	100

Typical titration curve of Apelin-36 in a competitive ELISA with this antibody:



Suggested Preparation of Standards		
	ng/ml	Range: 0.10 to 100ng/ml
<b>Stock</b>	1000	
<b>S1</b>	100.00	Add 100µl Stock + 900µl diluent
<b>S2</b>	25.00	Add 200µl S1 + 600µl diluent
<b>S3</b>	6.25	Add 200µl S2 + 600µl diluent
<b>S4</b>	1.56	Add 200µl S3 + 600µl diluent
<b>S5</b>	0.39	Add 200µl S4 + 600µl diluent
<b>S6</b>	0.10	Add 200µl S5 + 600µl diluent
<b>S0</b>	0.00	500µl diluent

Related Products:

S-1505: ELISA, high sensitivity for extracted samples (16)(hu)  
 S-1416: ELISA, high sensitivity for extracted samples (13) (hu)  
 S-1445: ELISA, high sensitivity for extracted samples (Pyr1-13)  
 T-4825: Rabbit anti Apelin-17, neat antiserum  
 T-4824: Rabbit anti Apelin-17, purified IgG

---

This product contains Thimerosal as a preservative and is intended for laboratory use and research purposes only. Purchase of this product does not include authorization to use it in diagnostic or therapeutic applications.

S-1531

EIAH

1.3.2021