



BMA BIOMEDICALS



Peninsula Laboratories

S-1517

Adropin (34-76) (human, mouse, rat) ELISA [UniProt: Q6UWT2, Q8K1D8, D3ZUG5]

Adropin is a secreted factor involved in energy homeostasis and lipid metabolism. It is encoded by the energy homeostasis associated gene (Enho) and is expressed in liver and brain. In diet-induced obesity (DIO) mice Adropin (34-76) attenuated hepatosteatosis and insulin resistance independently of adiposity or food intake. Additionally, adropin could be a regulator of endothelial function.

This ELISA was developed with serum from rabbits immunized with Adropin (34-76) to a carrier protein.

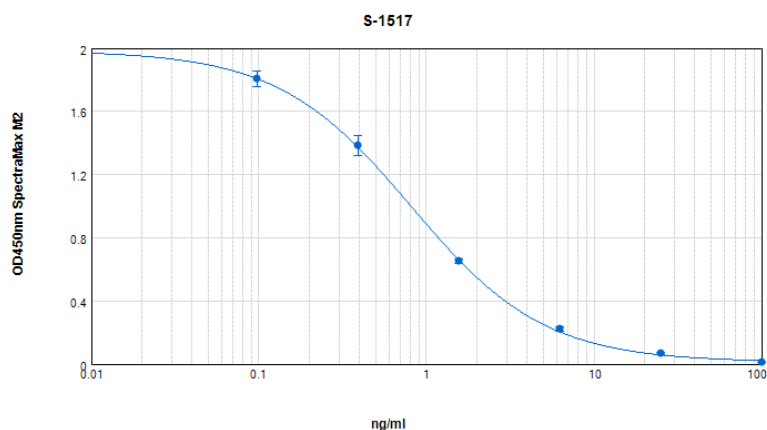
TECHNICAL AND ANALYTICAL CHARACTERISTICS

Lot number:	A18162
Host species:	Rabbit IgG
Quantity:	96 tests
Format:	Extraction-free kit for mouse serum or plasma (EIAS type).
Shelf-life:	One year from production date. Store refrigerated at 4° - 8°C.
Applications:	This ELISA has been validated with the included reagents. It is intended to be used with samples of mouse origin (original protocol V, Ab1hr.Std2hr.BtON). For research use only. Please see www.bma.ch for protocols and general information.
Range:	0-100ng/ml
Average IC50:	0.8ng/ml
Immunogen:	Synthetic peptide H-Cys-His-Ser-Arg-Ser-Ala-Asp-Val-Asp-Ser-Leu-Ser-Glu-Ser-Ser-Pro-Asn-Ser-Ser-Pro-Gly-Pro-Cys-Pro-Glu-Lys-Ala-Pro-Pro-Pro-Gln-Lys-Pro-Ser-His-Glu-Gly-Ser-Tyr-Leu-Leu-Gln-Pro-OH; Disulfide bond Cys34 - Cys56 coupled to a carrier protein.

Cross-Reactivity:

PEPTIDE:	%:
Adropin (34-76) (human mouse, rat)	100

Typical titration curve of Adropin (34-76) in a competitive ELISA with this antibody:



Suggested Preparation of Standards		
	ng/ml	Range: 0.10 to 100ng/ml
Stock	1000	
S1	100.00	Add 100µl Stock + 900µl diluent
S2	25.00	Add 200µl S1 + 600µl diluent
S3	6.25	Add 200µl S2 + 600µl diluent
S4	1.56	Add 200µl S3 + 600µl diluent
S5	0.39	Add 200µl S4 + 600µl diluent
S6	0.10	Add 200µl S5 + 600µl diluent
S0	0.00	500µl diluent

Related Products: S-1437: ELISA, extraction-free for serum and plasma samples
S-1385: ELISA, high sensitivity for extracted samples

This product contains Thimerosal as a preservative and is intended for laboratory use and research purposes only. Purchase of this product does not include authorization to use it in diagnostic or therapeutic applications.

S-1517

EIAS

1.3.2021