



BMA BIOMEDICALS



Peninsula Laboratories

S-1508

ELABELA (human) ELISA [UniProt: X5D2P3]

ELABELA is a 32-amino acid peptide hormone that binds to the Apelin receptor. It bears 2 conserved di-arginine motifs (R31/R32 and R42/R43) suggesting that it may be further processed by Furin-like endopeptidases. Its function is crucial for heart development during embryogenesis and it needs to be secreted to become active since deletion of 7 residues in its signal peptide causes a complete loss-of-function in zebrafish.

This ELISA was developed with serum from rabbits immunized with ELABELA coupled to a carrier protein.

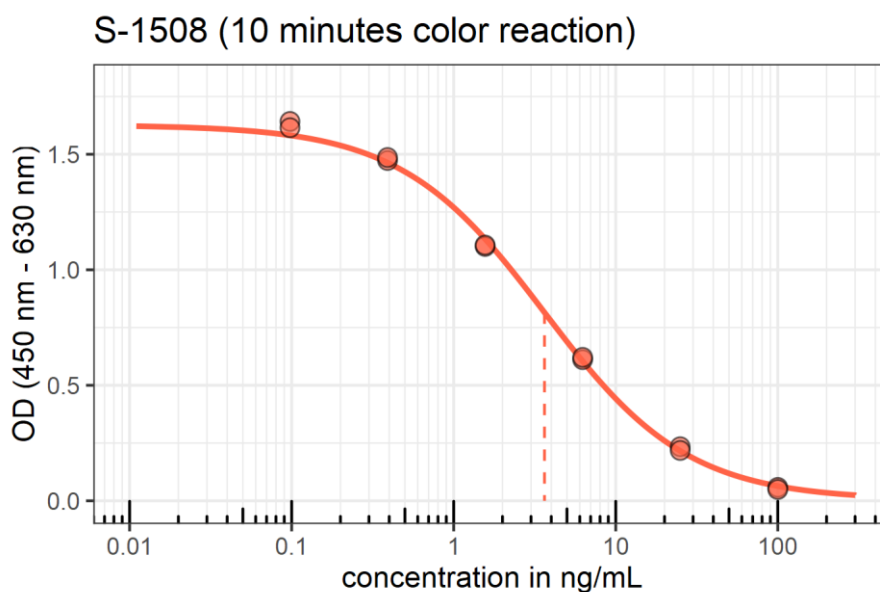
TECHNICAL AND ANALYTICAL CHARACTERISTICS

Lot number:	A18PO22032
Host species:	Rabbit IgG
Quantity:	96 tests
Format:	Formulated for extracted samples (EIAH type).
Shelf-life:	One year from production date. Store refrigerated at 4° - 8°C.
Applications:	This ELISA has been validated with the included reagents. It is intended to be used with appropriately extracted samples (original protocol III, Std.Ab1hr.Bt). For research use only. Please see www.bma.ch for protocols and general information.
Range:	0-100 ng/ml
Average IC50:	3.6 ng/ml
Immunogen:	Synthetic peptide H-Gln-Arg-Pro-Val-Asn-Leu-Thr-Met-Arg-Arg-Lys-Leu-Arg-Lys-His-Asn-Cys-Leu-Gln-Arg-Arg-Cys-Met-Pro-Leu-His-Ser-Arg-Val-Pro-Phe-Pro-OH, (disulfide bridge), coupled to carrier protein.

Cross-Reactivity:

PEPTIDE:	%:
ELABELA (human)	100
ELABELA (rat)	0.1
Apelin-13	0
Apelin-17	0
(Pyr-1) Apelin-13	0

Typical titration curve of Elabela in a competitive ELISA with this antibody:



Suggested Preparation of Standards		
	ng/ml	Range: 0.10 to 100ng/ml
Stock	1000	
S1	100.00	Add 100µl Stock + 900µl diluent
S2	25.00	Add 200µl S1 + 600µl diluent
S3	6.25	Add 200µl S2 + 600µl diluent
S4	1.56	Add 200µl S3 + 600µl diluent
S5	0.39	Add 200µl S4 + 600µl diluent
S6	0.10	Add 200µl S5 + 600µl diluent
S0	0.00	500µl diluent

Related Products:

S-1543: ELISA, high sensitivity for extracted samples (ms)
 T-4968: anti ELABELA, lyophilized antiserum for ELISA (rt)
 S-1506: ELISA, high sensitivity for extracted samples (rt)
 T-4881: anti ELABELA, neat antiserum (ms)
 T-4970: anti ELABELA, lyophilized antiserum for ELISA (hu)

This product contains Thimerosal as a preservative and is intended for laboratory use and research purposes only. Purchase of this product does not include authorization to use it in diagnostic or therapeutic applications.

S-1508

EIAH – hu

16.03.2022