



BMA BIOMEDICALS



Peninsula Laboratories

S-1502 Liraglutide ELISA

Liraglutide is an acylated glucagon-like peptide-1 (GLP-1) agonist, derived from human GLP-1-(7-37), a less common form of endogenous GLP-1. It reduces meal-related hyperglycemia, delaying gastric emptying, and suppressing prandial glucagon secretion. Liraglutide is sold as a medication used to treat diabetes mellitus type 2 and obesity.

The prolonged action of liraglutide (as compared to endogenous GLP-1) is achieved by attaching a fatty acid molecule at one position of the GLP-1-(7-37) molecule, enabling it to both self-associate and bind to albumin within the subcutaneous tissue and bloodstream. The active GLP-1 is then released from albumin at a slow, consistent rate.

This ELISA was developed with serum from rabbits immunized with Liraglutide coupled to a carrier protein.

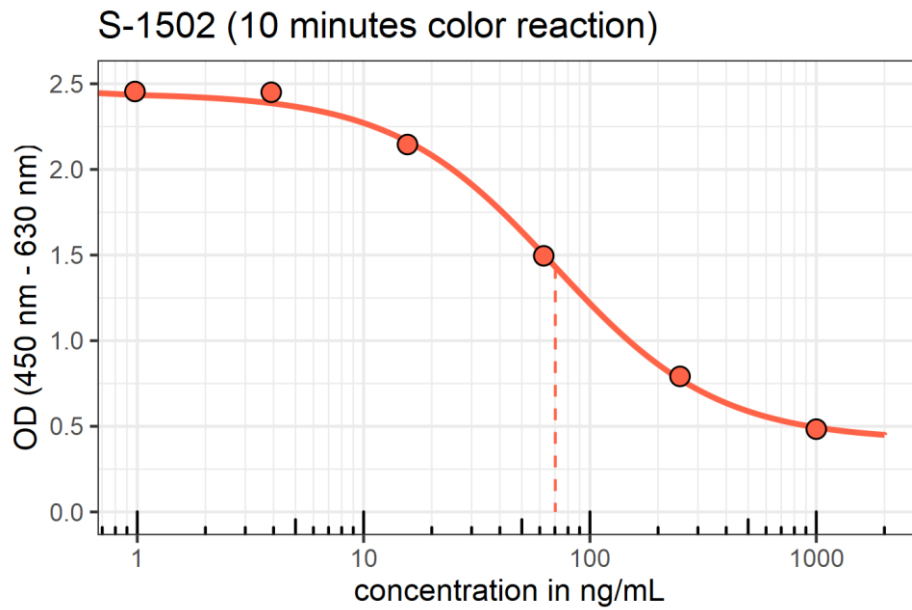
TECHNICAL AND ANALYTICAL CHARACTERISTICS

Lot number:	A19PO22092
Host species:	Rabbit IgG
Quantity:	96 tests
Format:	Formulated for extracted samples (EIAH type).
Shelf-life:	One year from production date. Store refrigerated at 4° - 8°C.
Applications:	This ELISA has been validated with the included reagents. It is intended to be used with appropriately extracted samples with the enclosed protocol. For research use only. Please see www.bma.ch for protocols and general information.
Range:	0-1000ng/ml
Average IC50:	70.8ng/ml
Immunogen:	Synthetic peptide H-His-Ala-Glu-Gly-Thr-Phe-Thr-Ser-Asp-Val-Ser-Ser-Tyr-Leu-Glu-Gly-Gln-Ala-Ala-Lys-(γ -Glu-palmitoyl)-Glu-Phe-Ile-Ala-Trp-Leu-Val-Arg-Gly-Arg-Gly-OH coupled to carrier protein.

Cross-Reactivity:

Peptide	%
Liraglutide	100

Typical titration curve of Liraglutide in a competitive ELISA with this antibody:



Suggested Preparation of Standards		
	ng/ml	Range: 0.98 to 1000ng/ml
Stock	1000	
S1	1000.00	Add 1000µl Stock + 0µl diluent
S2	250.00	Add 200µl S1 + 600µl diluent
S3	62.50	Add 200µl S2 + 600µl diluent
S4	15.63	Add 200µl S3 + 600µl diluent
S5	3.91	Add 200µl S4 + 600µl diluent
S6	0.98	Add 200µl S5 + 600µl diluent
S0	0.00	500µl diluent

This product contains ProClin™ 150 as a preservative and is intended for laboratory use and research purposes only. Purchase of this product does not include authorization to use it in diagnostic or therapeutic applications.

S-1502

EIAH

08.07.2022

BMA BIOMEDICALS, Rheinstrasse 28-32, CH-4302 Augst (Switzerland)
 Phone: +41 61 811 6222, Fax: +41 61 811 6006, info@bma.ch, www.bma.ch