



BMA BIOMEDICALS



Peninsula Laboratories

---

**S-1399**

## **Gliadorphin-7 ELISA**

Gliadorphin-7 is an opoid peptide corresponding to amino-acids 43-49 of gliadin, a component of the gluten protein. It is formed in the body by the digestion of the gliadin. Gliadorphin-7 can reach regions in brain by diffusion circumventricular organs. Studies in rats show that gliadorphin-7 (GD-7) infusion results in high presence of this peptide in both geniculate nuclei (GN) and the alveus hippocampus. Accumulation of this peptide was found in autism, schizophrenia and cealic disease possibly due to improper proteolysis.

This ELISA was developed with serum from rabbits immunized with Gliadorphin-7 coupled to a carrier protein.

---

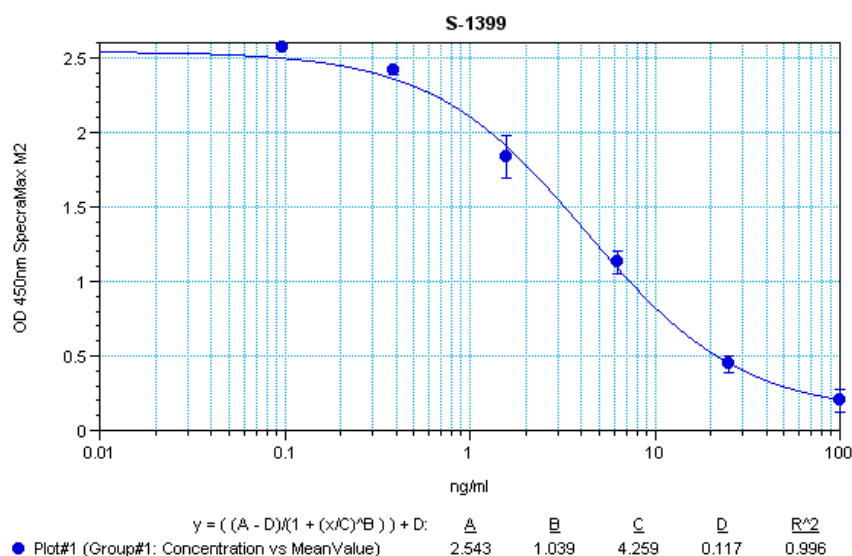
### **TECHNICAL AND ANALYTICAL CHARACTERISTICS**

<b>Lot number:</b>	n/a
<b>Host species:</b>	Rabbit IgG
<b>Quantity:</b>	96 tests
<b>Format:</b>	Formulated for extracted samples (EIAH type).
<b>Shelf-life:</b>	One year from production date. Store refrigerated at 4° - 8°C.
<b>Applications:</b>	This ELISA has been validated with the included reagents. It is intended to be used with appropriately extracted samples (original protocol III, Std.Ab1hr.Bt). For research use only. Please see <a href="http://www.bma.ch">www.bma.ch</a> for protocols and general information.
<b>Range:</b>	0-100ng/ml
<b>Average IC50:</b>	4.25ng/ml
<b>Immunogen:</b>	Synthetic peptide H-Tyr-Pro-Gln-Pro-Gln-Pro-Phe-OH coupled to carrier protein.

#### **Cross-Reactivity:**

<b>PEPTIDE:</b>	<b>%:</b>
Gliadorphin-7	100
Beta- casomorphin-7 (Bovine)	0
Osteocalcin (1-49) (Human)	0

Typical titration curve of Gliadorphin-7 in a competitive ELISA with this antibody:



<b>Suggested Preparation of Standards</b>		
	<b>ng/ml</b>	Range: 0.10 to 100ng/ml
<b>Stock</b>	1000	
<b>S1</b>	100.00	Add 100µl Stock + 900µl diluent
<b>S2</b>	25.00	Add 200µl S1 + 600µl diluent
<b>S3</b>	6.25	Add 200µl S2 + 600µl diluent
<b>S4</b>	1.56	Add 200µl S3 + 600µl diluent
<b>S5</b>	0.39	Add 200µl S4 + 600µl diluent
<b>S6</b>	0.10	Add 200µl S5 + 600µl diluent
<b>S0</b>	0.00	500µl diluent

This product contains Thimerosal as a preservative and is intended for laboratory use and research purposes only. Purchase of this product does not include authorization to use it in diagnostic or therapeutic applications.

S-1399

EIAH

1.3.2021