



BMA BIOMEDICALS



Peninsula Laboratories

S-1373

Human Pancreatic Polypeptide ELISA [UniProt: P01298]

Pancreatic Polypeptide (PP) is a 36 amino acid anorexigenic peptide hormone secreted by the PP cells in the endocrine pancreas. The function of Pancreatic Polypeptide is to self-regulate pancreatic secretion activities such as endocrine and exocrine. It also has effects on hepatic glycogen levels and gastrointestinal secretions. Secretion of Pancreatic Polypeptide can be accomplished through electrical stimulation of the vagus nerve. Pancreatic Polypeptide is related to Peptide YY and Neuropeptide Y (NPY).

This ELISA was developed with serum from rabbits immunized with Pancreatic Polypeptide coupled to a carrier protein.

TECHNICAL AND ANALYTICAL CHARACTERISTICS

Lot number:	A18PO21118
Host species:	Rabbit IgG
Quantity:	96 tests
Format:	Extraction-free kit for human serum or plasma (EIAS type).
Shelf-life:	One year from production date. Store refrigerated at 4° - 8°C.
Applications:	This ELISA has been validated with the included reagents. It is intended to be used with samples of human origin (original protocol V, Ab1hr.Std2hr.BtON). For research use only. Please see www.bma.ch for protocols and general information.
Range:	0 - 25ng/ml
Average IC50:	2.4ng/ml
Immunogen:	Synthetic peptide H-Ala-Pro-Leu-Glu-Pro-Val-Tyr-Pro-Gly-Asp-Asn-Ala-Thr-Pro-Glu-Gln-Met-Ala-Gln-Tyr-Ala-Ala-Asp-Leu-Arg-Arg-Tyr-Ile-Asn-Met-Leu-Thr-Arg-Pro-Arg-Tyr-NH ₂ coupled to carrier protein.

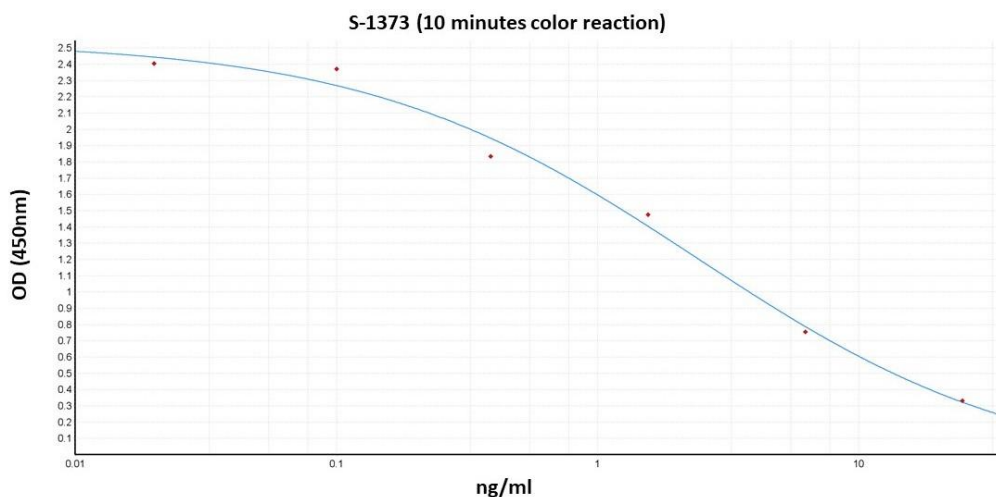
Cross-Reactivity:

PEPTIDE:	%:
Pancreatic Polypeptide (human)	100
Pancreatic Polypeptide (rat)	100
Pancreatic Polypeptide (avian)	0
Pancreatic Polypeptide (salmon)	0
Amylin (free acid) (rat)	0
Amylin (human)	0

Cross-Reactivity (continued):

PEPTIDE:	%:
α -CGRP (human)	0
Glucagon (1-29) (human, bovine, porcine)	0
Insulin (human)	0
NPY (human, rat)	0
PYY (human)	0

Typical titration curve of Pancreatic Polypeptide in a competitive ELISA with this antibody:



Suggested Preparation of Standards		
	ng/ml	Range: 0.02 to 25ng/ml
Stock	1000	
S1	25.00	Add 25 μ l Stock + 975 μ l diluent
S2	6.25	Add 200 μ l S1 + 600 μ l diluent
S3	1.56	Add 200 μ l S2 + 600 μ l diluent
S4	0.39	Add 200 μ l S3 + 600 μ l diluent
S5	0.10	Add 200 μ l S4 + 600 μ l diluent
S6	0.02	Add 200 μ l S5 + 600 μ l diluent
S0	0.00	500 μ l diluent

Related Products: T-4086: Rabbit anti Pancreatic Polypeptide, diluted antiserum (hu)
T-4087: Rabbit anti Pancreatic Polypeptide, purified IgG (hu)
T-4088: Rabbit anti Pancreatic Polypeptide, neat antiserum (hu)

This product contains Thimerosal as a preservative and is intended for laboratory use and research purposes only. Purchase of this product does not include authorization to use it in diagnostic or therapeutic applications.