



BMA BIOMEDICALS



Peninsula Laboratories

Oxytocin ELISA

Oxytocin is a neuropeptide hormone produced by the hypothalamus and secreted by the pituitary gland. It is derived by enzymatic cleavage from the peptide precursor encoded by the human OXT gene. Oxytocin is released into the bloodstream as a hormone in response to stretching of the cervix and uterus during labor and it plays an important role in the childbirth process and also helps with male reproduction. Oxytocin is derived by enzymatic cleavage from the peptide precursor encoded by the human OXT gene.

This ELISA was developed with serum from rabbits immunized with Oxytocin coupled to a carrier protein.

TECHNICAL AND ANALYTICAL CHARACTERISTICS

Catalog number:	S-1355 (Lot A18PO26042)
Host species:	Rabbit IgG
Quantity:	96 tests
Format:	Extraction-free kit for human serum or plasma (EIAS type).
Shelf-life:	One year from production date. Store refrigerated at 4° - 8°C.
Applications:	This ELISA has been validated with the included reagents. It is intended to be used with samples of human origin (original protocol V). For research use only. Please see www.bma.ch for protocols and general information.
Range:	0 - 10 ng/ml
Linear Range:	0.03 - 0.91 ng/ml
Lower LOQ:	4.1 pg/ml
Average IC₅₀:	0.18 ng/ml
Average CV_{intra}:	2.6%
Immunogen:	Synthetic peptide H-Cys-Tyr-Ile-Gln-Asn-Cys-Pro-Leu-Gly-NH ₂ , (Disulfide bond) coupled to carrier protein.

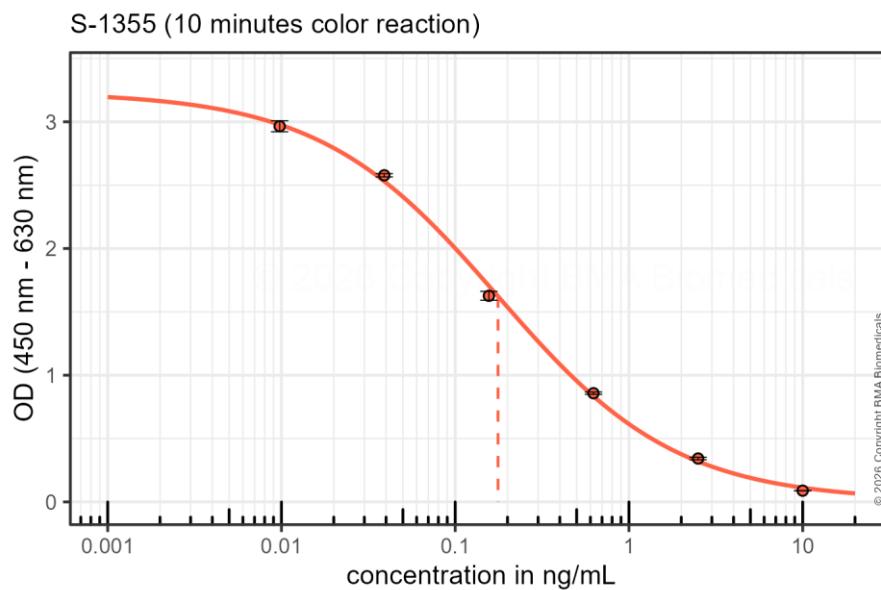
Cross-Reactivity:

PEPTIDE:	%:
Oxytocin	100
[Lys ⁸]-Vasopressin	<0.01
[Arg ⁸]-Vasopressin	0
[Arg ⁸]-Vasotocin	0
human Growth Hormone	0
ANF (1-28) (human)	0
LHRH	0
CRF (human, rat)	0
Met-Enkephalin	0

Cross-Reactivity (continued):

PEPTIDE:	%:
GRF (human)	0
Somatostatin-14	0
TRH	0
VIP (human, bovine, porcine, rat)	0
(Ile ³)-Pressinoic Acid	0
PACAP-27 (human, mouse, ovine, porcine, rat)	0

Typical titration curve of Oxytocin in a competitive ELISA with this antibody:



Suggested Preparation of Standards		
	ng/ml	Range: 0.01 to 10ng/ml
Stock	1000	
S1	10.00	Add 10µl Stock + 990µl diluent
S2	2.50	Add 200µl S1 + 600µl diluent
S3	0.63	Add 200µl S2 + 600µl diluent
S4	0.16	Add 200µl S3 + 600µl diluent
S5	0.04	Add 200µl S4 + 600µl diluent
S6	0.01	Add 200µl S5 + 600µl diluent
S0	0.00	500µl diluent

Related Products:

- T-4082: anti Oxytocin, diluted antiserum
- T-4083: anti Oxytocin, purified IgG
- T-4084: anti Oxytocin, neat antiserum, host: rabbit
- T-5021: anti Oxytocin, neat antiserum, host: guinea pig

This product contains ProClin™ 150 as a preservative and is intended for laboratory use and research purposes only. Purchase of this product does not include authorization to use it in diagnostic or therapeutic applications.