



BMA BIOMEDICALS



Peninsula Laboratories

S-1245

β -Endorphin (bovine, camel, mouse, ovine) UniProt: [P01190, P01203, P01193, P01191] ELISA

β -Endorphin is a 31 amino acid endogenous opioid neuropeptide that is produced in certain neurons within both the central and the peripheral nervous system. It is known to be one of the three endorphins that are produced in humans, together with α -Endorphin and γ -Endorphin, and it primarily acts in the body to reduce stress and maintain homeostasis.

This ELISA was developed with serum from rabbits immunized with β -Endorphin coupled to a carrier protein.

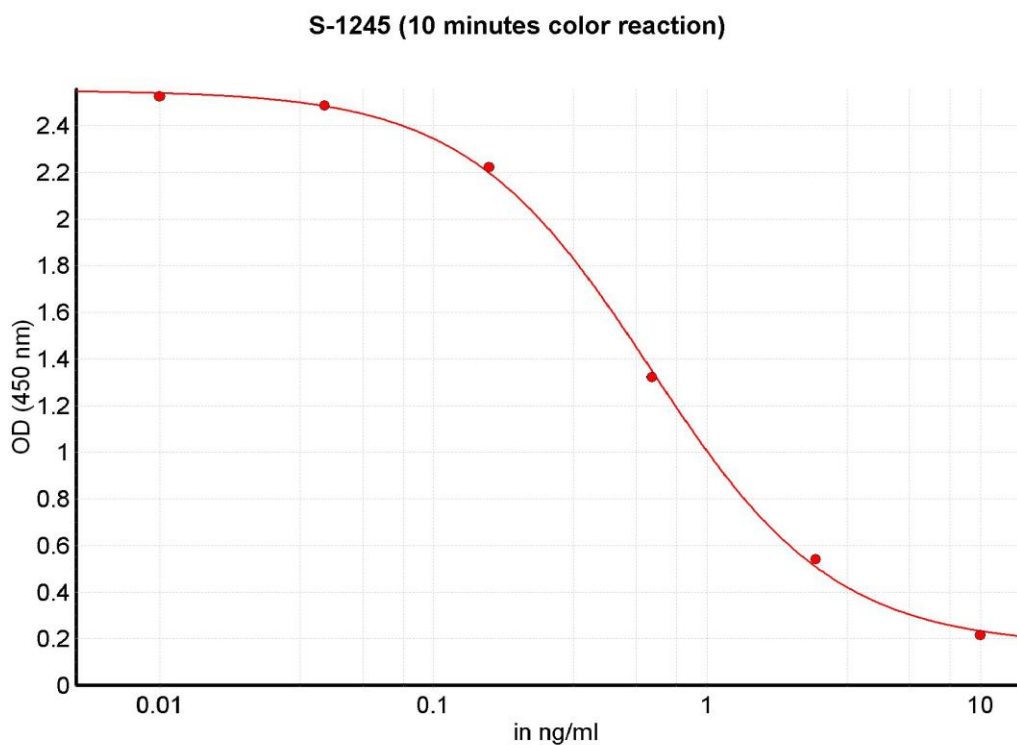
TECHNICAL AND ANALYTICAL CHARACTERISTICS

Lot number:	A18PO21160
Host species:	Rabbit IgG
Quantity:	96 tests
Format:	Formulated for extracted samples (EIAH type).
Shelf-life:	One year from production date. Store refrigerated at 4° - 8°C.
Applications:	This ELISA has been validated with the included reagents. It is intended to be used with appropriately extracted samples (original protocol III, Std.Ab1hr.Bt). For research use only. Please see www.bma.ch for protocols and general information.
Range:	0-10ng/ml
Average IC50:	0.6ng/ml
Immunogen:	Synthetic peptide H-Tyr-Gly-Gly-Phe-Met-Thr-Ser-Glu-Lys-Ser-Gln-Thr-Pro-Leu-Val-Thr-Leu-Phe-Lys-Asn-Ala-Ile-Ile-Lys-Asn-Ala-His-Lys-Lys-Gly-Gln-OH coupled to carrier protein.

Cross-Reactivity:

PEPTIDE:	%:
β -Endorphin (bovine, camel, mouse, ovine, rat)	100
β -Endorphin (human)	100
β -Endorphin (equine)	100
β -Endorphin (porcine)	100
β -Lipotropin (human)	100
β -Endorphin	0
β -Endorphin	0
Met-Enkephalin	0
β -MSH	0
ACTH (1-39) (human)	0
Dynorphin A (1-13) (porcine)	0

Typical titration curve of β -Endorphin in a competitive ELISA with this antibody:



Suggested Preparation of Standards		
	ng/ml	Range: 0.01 to 10ng/ml
Stock	1000	
S1	10.00	Add 10 μ l Stock + 990 μ l diluent
S2	2.50	Add 200 μ l S1 + 600 μ l diluent
S3	0.63	Add 200 μ l S2 + 600 μ l diluent
S4	0.16	Add 200 μ l S3 + 600 μ l diluent
S5	0.04	Add 200 μ l S4 + 600 μ l diluent
S6	0.01	Add 200 μ l S5 + 600 μ l diluent
S0	0.00	500 μ l diluent

Related Products: S-1134: ELISA, high sensitivity for extracted samples (hu)
 S-1240: ELISA, extraction-free for human serum and plasma samples
 S-1264: ELISA, extraction-free for rat serum and plasma samples
 T-4041: anti β -Endorphin (hu) neat antiserum, host: rabbit
 T-4044: anti β -Endorphin (rt) purified IgG, host: rabbit

This product contains ProClin™ 150 as a preservative and is intended for laboratory use and research purposes only. Purchase of this product does not include authorization to use it in diagnostic or therapeutic applications.

S-1245

EIAH

17.11.2021

BMA BIOMEDICALS, Rheinstrasse 28-32, CH-4302 Augst (Switzerland)
 Phone: +41 61 811 6222, Fax: +41 61 811 6006, info@bma.ch, www.bma.ch