



BMA BIOMEDICALS



Peninsula Laboratories

---

## S-1230

### Secretin (porcine) ELISA [UniProt: P63298]

Secretin is a gastrointestinal peptide hormone that regulates secretions in the stomach, pancreas, and liver. It is produced from the enterochromaffin cells in the duodenum in response to a duodenal content with a pH below 4.5. Secretin is also involved in body fluid homeostasis and is considered a neuropeptide hormone since it is also expressed in the central nervous system.

This ELISA was developed with serum from rabbits immunized with Secretin coupled to a carrier protein.

---

#### TECHNICAL AND ANALYTICAL CHARACTERISTICS

|                      |  |
|----------------------|--|
| <b>Lot number:</b>   | A14696   |
| <b>Host species:</b> | Rabbit IgG   |
| <b>Quantity:</b>     | 96 tests   |
| <b>Format:</b>       | Formulated for extracted samples (EIAH type).  |
| <b>Shelf-life:</b>   | One year from production date. Store refrigerated at 4° - 8°C.   |
| <b>Applications:</b> | This ELISA has been validated with the included reagents. It is intended to be used with appropriately extracted samples (original protocol III, Std.Ab1hr.Bt). For research use only.<br>Please see <a href="http://www.bma.ch">www.bma.ch</a> for protocols and general information. |
| <b>Range:</b>        | 0-10ng/ml  |
| <b>Average IC50:</b> | 0.46ng/ml  |
| <b>Immunogen:</b>    | Synthetic peptide H-His-Ser-Asp-Gly-Thr-Phe-Thr-Ser-Glu-Leu-Ser-Arg-Leu-Arg-Asp-Ser-Ala-Arg-Leu-Gln-Arg-Leu-Leu-Gln-Gly-Leu-Val-NH <sub>2</sub> coupled to carrier protein.  |

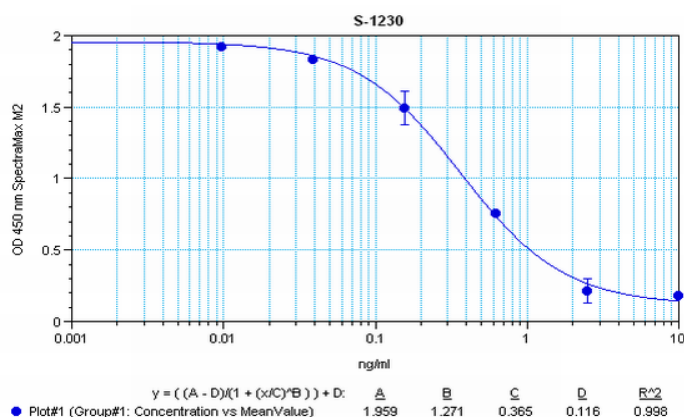
#### Cross-Reactivity:

| PEPTIDE:                          | %:  |
|-----------------------------------|-----|
| Secretin (porcine)                | 100 |
| Secretin (human)                  | 100 |
| Secretin (rat)                    | 100 |
| Secretin (chicken)                | 0   |
| VIP (human, bovine, porcine, rat) | 0   |
| CCK Octapeptide (desulfated)      | 0   |
| Substance P                       | 0   |
| Somatostatin-14                   | 0   |
| NPY (porcine)                     | 0   |

## Cross-Reactivity (continued):

| PEPTIDE:        | %: |
|-----------------|----|
| Met-Enkephalin  | 0  |
| Insulin (human) | 0  |
| PHI (porcine)   | 0  |
| Amylin (human)  | 0  |

Typical titration curve of Secretin in a competitive ELISA with this antibody:



| Suggested Preparation of Standards |       |                                |
|------------------------------------|-------|--------------------------------|
|                                    | ng/ml | Range: 0.01 to 10ng/ml         |
| <b>Stock</b>                       | 1000  |                                |
| <b>S1</b>                          | 10.00 | Add 10µl Stock + 990µl diluent |
| <b>S2</b>                          | 2.50  | Add 200µl S1 + 600µl diluent   |
| <b>S3</b>                          | 0.63  | Add 200µl S2 + 600µl diluent   |
| <b>S4</b>                          | 0.16  | Add 200µl S3 + 600µl diluent   |
| <b>S5</b>                          | 0.04  | Add 200µl S4 + 600µl diluent   |
| <b>S6</b>                          | 0.01  | Add 200µl S5 + 600µl diluent   |
| <b>S0</b>                          | 0.00  | 500µl diluent                  |

Related Products: S-1527: ELISA, extraction-free for human samples  
 S-1229: ELISA, high sensitivity for extracted samples (hu)  
 T-4540: anti Secretin (hu) neat antiserum  
 T-4541: anti Secretin (po) diluted antiserum  
 T-4543: anti Secretin (po) neat antiserum

This product contains Thimerosal as a preservative and is intended for laboratory use and research purposes only. Purchase of this product does not include authorization to use it in diagnostic or therapeutic applications.

S-1230

EIAH – hu

20.10.2020

BMA BIOMEDICALS, Rheinstrasse 28-32, CH-4302 Augst (Switzerland)  
 Phone: +41 61 811 6222, Fax: +41 61 811 6006, info@bma.ch, www.bma.ch