



BMA BIOMEDICALS



Peninsula Laboratories

---

## S-1183

### Vasoactive Intestinal Peptide (human, mouse, rat) ELISA [UniProt: P01282, P32648, P01283]

Vasoactive intestinal peptide (VIP) is a 28 amino acid neuropeptide that is vasoactive in the intestine. It belongs to a glucagon/secretin superfamily, the ligand of class II G protein-coupled receptors, and it is produced in many tissues of vertebrates including the gut, pancreas, and suprachiasmatic nuclei of the hypothalamus in the brain. VIP functions as a neuromodulator and neurotransmitter, and it is known to regulate muscle activity, epithelial cell secretion, and blood flow in the gastrointestinal tract.

This ELISA was developed with serum from rabbits immunized with Vasoactive Intestinal Peptide VIP coupled to a carrier protein.

---

#### TECHNICAL AND ANALYTICAL CHARACTERISTICS

<b>Lot number:</b>	A18PO2195
<b>Host species:</b>	Rabbit IgG
<b>Quantity:</b>	96 tests
<b>Format:</b>	Formulated for extracted samples (EIAH type).
<b>Shelf-life:</b>	One year from production date. Store refrigerated at 4° - 8°C.
<b>Applications:</b>	This ELISA has been validated with the included reagents. It is intended to be used with appropriately extracted samples (original protocol III, Std.Ab1hr.Bt). For research use only. Please see <a href="http://www.bma.ch">www.bma.ch</a> for protocols and general information.
<b>Range:</b>	0-10 ng/ml
<b>Average IC50:</b>	0.4 ng/ml
<b>Immunogen:</b>	Synthetic peptide H-His-Ser-Asp-Ala-Val-Phe-Thr-Asp-Asn-Tyr-Thr-Arg-Leu-Arg-Lys-Gln-Met-Ala-Val-Lys-Lys-Tyr-Leu-Asn-Ser-Ile-Leu-Asn-NH <sub>2</sub> coupled to a carrier protein.

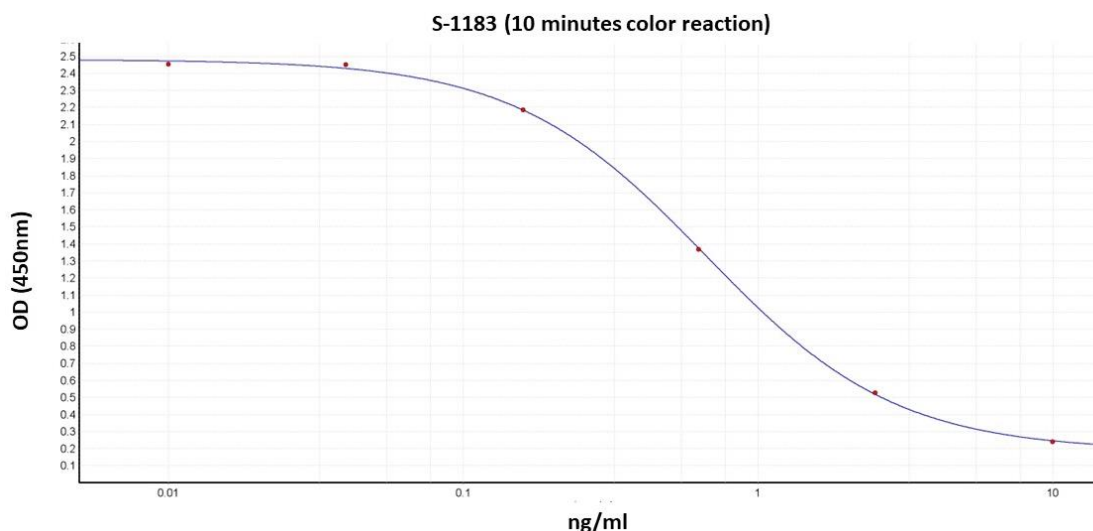
#### Cross-Reactivity:

PEPTIDE:	%:
VIP (human, mouse, rat)	100
VIP (Guinea Pig)	100
VIP (10-28) (human, porcine, rat)	100
VIP (Chicken)	<1
PACAP-27 (human, mouse, ovine, porcine, rat)	<0.02
VIP (1-12) (human, bovine, porcine, rat)	0
PHM-27 (human)	0
Substance P	0

### Cross-Reactivity (continued):

Endothelin-1 (human, porcine, canine, rat, mouse, bovine)	0
Secretin (porcine)	0
Glucagon (1-29) (human, bovine, porcine)	0
Galanin (rat)	0
Somatostatin-14	0
PACAP-38 (human, mouse, ovine, porcine, rat)	0

Typical titration curve of Vasoactive Intestinal Peptide in a competitive ELISA with this antibody:



Suggested Preparation of Standards		
	ng/ml	Range: 0.01 to 10ng/ml
<b>Stock</b>	1000	
<b>S1</b>	10.00	Add 10µl Stock + 990µl diluent
<b>S2</b>	2.50	Add 200µl S1 + 600µl diluent
<b>S3</b>	0.63	Add 200µl S2 + 600µl diluent
<b>S4</b>	0.16	Add 200µl S3 + 600µl diluent
<b>S5</b>	0.04	Add 200µl S4 + 600µl diluent
<b>S6</b>	0.01	Add 200µl S5 + 600µl diluent
<b>S0</b>	0.00	500µl diluent

Related Products: S-1201: ELISA, extraction-free for human serum and plasma samples  
S-1202: ELISA, extraction-free for rat serum and plasma samples  
S-1471: ELISA, extraction-free for mouse serum and plasma samples  
T-4116: diluted antiserum, host: rabbit  
T-4245: purified IgG, host: rabbit  
T-4246: neat antiserum, host: rabbit  
T-5029: diluted antiserum, host: guinea pig  
T-5030: neat antiserum, host: guinea pig

This product contains Thimerosal as a preservative and is intended for laboratory use and research purposes only. Purchase of this product does not include authorization to use it in diagnostic or therapeutic applications.

S-1183

EIAH – hu, ms, rt

6.09.2021

BMA BIOMEDICALS, Rheinstrasse 28-32, CH-4302 Augst (Switzerland)  
Phone: +41 61 811 6222, Fax: +41 61 811 6006, info@bma.ch, www.bma.ch