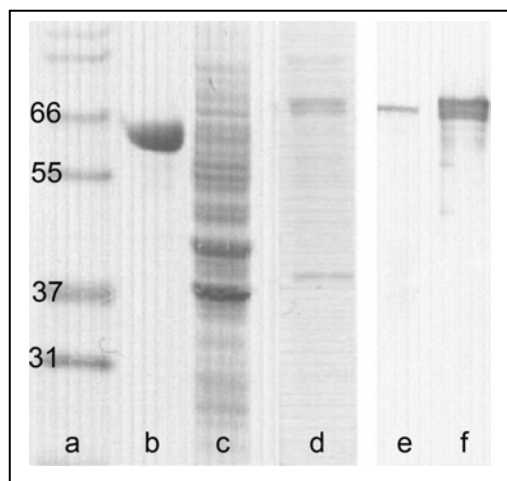


## Monoclonal Antibody To Porcine Mx1 Protein Marker for Viral Infection

Monoclonal antibody AM39 recognizes the porcine Mx1 protein. Mx proteins are cytoplasmic proteins induced by type-1 interferons ( $\alpha$  and  $\beta$ ) in leukocytes. However, there is a baseline level of expression even in the absence of viral infection. In humans, mainly monocytes and lymphocytes have been shown to express the Mx gene, whereas Mx expression is low in granulocytes. Mx proteins are high molecular weight GTPases of 70 - 80kD which belong to the dynamin superfamily. Mx proteins have a strong propensity to aggregate and form homo-oligomers. A unique property is their antiviral activity against many RNA viruses.

<b>Product Number:</b>	T-3501 (Lot 01PO0904)
<b>Clone:</b>	AM39
<b>Host species, isotype:</b>	Mouse IgG1 kappa
<b>Quantity:</b>	200 $\mu$ g
<b>Format:</b>	Affinity purified, lyophilized
	Reconstitute by adding 0.5ml distilled water. This stock solution contains 0.4mg/ml IgG, phosphate buffered saline pH 7.2 (PBS), 5mg/ml bovine serum albumin (BSA) as a stabilizer and 0.09% sodium azide as a preservative.
<b>Stability:</b>	Original vial: 1 year at 4° - 8°C Stock solution or aliquots thereof: 1 year at -20°C. Avoid repeated thawing and freezing.
<b>Applications:</b>	Tested for ELISA and Western Blot.

### Western Blot with monoclonal antibody AM39:



- a) molecular weight standards (kD)
- b) bovine serum albumin (BSA)
- c) porcine leukocytes extract
- d) recombinant porcine Mx1
- e) lane c developed with AM39
- f) lane d developed with AM39

**Immunogen:** Recombinant porcine Mx1 protein  
**Antigen, epitope:** The epitope has not been fully characterized.  
**Specificity:** **Pig:** Mx1 protein

---

### **Selected references**

O. Haller & G. Kochs: Interferon-Induced Mx Proteins: Dynammin-Like GTPases with Antiviral Activity. *Traffic* 3: 710-17 (2002). Review Article.

For *in vitro* research only. Caution: this product contains sodium azide, a poisonous and hazardous substance.