



**BMA BIOMEDICALS**

BMA BIOMEDICALS  
Rheinstrasse 28-32  
CH-4302 Augst (Switzerland)  
Phone: ++41 61 811 6222  
Fax: ++41 61 811 6006  
info@bma.ch  
www.bma.ch

---

## **Polyclonal Antibody to Human BRI**

### **ITM2B**

This polyclonal antibody has been developed against the amino terminal sequence of BRI protein (ITM2B), a type-II single spanning transmembrane protein found in brain and other tissues. Mutation of the BRI gene with concomitant elongation of the carboxy terminus and its cleavage by the protease furin has been shown to lead to deposition of a protein fragment that may be involved in the pathogenesis of familial British dementia. See also the related product: polyclonal antibody to human ABri, product T-1516.

---

<b>Product Number:</b>	T-1515 (Lot 02AP0805)
<b>Clone:</b>	Polyclonal antibody
<b>Host species, isotype:</b>	Chicken IgY
<b>Quantity:</b>	200µg
<b>Format:</b>	Affinity purified, liquid
	Supplied as 0.2ml solution. This stock solution contains 1mg/ml IgY, phosphate buffered saline pH 7.2 (PBS) and 0.09% sodium azide as a preservative.
<b>Stability:</b>	Stock solution or aliquots thereof: 6 months at 4° - 8°C.
<b>Applications:</b>	Tested for Western Blot. Not recommended for immunohistochemistry (IHC).
	<b>Approximate working dilution for IHC:</b> Optimal dilutions should be determined by the end user. Suggested positive control: (pathological) brain sections Please see <a href="http://www.bma.ch">www.bma.ch</a> for protocols and general information.
<b>Immunogen:</b>	Peptide coupled to carrier protein.

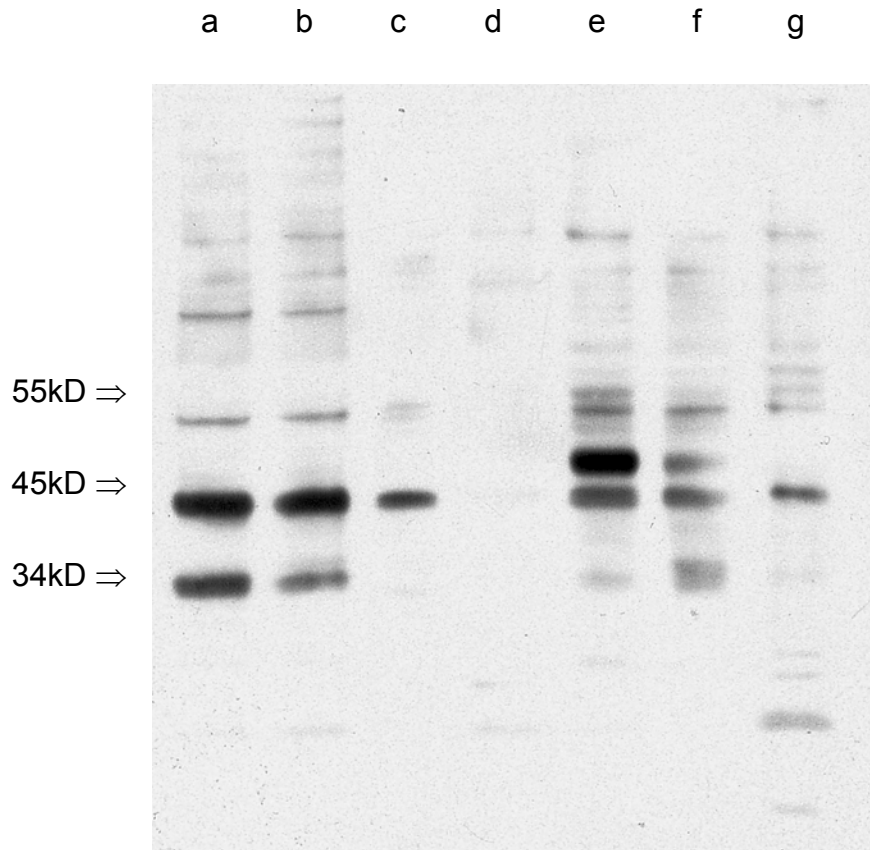
---

#### **Selected references**

Vidal, R. et al.: A stop-codon mutation in the BRI gene associated with familial British dementia. *Nature* **399**: 776-781 (1999)

Western Blot of various organs stained with anti BRI (ITM2B), N-terminal

B6 mouse strain



a: cortex  
b: cerebellum  
c: heart  
d: lung  
e: liver  
f: kidney  
g: pancreas

For *in vitro* research only. Caution: this product contains sodium azide, a poisonous and hazardous substance.