



BMA BIOMEDICALS



Peninsula Laboratories

S-1511

Glucagon-Like Peptide 1 (GLP-1) (32-36) amide (human, mouse, rat) Elisa [Uniprot: P01275, P55095, P32301]

Glucagon-Like Peptide 1 (GLP-1) (32-36) amide is a novel pentapeptide cleavage product of GLP-1. It is known to activate AMPK signaling and to protect against palmitate-induced oxidative stress. Glucagon-Like Peptide 1 (32-36) modulates whole body glucose metabolism in dogs.

This ELISA was developed with serum from rabbits immunized with Glucagon-Like Peptide 1 coupled to a carrier protein.

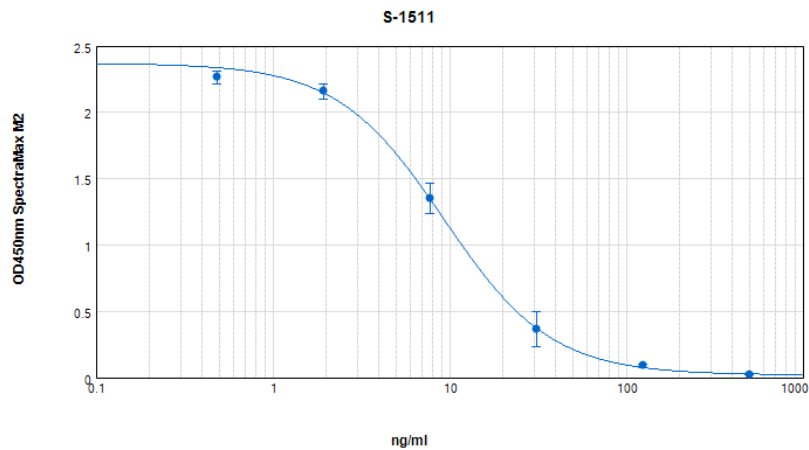
TECHNICAL AND ANALYTICAL CHARACTERISTICS

Lot number:	A18163
Host species:	Rabbit IgG
Quantity:	96 tests
Format:	Formulated for extracted samples (EIAH type).
Shelf-life:	One year from production date. Store refrigerated at 4° - 8°C.
Applications:	This ELISA has been validated with the included reagents. It is intended to be used with appropriately extracted samples (original protocol III, Std.Ab1hr.Bt). For research use only. Please see www.bma.ch for protocols and general information.
Range:	0-500ng/ml
Average IC50:	13ng/ml
Immunogen:	Synthetic peptide H-Leu-Val-Lys-Gly-Arg-NH ₂ coupled to carrier protein.

Cross-Reactivity:

PEPTIDE:	%:
GLP-1 (32-36) amide	100
GLP-1 (28-36) amide (human, mouse, rat)	100
GLP-1 (7-36) amide (human, bovine, guinea pig, mouse, rat)	100
GLP-1 (9-36) amide (human)	29
GLP-1 (human)	0
GLP-1 (7-37) (human, bovine, guinea pig, mouse, rat)	0

Typical titration curve of GLP-1 in a competitive ELISA with this antibody:



Suggested Preparation of Standards		
	ng/ml	Range: 0.49 to 500ng/ml
Stock	1000	
S1	500.00	Add 250µl Stock + 250µl diluent
S2	125.00	Add 200µl S1 + 600µl diluent
S3	31.25	Add 200µl S2 + 600µl diluent
S4	7.81	Add 200µl S3 + 600µl diluent
S5	1.95	Add 200µl S4 + 600µl diluent
S6	0.49	Add 200µl S5 + 600µl diluent
S0	0.00	500µl diluent

Related Products:

S-1359: ELISA, extraction-free for serum and plasma samples
 T-4057: anti GLP-1 (7-36), neat antiserum
 T-4111: anti GLP-1, purified IgG
 T-4363: anti GLP-1, (7-37) neat antiserum

This product contains Thimerosal as a preservative and is intended for laboratory use and research purposes only. Purchase of this product does not include authorization to use it in diagnostic or therapeutic applications.

S-1511

EIAH – hu, ms, rt

18.8.2020