



BMA BIOMEDICALS



Peninsula Laboratories

---

## S-1508

### ELABELA (human) Elisa [UniProt: X5D2P3]

ELABELA is a 32-amino acid peptide hormone that binds to the Apelin receptor. It bears 2 conserved di-arginine motifs (R31/R32 and R42/R43) suggesting that it may be further processed by Furin-like endopeptidases. Its function is crucial for heart development during embryogenesis and it needs to be secreted to become active since deletion of 7 residues in its signal peptide causes a complete loss-of-function in zebrafish.

This ELISA was developed with serum from rabbits immunized with ELABELA coupled to a carrier protein.

---

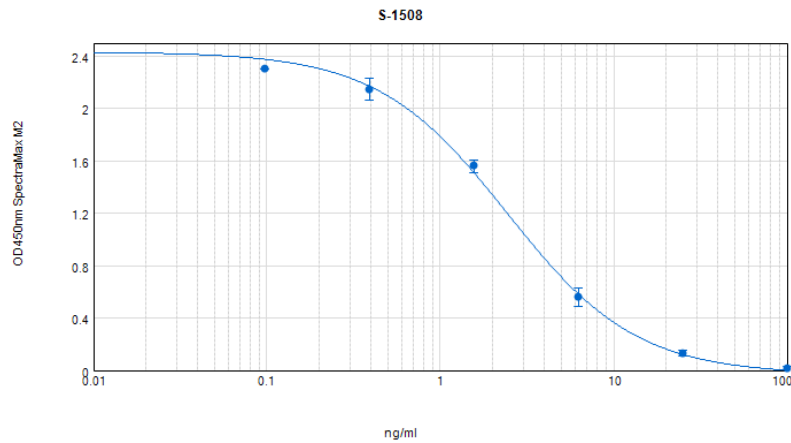
### TECHNICAL AND ANALYTICAL CHARACTERISTICS

<b>Lot number:</b>	A18181
<b>Host species:</b>	Rabbit IgG
<b>Quantity:</b>	96 tests
<b>Format:</b>	Formulated for extracted samples (EIAH type).
<b>Shelf-life:</b>	One year from production date. Store refrigerated at 4° - 8°C.
<b>Applications:</b>	This ELISA has been validated with the included reagents. It is intended to be used with appropriately extracted samples (original protocol III, Std.Ab1hr.Bt). For research use only. Please see <a href="http://www.bma.ch">www.bma.ch</a> for protocols and general information.
<b>Range:</b>	0-100ng/ml
<b>Average IC50:</b>	2ng/ml
<b>Immunogen:</b>	Synthetic peptide H-Gln-Arg-Pro-Val-Asn-Leu-Thr-Met-Arg-Arg-Lys-Leu-Arg-Lys-His-Asn-Cys-Leu-Gln-Arg-Arg-Cys-Met-Pro-Leu-His-Ser-Arg-Val-Pro-Phe-Pro-OH, (disulfide bridge), coupled to carrier protein.

#### Cross-Reactivity:

PEPTIDE:	%:
ELABELA (human)	100
ELABELA (rat)	0.1
Apelin-13	0
Apelin-17	0
(Pyr-1) Apelin-13	0

Typical titration curve of Elabela in a competitive ELISA with this antibody:



Suggested Preparation of Standards		
	ng/ml	Range: 0.10 to 100ng/ml
<b>Stock</b>	1000	
<b>S1</b>	100.00	Add 100µl Stock + 900µl diluent
<b>S2</b>	25.00	Add 200µl S1 + 600µl diluent
<b>S3</b>	6.25	Add 200µl S2 + 600µl diluent
<b>S4</b>	1.56	Add 200µl S3 + 600µl diluent
<b>S5</b>	0.39	Add 200µl S4 + 600µl diluent
<b>S6</b>	0.10	Add 200µl S5 + 600µl diluent
<b>S0</b>	0.00	500µl diluent

Related Products:

S-1543: ELISA, high sensitivity for extracted samples (ms)  
 T-4968: anti ELABELA, lyophilized antiserum for ELISA (rt)  
 S-1506: ELISA, high sensitivity for extracted samples (rt)  
 T-4881: anti ELABELA, neat antiserum (ms)  
 T-4970: anti ELABELA, lyophilized antiserum for ELISA (hu)

---

This product contains Thimerosal as a preservative and is intended for laboratory use and research purposes only. Purchase of this product does not include authorization to use it in diagnostic or therapeutic applications.

S-1508

EIAH – hu

19.6.2020