



BMA BIOMEDICALS



Peninsula Laboratories

---

## S-1445

### **(Pyr<sup>1</sup>)-Apelin-13 (human, bovine, mouse, rat) ELISA [UniProt: Q9ULZ1, Q9TUI9, Q9R0R4, Q9R0R3]**

(Pyr<sup>1</sup>)-Apelin-13 binds with high affinity and selectivity to human cardiac tissue. Apelin is the endogenous ligand for the G-protein-coupled APJ receptor. It is produced as a pre-proprotein of 77 amino acids. Upon signal peptide cleavage, the proprotein of 55 amino acids may generate several active fragments: Apelin-36 (36 aa corresponding to the sequence 42-77), Apelin-17 (17 aa corresponding to the sequence 61-77) and Apelin-13 (13 aa corresponding to the sequence 65-77). Apelin-13 may undergo a pyroglutamylation at its N-terminal glutamine residue.

his ELISA was developed with serum from rabbits immunized with (Pyr<sup>1</sup>)-Apelin-13 coupled to a carrier protein.

---

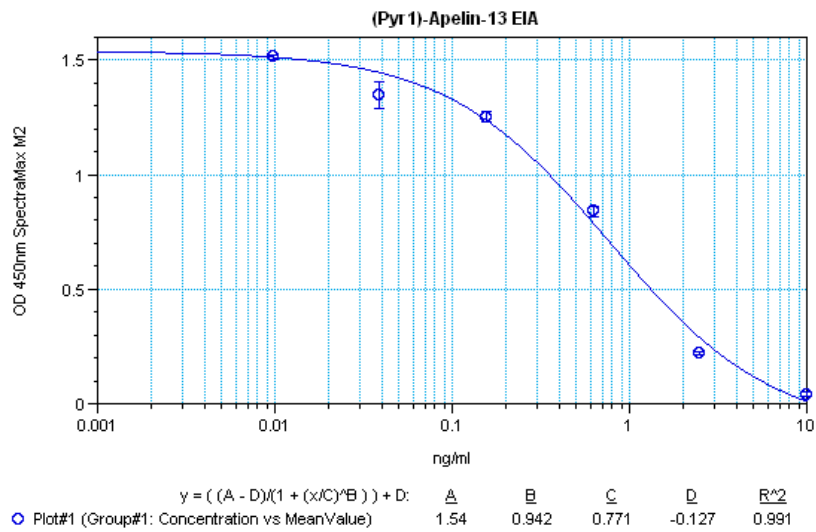
#### **TECHNICAL AND ANALYTICAL CHARACTERISTICS**

<b>Lot number:</b>	A17104
<b>Host species:</b>	Rabbit IgG
<b>Quantity:</b>	96 tests
<b>Format:</b>	Formulated for extracted samples (EIAH type).
<b>Shelf-life:</b>	One year from production date. Store refrigerated at 4° - 8°C.
<b>Applications:</b>	This ELISA has been validated with the included reagents. It is intended to be used with appropriately extracted samples (original protocol III, Std.Ab1hr.Bt). For research use only. Please see <a href="http://www.bma.ch">www.bma.ch</a> for protocols and general information.
<b>Range:</b>	0-10ng/ml
<b>Average IC50:</b>	0.7ng/ml
<b>Immunogen:</b>	Synthetic peptide (Pyr)-Arg-Pro-Arg-Leu-Ser-His-Lys-Gly-Pro-Met-Pro-Phe-OH coupled to carrier protein.

#### **Cross-Reactivity:**

<b>PEPTIDE:</b>	<b>%:</b>
(Pyr <sup>1</sup> )-Apelin-13 (human, bovine, mouse, rat)	100
Apelin-13	100
Apelin-17	100
Angiotensin I	0
Angiotensin II	0
Angiotensin III	0

Typical titration curve of (Pyr1)-Apelin-13 in a competitive ELISA with this antibody:



<b>Suggested Preparation of Standards</b>		
	ng/ml	Range: 0.01 to 10ng/ml
<b>Stock</b>	1000	
<b>S1</b>	10.00	Add 10µl Stock + 990µl diluent
<b>S2</b>	2.50	Add 200µl S1 + 600µl diluent
<b>S3</b>	0.63	Add 200µl S2 + 600µl diluent
<b>S4</b>	0.16	Add 200µl S3 + 600µl diluent
<b>S5</b>	0.04	Add 200µl S4 + 600µl diluent
<b>S6</b>	0.01	Add 200µl S5 + 600µl diluent
<b>S0</b>	0.00	500µl diluent

Related Products:

S-1531: ELISA, high sensitivity for extracted samples (36)(hu)  
 S-1416: ELISA, high sensitivity for extracted samples (13) (hu)  
 S-1505: ELISA, high sensitivity for extracted samples (16)  
 T-4825: Rabbit anti Apelin-17, neat antiserum  
 T-4824: Rabbit anti Apelin-17, purified IgG

---

This product contains Thimerosal as a preservative and is intended for laboratory use and research purposes only. Purchase of this product does not include authorization to use it in diagnostic or therapeutic applications.

S-1445

EIAH

1.3.2021