



BMA BIOMEDICALS



Peninsula Laboratories

S-1357 (Arg⁸)-Vasopressin ELISA

(Arg⁸)-Vasopressin or argipressin is an antidiuretic peptide hormone that plays a key role in maintaining plasma osmolality. The peptide released from the posterior pituitary gland promotes renal tubular reabsorption of water. In high concentration, it also raises blood pressure by inducing moderate vasoconstriction. Argipressin is involved in the control of circadian rhythm, thermoregulation, and ACTH release in the brain.

This ELISA was developed with serum from rabbits immunized with (Arg⁸)-Vasopressin coupled to a carrier protein.

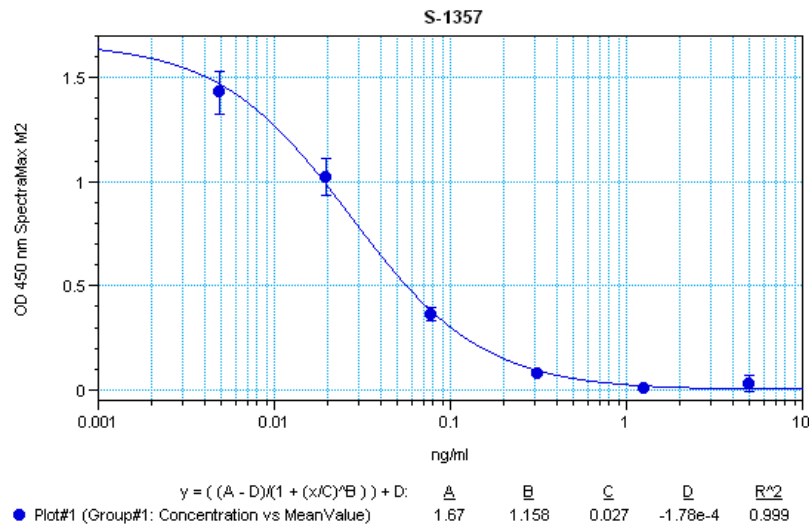
TECHNICAL AND ANALYTICAL CHARACTERISTICS

Lot number:	A18099
Host species:	Rabbit IgG
Quantity:	96 tests
Format:	Extraction-free kit for human serum or plasma (EIAS type).
Shelf-life:	One year from production date. Store refrigerated at 4° - 8°C.
Applications:	This ELISA has been validated with the included reagents. It is intended to be used with samples of human origin (original protocol V, Ab1hr.Std2hr.BtON). For research use only. Please see www.bma.ch for protocols and general information.
Range:	0 – 5ng/ml
Average IC₅₀:	0.1ng/ml
Immunogen:	Stimulated human B-lymphocytes. Synthetic peptide H-Cys-Tyr-Phe-Gln-Asn-Cys-Pro-Arg-Gly-NH ₂ , (Disulfide bond) coupled to carrier protein.

Cross-Reactivity:

PEPTIDE	%
(Arg ⁸)-Vasopressin	100
(Arg ⁸)-Vasotocin	53
(Lys ⁸)-Vasopressin	0
Oxytocin	0
LHRH	0
ACTH (1-39) (human)	0
Met-Enkephalin	0
PACAP-38 (ovine, human, mouse, porcine, rat)	0
PACAP-27 (rat, porcine, human, mouse, ovine)	0

Typical titration curve of (Arg8)-Vasopressin in a competitive ELISA with this antibody:



Suggested Preparation of Standards		
	ng/ml	Range: 0.00 to 5ng/ml
Stock	1000	
S1	5.00	Add 5µl Stock + 995µl diluent
S2	1.25	Add 200µl S1 + 600µl diluent
S3	0.31	Add 200µl S2 + 600µl diluent
S4	0.08	Add 200µl S3 + 600µl diluent
S5	0.02	Add 200µl S4 + 600µl diluent
S6	0.00	Add 200µl S5 + 600µl diluent
S0	0.00	500µl diluent

Related Products:

- T-4563: neat antiserum
- T-4561: diluted antiserum
- T-4562: purified IgG
- S-1233: ELISA, high sensitivity for extracted samples (EIAH)
- S-1358: ELISA, extraction-free for rat samples (EIAS-r)

This product contains Thimerosal as a preservative and is intended for laboratory use and research purposes only. Purchase of this product does not include authorization to use it in diagnostic or therapeutic applications.

S-1357

EIAS-h

6.09.2021