



BMA BIOMEDICALS



Peninsula Laboratories

---

## S-1167

### **$\alpha$ -Calcitonin Gene-Related Peptide (canine, mouse, rat) ELISA [UniProt: Q9MYV1, Q99JA0, P01256]**

$\alpha$ -Calcitonin Gene-Related Peptide ( $\alpha$ -CGRP) is a regulatory neuropeptide of 37 amino acids and is formed by the alternative splicing of the calcitonin / CGRP gene located on chromosome 11. It is widely distributed in both the peripheral and central nervous system, predominantly in cell bodies of the dorsal root ganglion (DRG) and it is known to be a potent vasodilator with inotropic and chronotropic effects.

This ELISA was developed with serum from rabbits immunized with  $\alpha$ -Calcitonin Gene-Related Peptide coupled to a carrier protein.

---

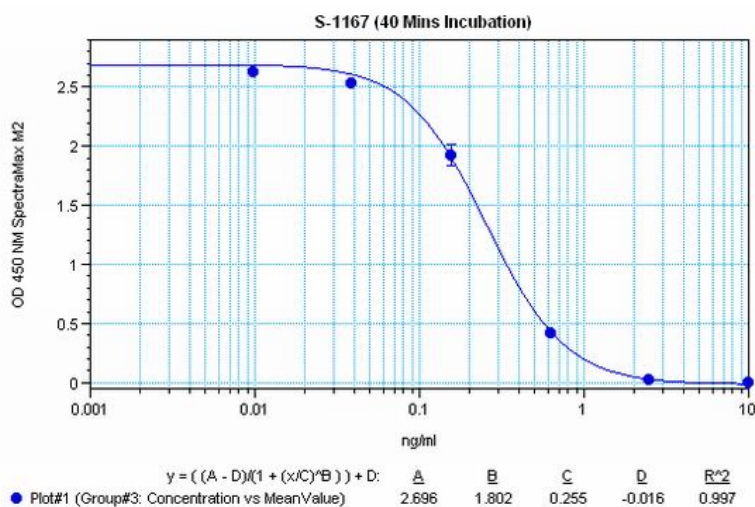
#### **TECHNICAL AND ANALYTICAL CHARACTERISTICS**

<b>Lot number:</b>	A18018
<b>Host species:</b>	Rabbit IgG
<b>Quantity:</b>	96 tests
<b>Format:</b>	Formulated for extracted samples (EIAH type).
<b>Shelf-life:</b>	One year from production date. Store refrigerated at 4° - 8°C.
<b>Applications:</b>	This ELISA has been validated with the included reagents. It is intended to be used with appropriately extracted samples (original protocol III, Std.Ab1hr.Bt). For research use only. Please see <a href="http://www.bma.ch">www.bma.ch</a> for protocols and general information.
<b>Range:</b>	0-10ng/ml
<b>Average IC50:</b>	0.39ng/ml
<b>Immunogen:</b>	Synthetic peptide H-Ser-Cys-Asn-Thr-Ala-Thr-Cys-Val-Thr-His-Arg-Leu-Ala-Gly-Leu-Leu-Ser-Arg-Ser-Gly-Gly-Val-Val-Lys-Asp-Asn-Phe-Val-Pro-Thr-Asn-Val-Gly-Ser-Glu-Ala-Phe-NH <sub>2</sub> , (Disulfide bond) coupled to carrier protein.

#### **Cross-Reactivity:**

<b>PEPTIDE:</b>	<b>%:</b>
$\alpha$ -CGRP (canine, mouse, rat)	100
$\alpha$ -CGRP (human)	14
$\beta$ -CGRP (rat)	23
$\beta$ -CGRP (human)	13
Amylin (rat)	0
Amylin (acid free) (human)	0
Calcitonin (rat)	<0.01
Somatostatin-14	0

Typical titration curve of  $\alpha$ -CGRP in a competitive ELISA with this antibody:



<b>Suggested Preparation of Standards</b>		
	ng/ml	Range: 0.01 to 10ng/ml
<b>Stock</b>	1000	
<b>S1</b>	10.00	Add 10 $\mu$ l Stock + 990 $\mu$ l diluent
<b>S2</b>	2.50	Add 200 $\mu$ l S1 + 600 $\mu$ l diluent
<b>S3</b>	0.63	Add 200 $\mu$ l S2 + 600 $\mu$ l diluent
<b>S4</b>	0.16	Add 200 $\mu$ l S3 + 600 $\mu$ l diluent
<b>S5</b>	0.04	Add 200 $\mu$ l S4 + 600 $\mu$ l diluent
<b>S6</b>	0.01	Add 200 $\mu$ l S5 + 600 $\mu$ l diluent
<b>S0</b>	0.00	500 $\mu$ l diluent

Related Products: T-4030: anti  $\alpha$ -CGRP (cn, ms, rt) diluted antiserum, host: rabbit  
T-4031: anti  $\alpha$ -CGRP (cn, ms, rt) purified IgG, host: rabbit  
T-4032: anti  $\alpha$ -CGRP (cn, ms, rt) neat antiserum, host: rabbit  
T-5053: anti  $\alpha$ -CGRP (cn, ms, rt) neat antiserum, host: guinea pig

---

This product contains Thimerosal as a preservative and is intended for laboratory use and research purposes only. Purchase of this product does not include authorization to use it in diagnostic or therapeutic applications.

S-1167

EIAH – cn, ms, rt

6.8.2020